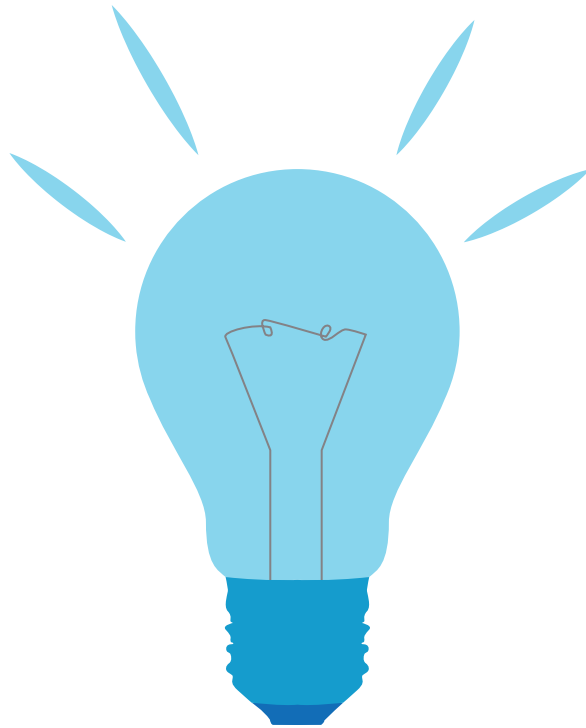




MAIN IDEAS & SUPPORTING DETAILS

STATED MAIN IDEAS



IN THIS WORKSHOP YOU WILL LEARN:

- What is a main idea
- What are supporting details
- How to locate keywords
- How to identify stated main ideas & supporting details

PLEASE PROVIDE YOUR STUDENT ID CARD!

LIMITED SPACE - You must sign up ahead of time in the Reading Success Center for this workshop or any other workshop.

FRIDAY
SEPTEMBER 29, 2017
12:00 P.M. - 1:30 P.M.

CONTACT US

SCHAUERMAN LIBRARY
EAST BASEMENT E36
310-660-3593, EX. 6729

<http://bit.ly/reading-success-center>



El Camino College
16007 Crenshaw Blvd.,
Torrance, CA 90506
1-866-ELCAMINO
www.elcamino.edu

**STUDENT
EQUITY
PROGRAM**

The El Camino Community College District is committed to providing equal opportunity in which no person is subjected to discrimination on the basis of national origin, religion, age, sex (including sexual harassment), race, color, gender, physical or mental disability, or retaliation.