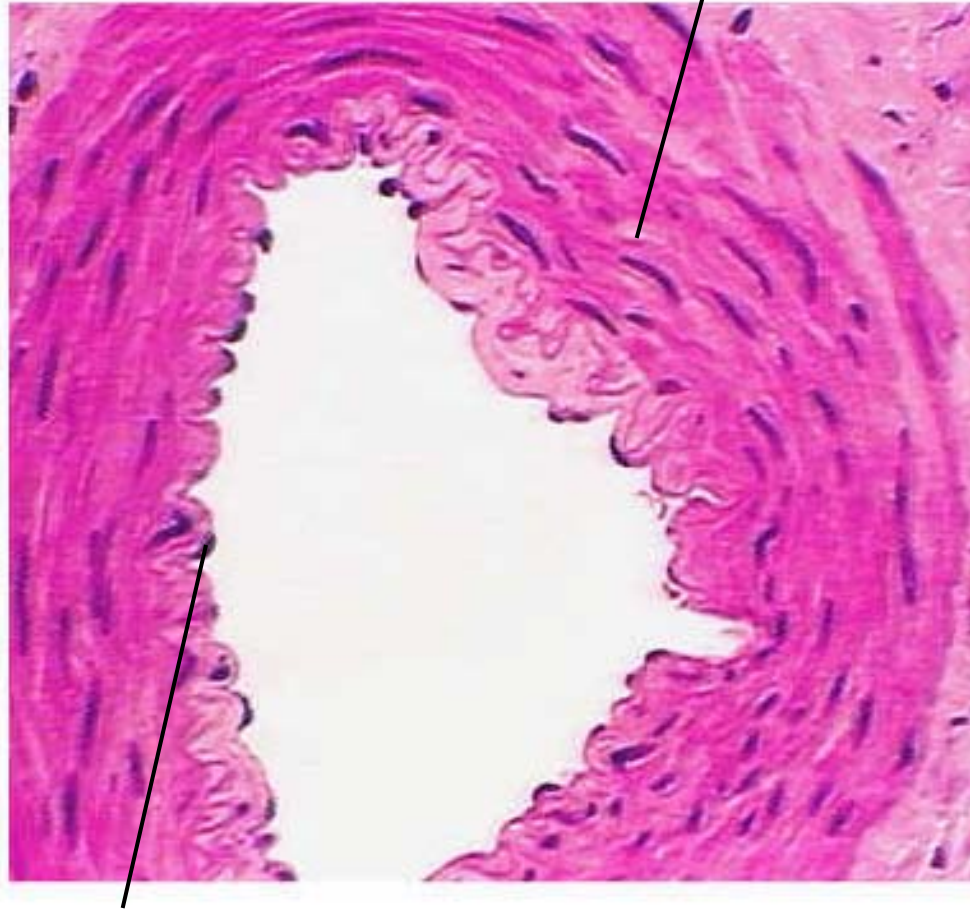


Tissue Histology

Simple squamous epithelium, small muscular artery (80X)

Smooth muscle



Simple squamous epithelium

Simple cuboidal epithelium, kidney (160X)

Microvilli

Basement membrane

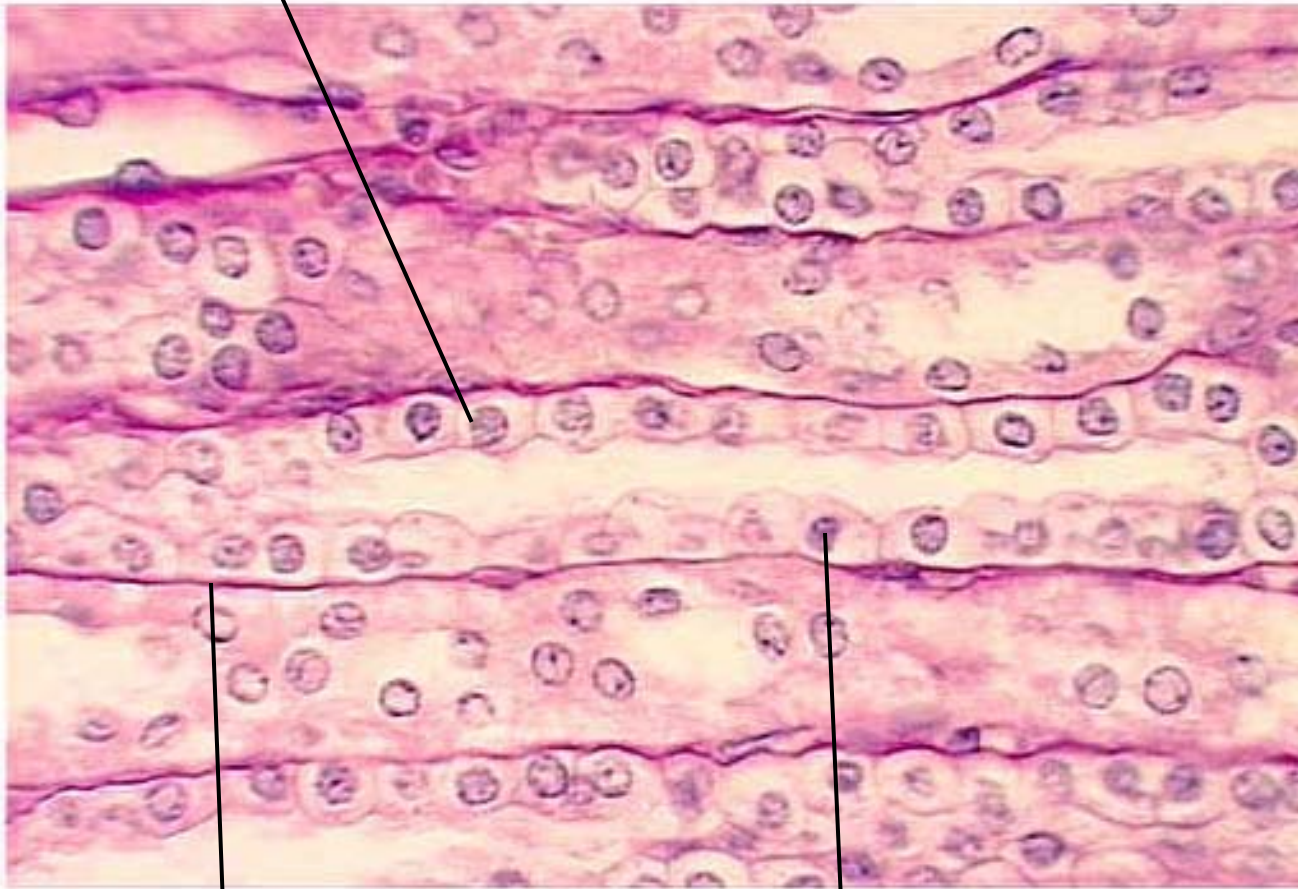


Nucleus

Proximal convoluted tubule

Simple cuboidal epithelium, kidney (160X)

Simple cuboidal cell



Basement membrane

Nuclei

Simple columnar epithelium, small intestine (160X)

Simple columnar cell

Goblet cell

Microvilli



Pseudostratified columnar epithelium, trachea (160X)

Cilia

Pseudostratified columnar cells

Goblet cells



Lamina propria

Transitional epithelium, urinary bladder (160X)

Round apical cells

Nuclei

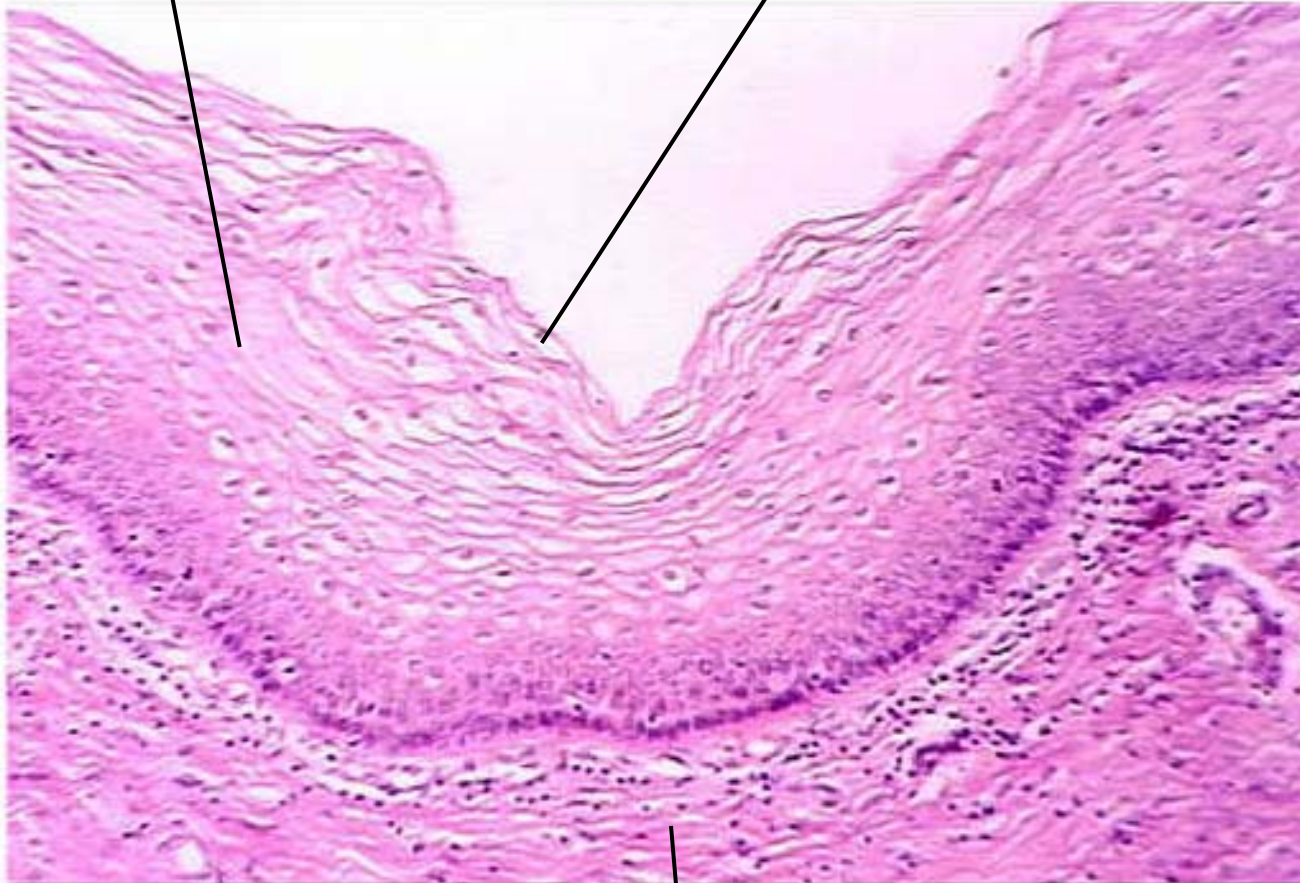


Basement membrane

Stratified squamous epithelium, vagina (40X)

Stratified squamous epithelium

Squamous cell

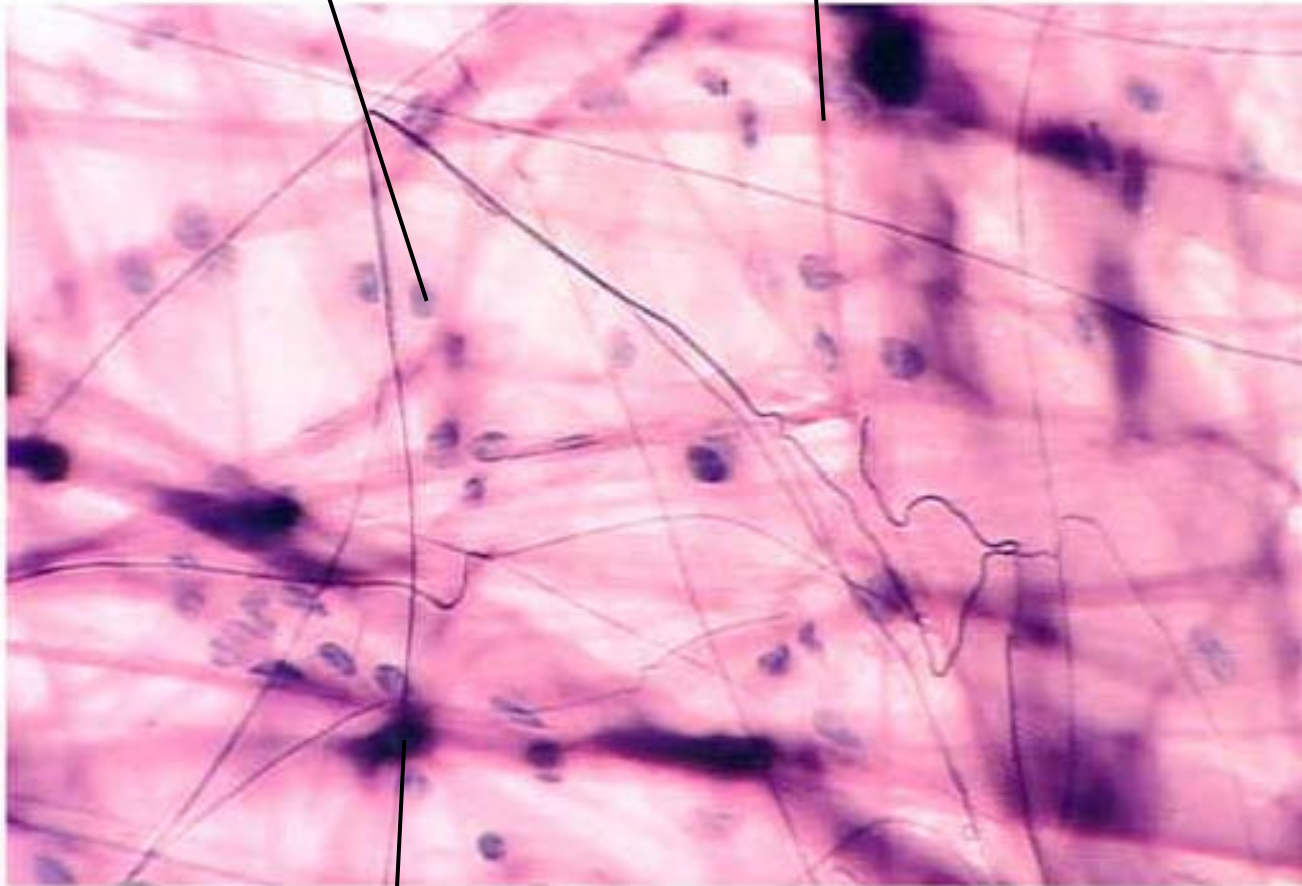


Lamina propria

Areolar connective tissue (80X)

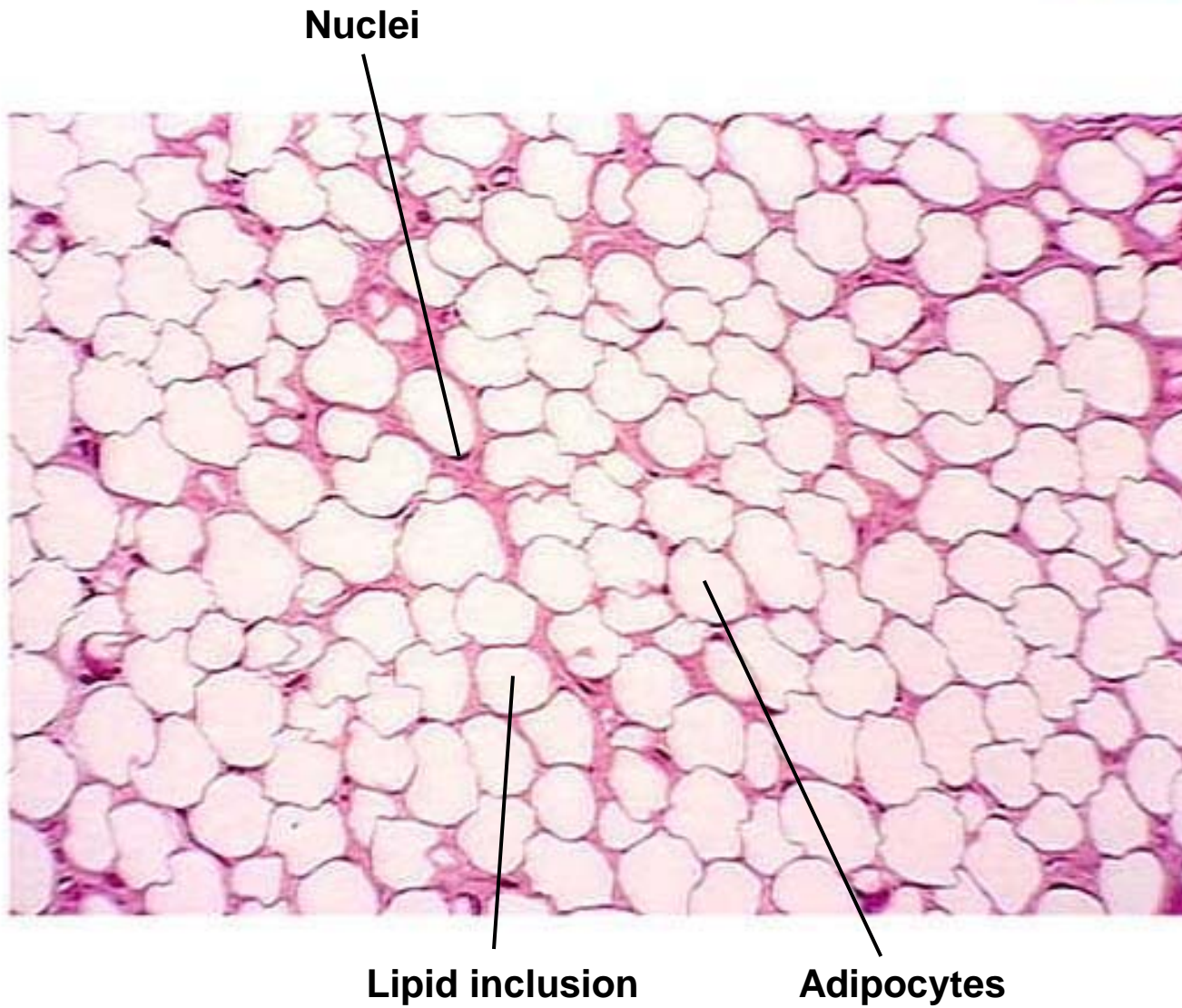
**Fibroblast
nucleus**

Collagen fibers

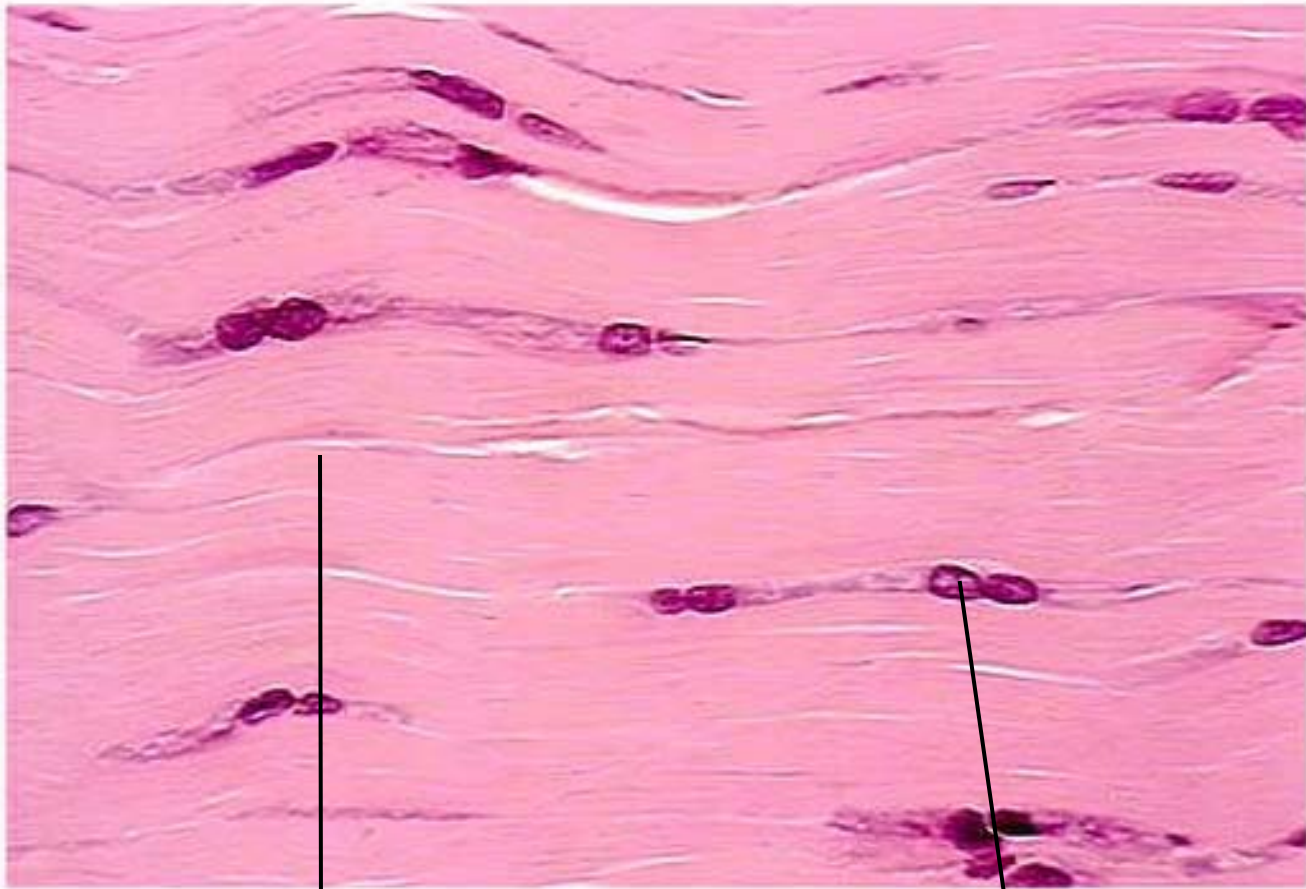


Elastic fibers

Adipose tissue (40X)



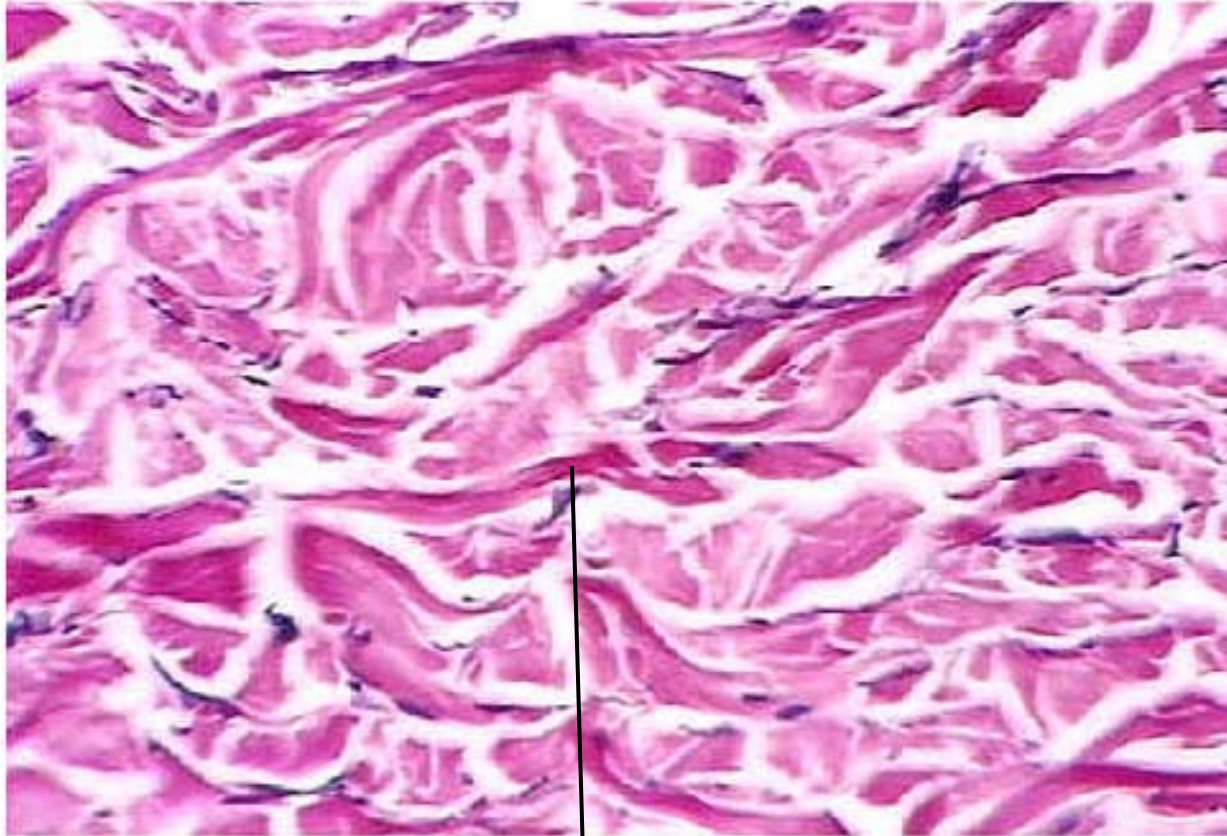
Dense regular connective tissue (160X)



Collagen fibers

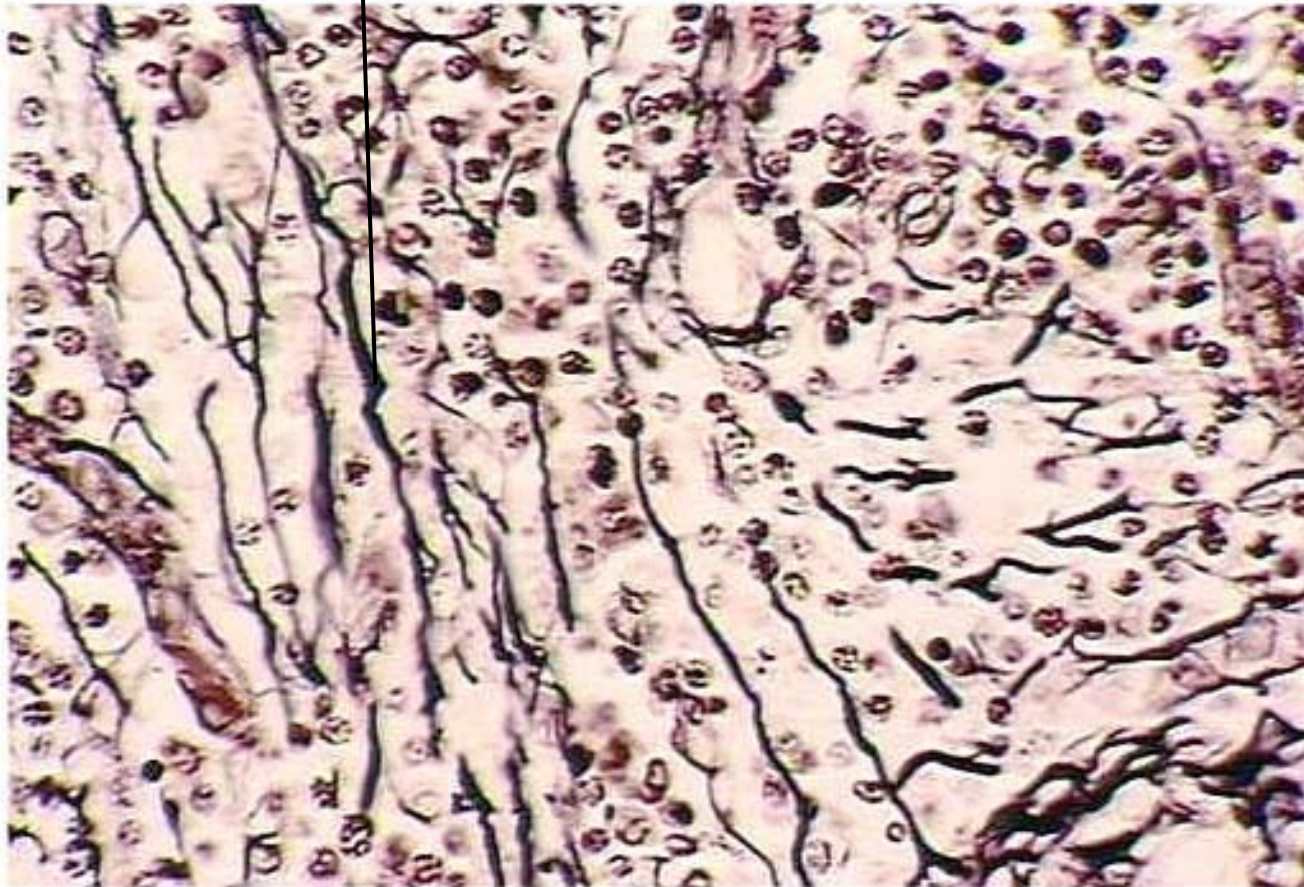
Fibroblast nuclei

Dense irregular connective tissue, dermis (160X)

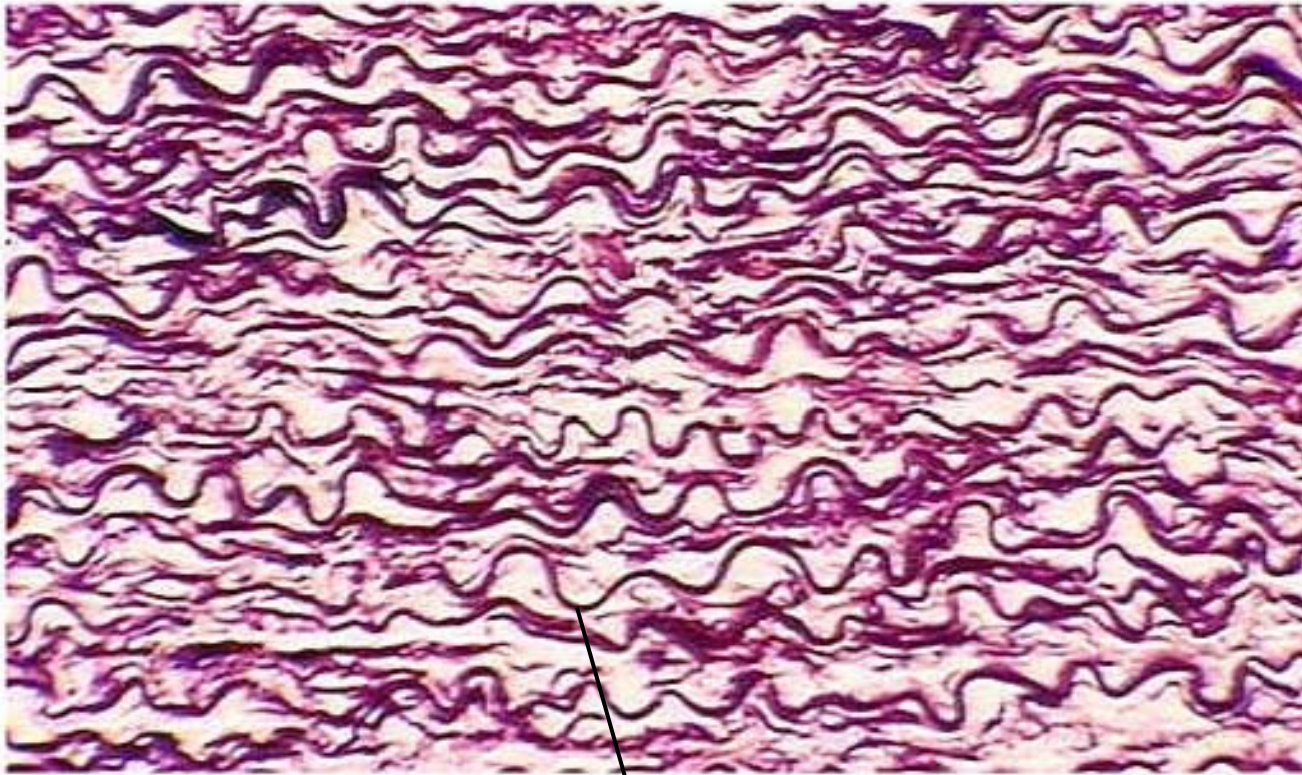


Collagen fibers

Reticular fibers



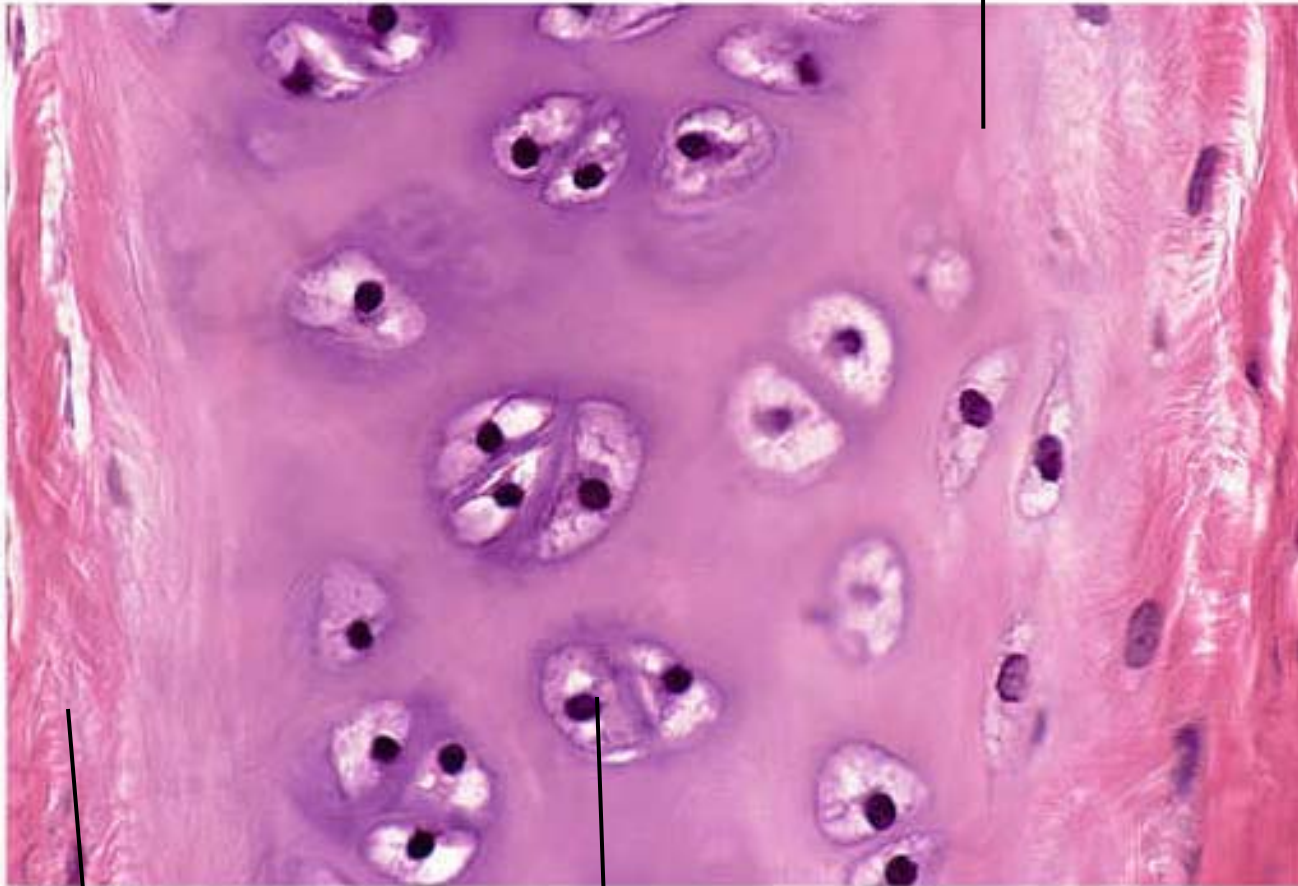
Elastic connective tissue, aorta (80X)



Elastic fibers

Hyaline cartilage (160X)

Hyaline cartilage



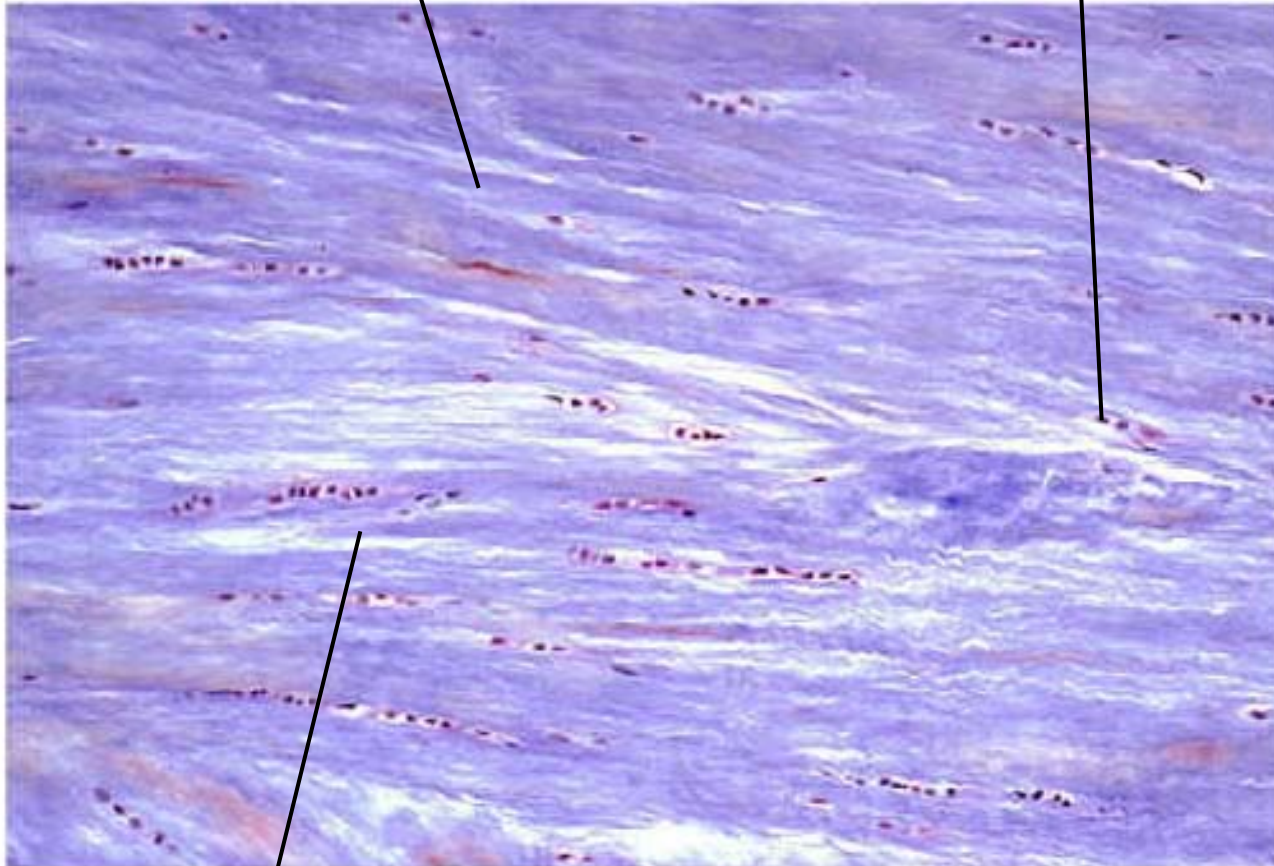
Perichondrium

Chondrocytes in lacunae

Fibrocartilage (40X)

Collagen fibers

Chondrocytes in lacunae

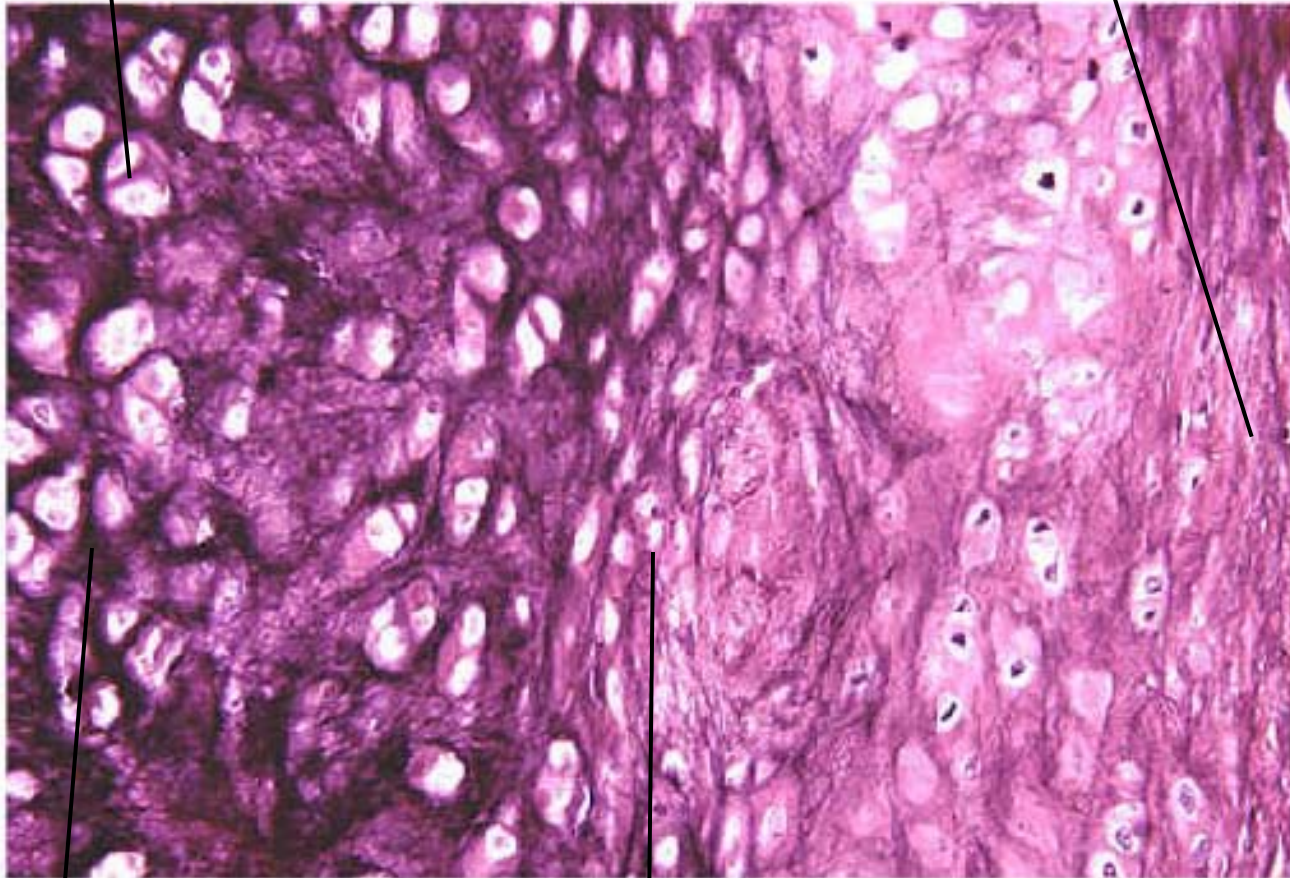


Fibrocartilage

Elastic cartilage (80X)

Chondrocytes in lacunae

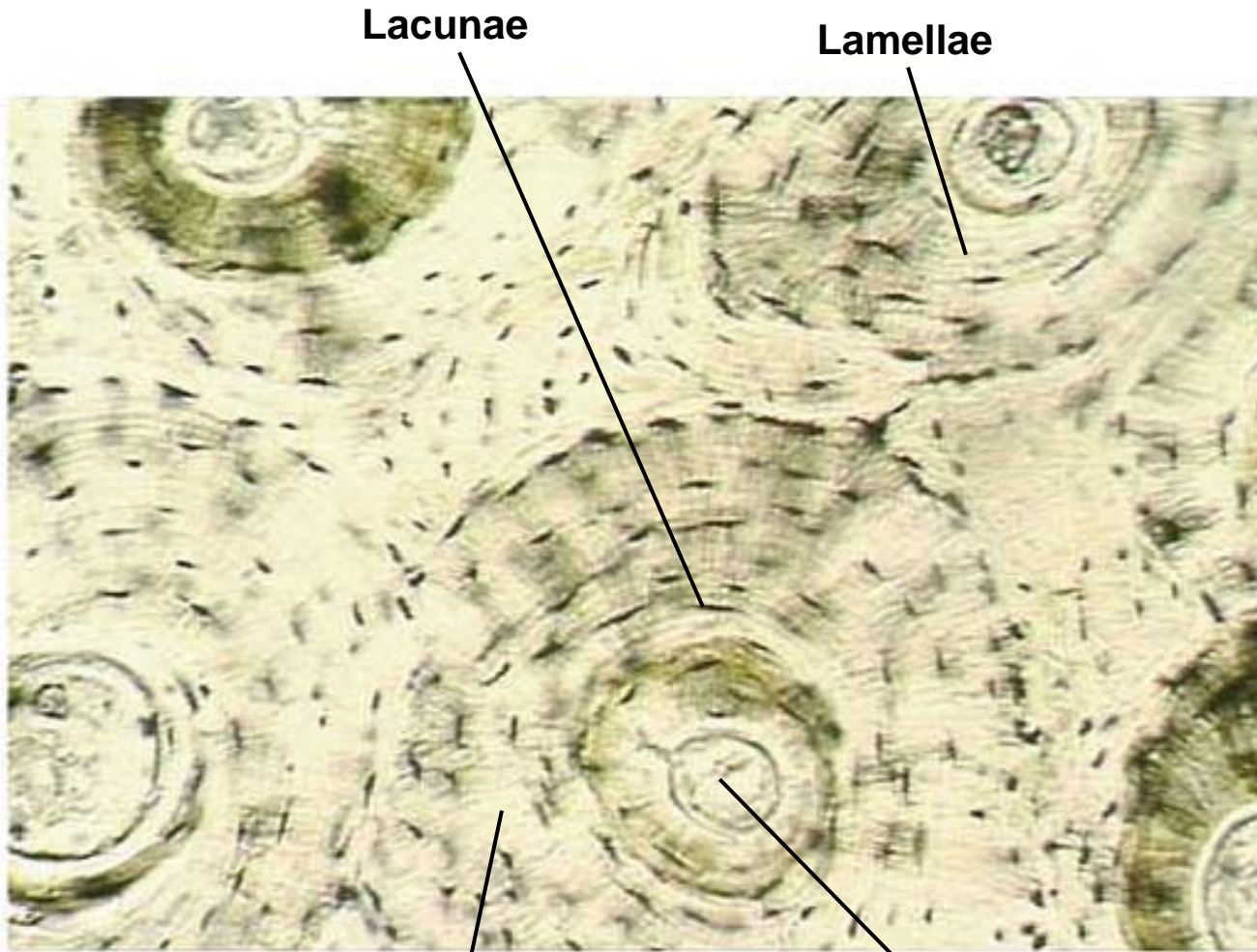
Perichondrium



Elastic fibers

Elastic cartilage

Compact bone (40X)



Lacunae

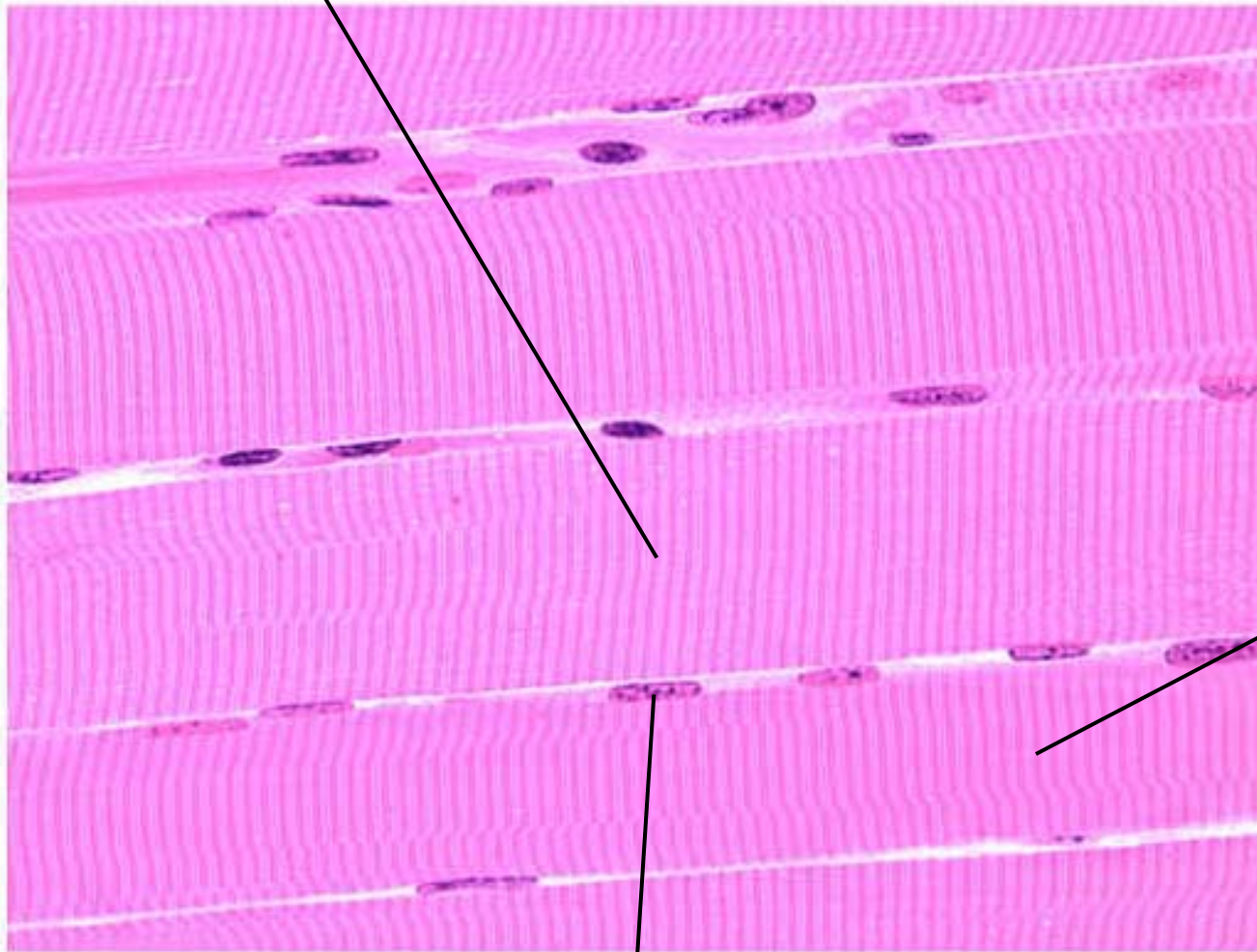
Lamellae

Central (Haversian) canal

Osteons (Haversian system)

Skeletal muscle tissue (50X)

Skeletal muscle fiber (cell)



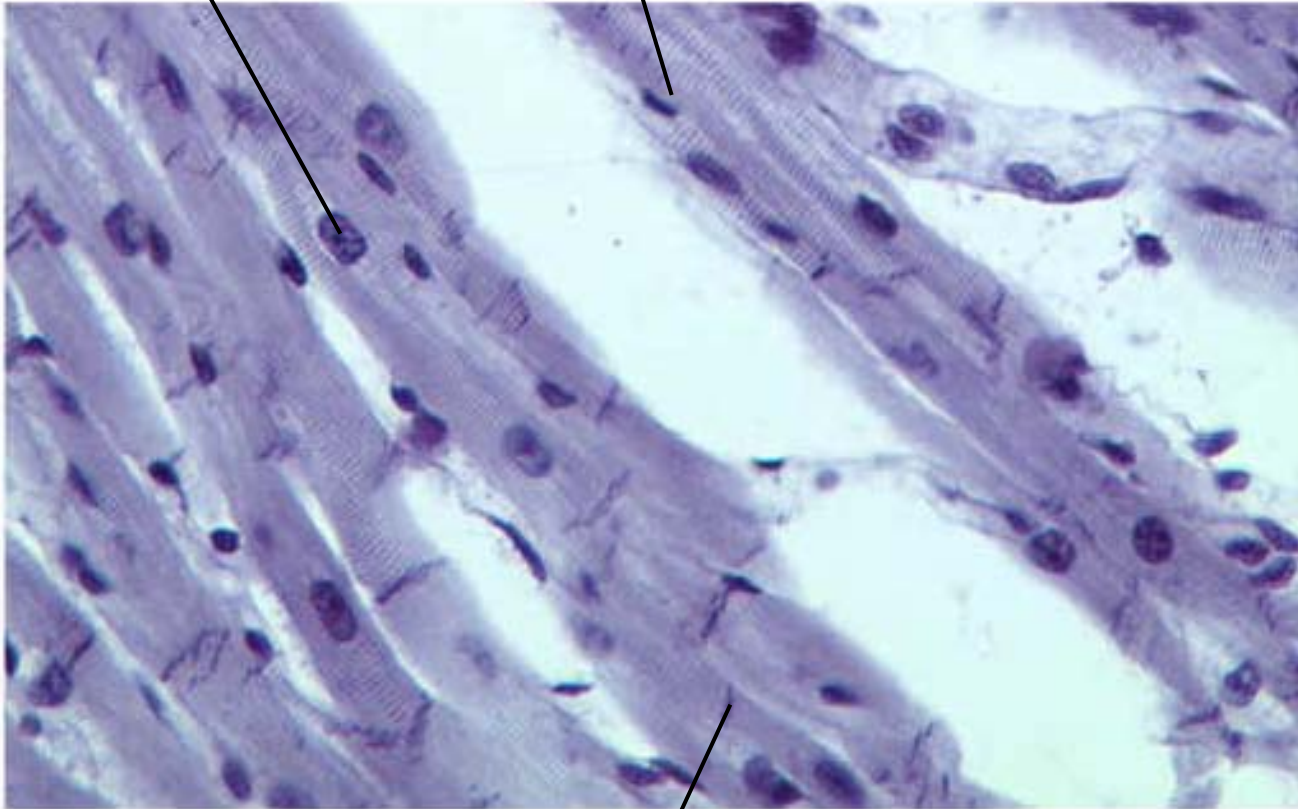
Sarcomere

Nuclei

Cardiac muscle tissue (40X)

Nucleus

Sarcomeres



Intercalated disc

Smooth muscle tissue (160X)

Nuclei

Smooth muscle fiber (cell)

