

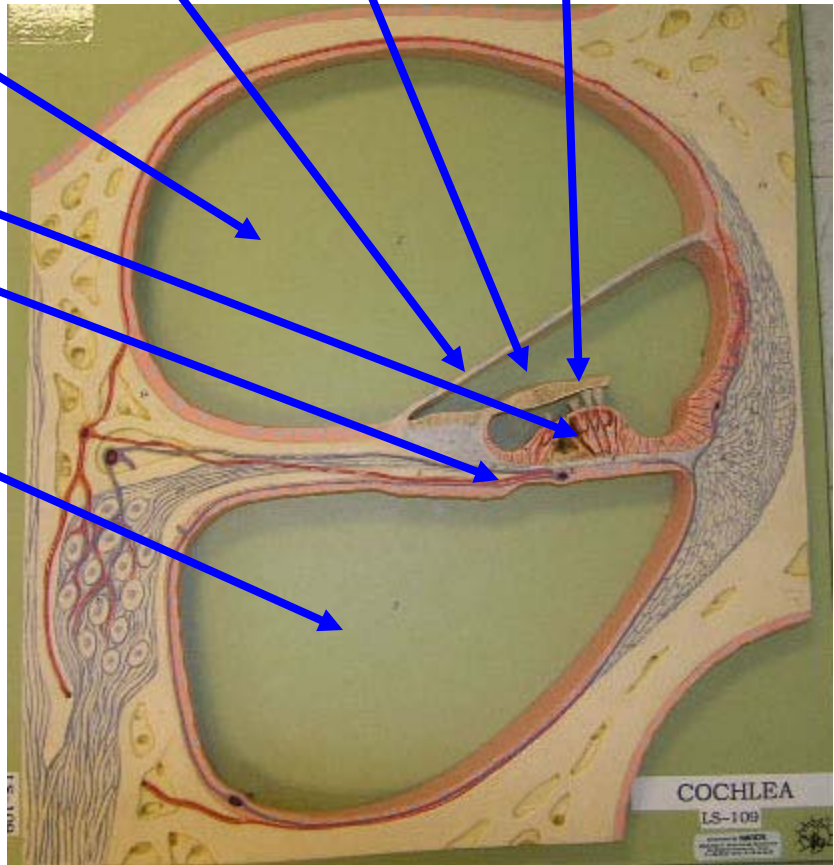
Ear 3 - Cochlea TS Labeled

VESTIBULAR DUCT VESTIBULAR MEMBRANE COCHLEAR DUCT TECTORIAL MEMBRANE

SPIRAL ORGAN OF CORTI

BASILAR MEMBRANE

TYMPANIC DUCT



Oval window opens into vestibular duct (filled with perilymph). Round window is present at the end of tympanic duct (filled with perilymph). Cochlear duct, filled with Endolymph, is present between vestibular and tympanic duct. At the end of cochlear duct a narrow passage helicotrema links vestibular and tympanic ducts.