

Models of Brain

And spinal cord

Superior sagittal sinus

Cingulate gyrus

Genu – Corpus callosum

Optic Chiasm

Pituitary Gland

Pons

Septum Pellucidum

Fornix

Infundibulum

Pineal Gland

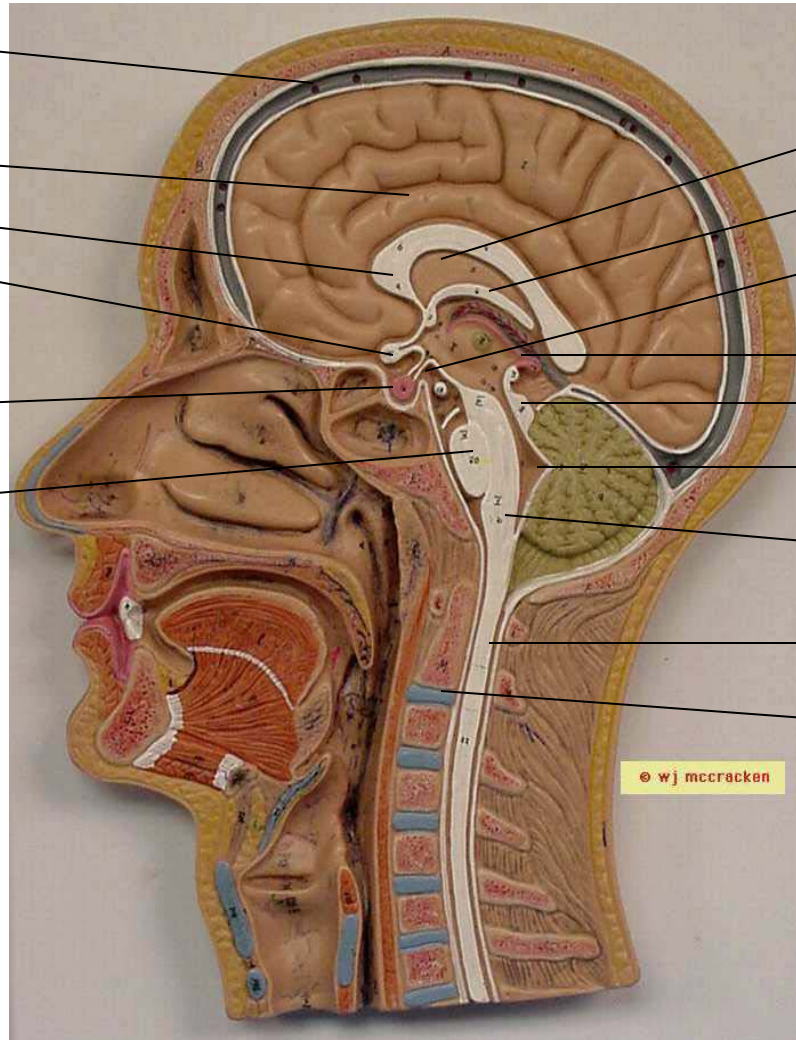
Corpora Quadrigemina

4th ventricle

Medulla

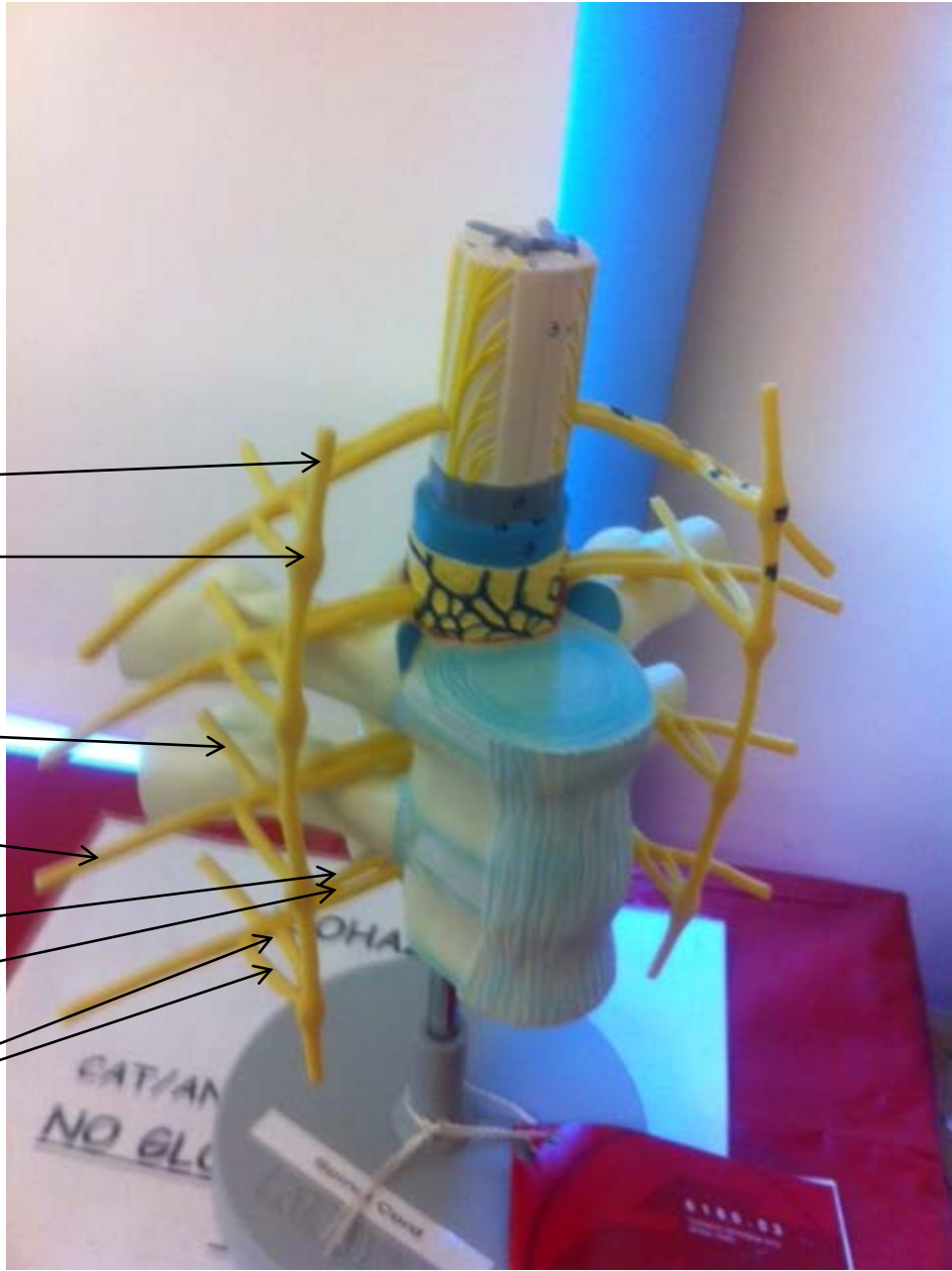
Spinal cord

Intervertebral disc



© wj mcCracken

Sympathetic cord
Sympathetic ganglion
Dorsal Ramus
Ventral Ramus
Dorsal root
Ventral root
Communicating rami



Spinal Cord

Dorsal root ganglion

Nucleus Pulposus

Annulus Fibrosus

Body of vertebra

