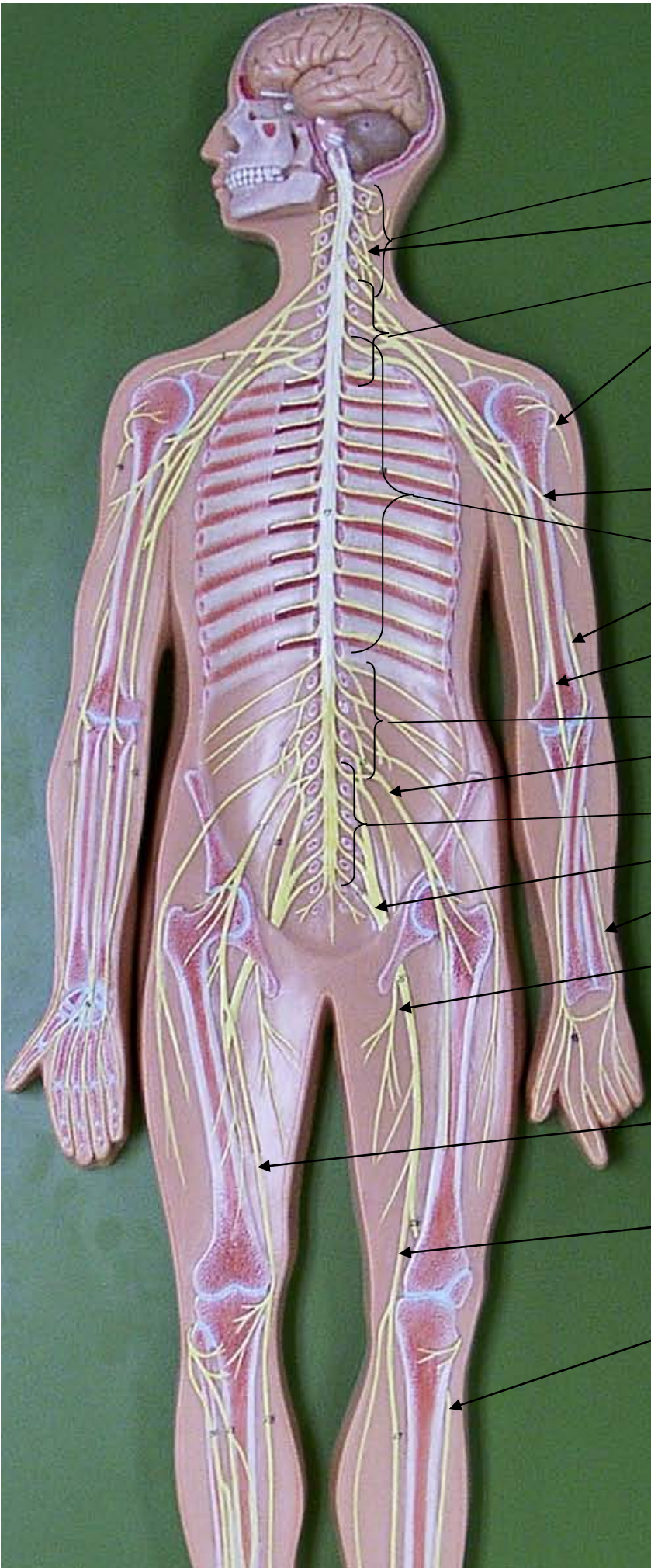


## Spinal Nerves and Plexuses Model



Cervical Plexus (C<sub>1</sub> – C<sub>5</sub>)

Phrenic Nerve

Brachial Plexus (C<sub>5</sub> – T<sub>1</sub>)

Axillary Nerve

Musculocutaneous nerve

Costal Spinal Nerves (T<sub>1</sub> – T<sub>12</sub>)

Radial Nerve

Median Nerve

Lumbar Plexus (L<sub>1</sub> – L<sub>4</sub>)

Femoral Nerve

Sacral Plexus (L<sub>4</sub> – S<sub>4</sub>)

Sciatic Nerve

Ulnar Nerve

Obturator Nerve

Saphenous Nerve

Common Fibular (peroneal) nerve

Tibial Nerve