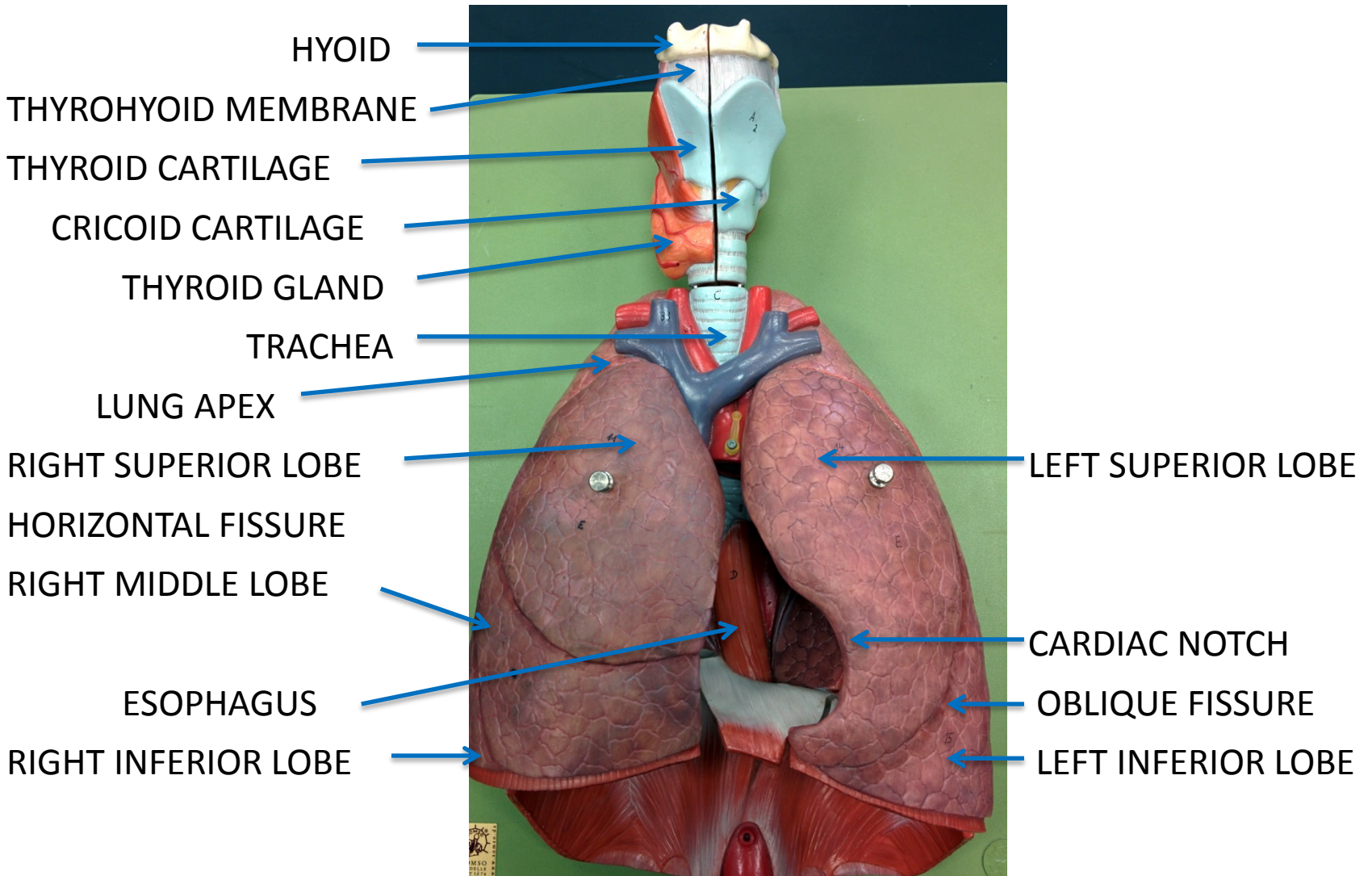
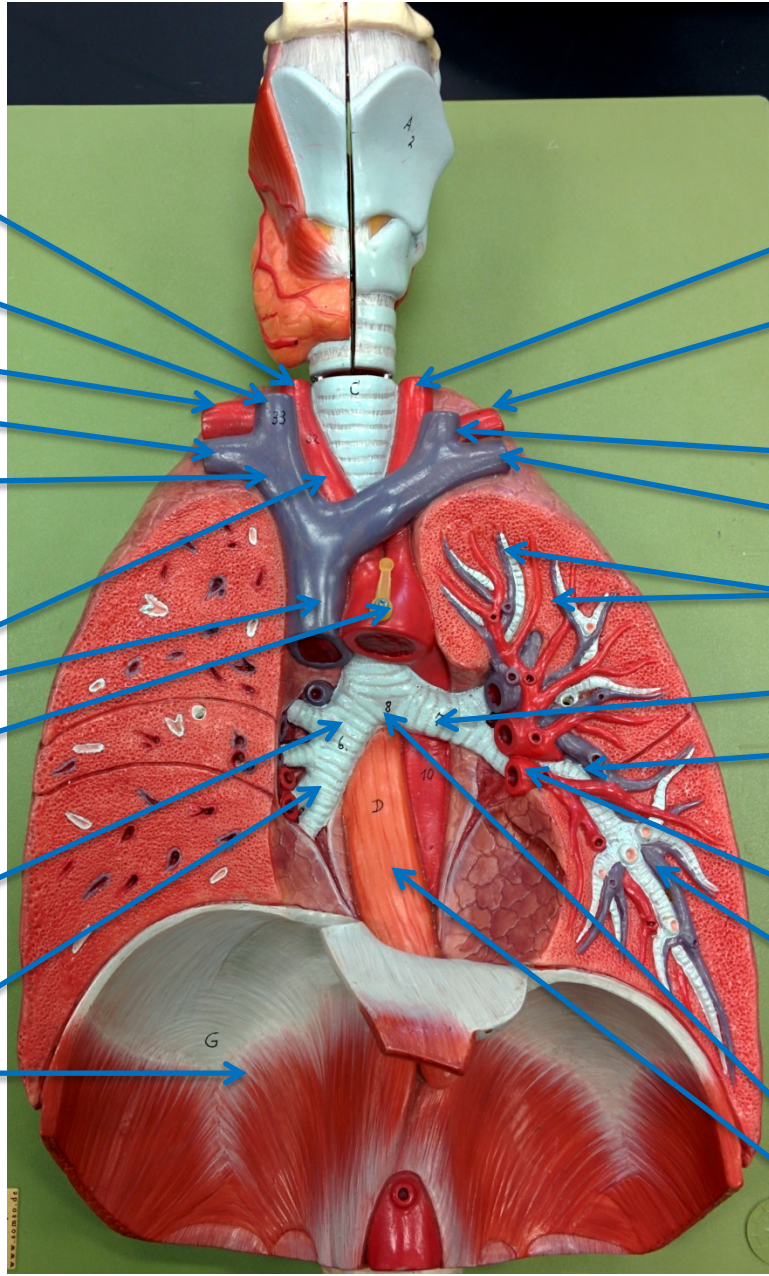


RESPIRATORY SYSTEM PLAQUE 1



RESPIRATORY SYSTEM PLAQUE 2

- R. COMMON CAROTID A.
- R. INTERNAL JUGULAR V.
- R. SUBCLAVIAN A.
- R. SUBCLAVIAN V.
- R. BRACHIOCEPHALIC V.
- BRACHIOCEPHALIC TRUNK
- SUPERIOR VENA CAVA
- AORTA
- R. MAIN BRONCHUS
- R. LOBAR BRONCHUS
- DIAPHRAGM



- L. COMMON CAROTID A.
- L. SUBCLAVIAN A.
- L. INTERNAL JUGULAR A.
- L. SUBCLAVIAN A.
- SEGMENTAL BRONCHI
- L. MAIN BRONCHUS
- L. LOBAR BRONCHUS
- L. PULMONARY V.
- LEFT PULMONARY A.
- CARINA
- ESOPHAGUS