



Economics Department Meeting

Wednesday, Sept. 28, 2022

Economics Department

Agenda

I) Reports

- a) Cheryl Kroll, Counseling
- b) David Reed, BSS Student Success Team – ECC Connect

II) Scheduling, Enrollment, and Degrees

III) Department Business

- a) SLOs and Assessment
- b) Curriculum

IV) New Building - Offices

Counseling Updates for Department Meetings: Fall 2022

Transfer Center Events:

<https://www.elcamino.edu/academics/transfer-center/events-and-workshops/index.aspx>.

On Campus University Fair: If your students could not attend today, please note that students may also book appointments with a wide variety of college/university representatives on our Transfer Center website as well.

September is TAG month and the Transfer Center will host TAG workshops all month, so please encourage students to sign up on the Transfer Center website if applicable.

CSU/UC Application workshops will commence on October 1st. Both in person and virtual options will be available. Students will sign up on the Transfer Center website.

Career Center Events:

<https://www.elcamino.edu/support/careers/index.aspx>

New resources have been added to this website and students can now access job opportunities here as well.

Scheduling Counseling Appointments:

Students are now able to book appointments via this link: <https://www.elcamino.edu/support/counseling/appointments.aspx>

My office is still temporarily located in MBAH 453 until we move into our new space.

Meta Major Outreach

In addition to our gateway courses, we will be reaching out to all new BSS meta major students for educational planning this semester.

We will also begin to host "What Can I Do With a Major In?" workshops for our majors, beginning with psychology and sociology this semester.

We likewise participated in the Student Support Expo on Monday, September 19th and were able to provide students with additional meta major resources at that event.

ECC Connect Boosts Fall-to-Spring Persistence

Fall to Spring Persistence	Fall 2018	Fall 2019	Fall 2020	Fall 2021
Connect Student	82%	80%	78%	71%
In Support Program	88%	85%	85%	79%
Not in Support Program	71%	73%	71%	64%
American Indian	67%	92%	75%	78%
Asian	86%	84%	84%	75%
Black/African American	73%	73%	71%	65%
Hawaiian/Pacific Islander	84%	65%	73%	61%
Hispanic	83%	80%	77%	70%
Two or More Races	89%	79%	78%	75%
Unknown	67%	67%	73%	63%
White	83%	85%	80%	73%
Non-Connect Student	71%	65%	63%	54%
In Support Program	80%	73%	72%	64%
Not in Support Program	67%	62%	60%	50%
American Indian	77%	44%	65%	36%
Asian	78%	71%	67%	60%
Black or African American	61%	59%	58%	48%
Hawaiian/Pacific Islander	71%	60%	51%	58%
Hispanic	71%	64%	62%	53%
Two or More Races	76%	71%	66%	53%
Unknown	60%	53%	60%	54%
White	75%	67%	67%	56%

Recent data indicates that ECC Connect use by faculty has a positive effect on fall-to-spring persistence (11-16%).

In a time of decreased enrollment numbers, ECC Connect use by faculty is more important than ever!

Summer 2022 Sections

Course	Summer 2020 (9 sections)	Summer 2021 (10 sections)	Summer 2022 (10 sections)
100	0	1 (1 dual enrollment)	2 (2 dual enrollment)
101	7	6	6
102	2	3	2

Fall 2022 Sections

Course	Fall 2020 (23 sections)	Fall 2021 (20 sections)	Fall 2022 (23 sections)
100	1 (1 dual en.)	2 (1 dual en.)	2 (1 dual en.)
101	13	11	13
101H	1	1	1
102	8	6	7

Fall v. Spring 2022 Schedule & Enrollment

(Week 3 Snapshot)

Fall 2022

Total Sections: 23 sections
Seats Filled: 858
Overall Fill Rate: 87% fill rate

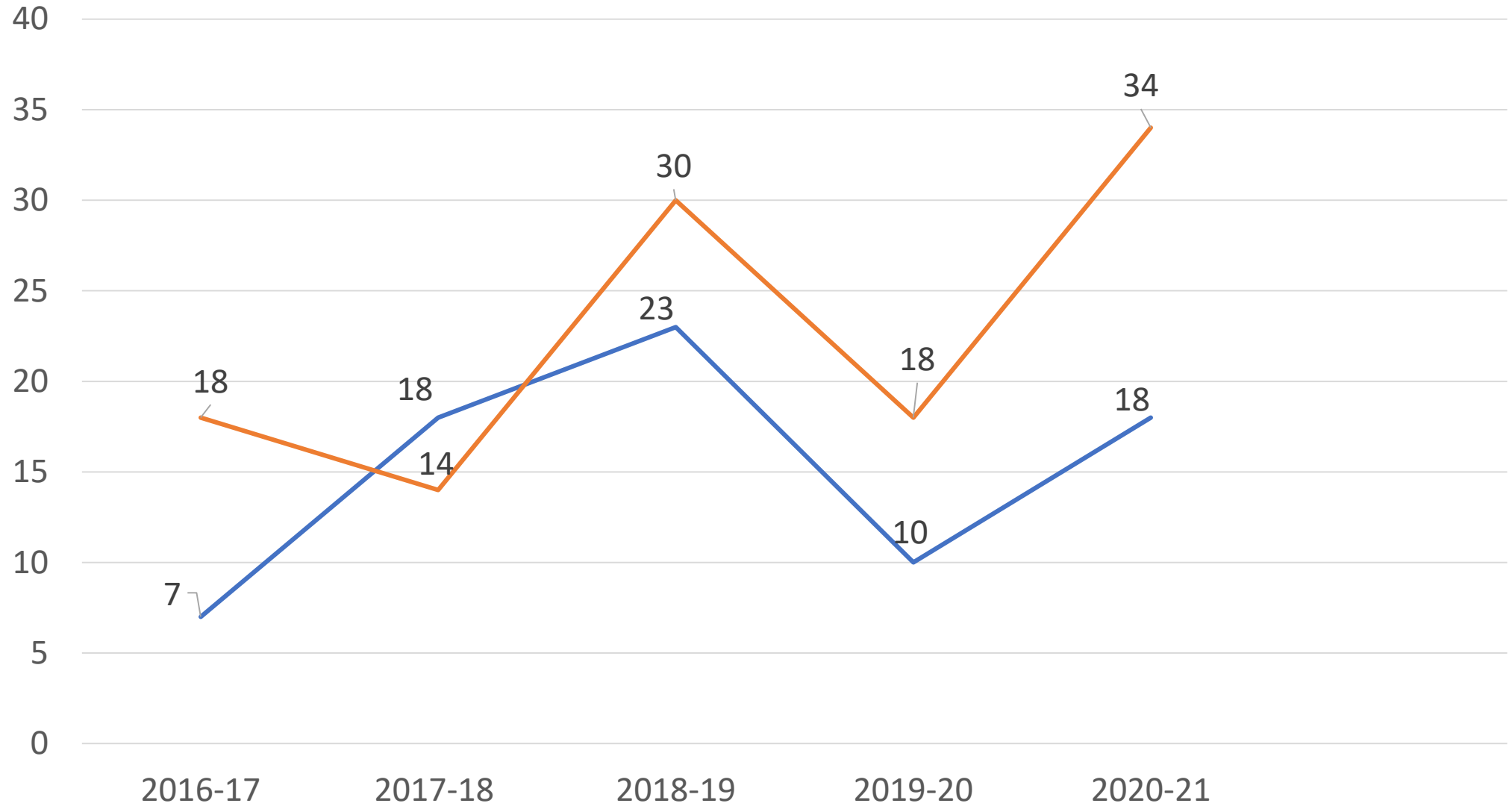
Online: 15 sections, 96% fill rate
On Campus: 4 sections, 69% fill
Hybrid: 3 sections, 76% fill rate
Dual En: 1 section, 30% fill rate

Spring 2022

Total Sections: 22 sections
Seats Filled: 758
Overall Fill Rate: 77 % fill rate

Online: 14 sections, 91% fill rate
On Campus: 4 sections, 40% fill
Hybrid: 3 sections, 56% fill rate
Dual En: 1 section, 90% fill rate

ECONOMICS DEGREES



— AA — AAT

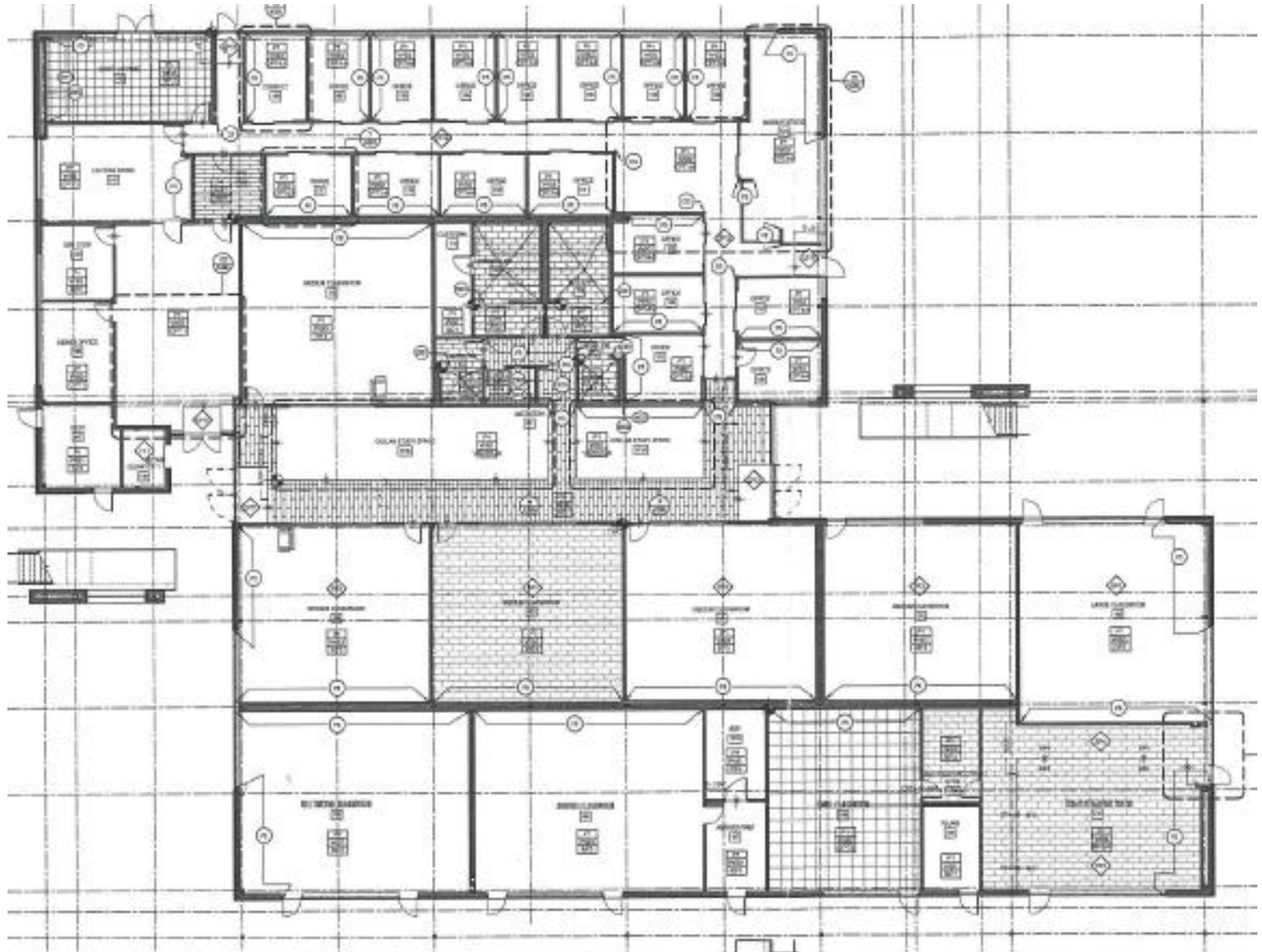
PLOs/SLOs and Curriculum

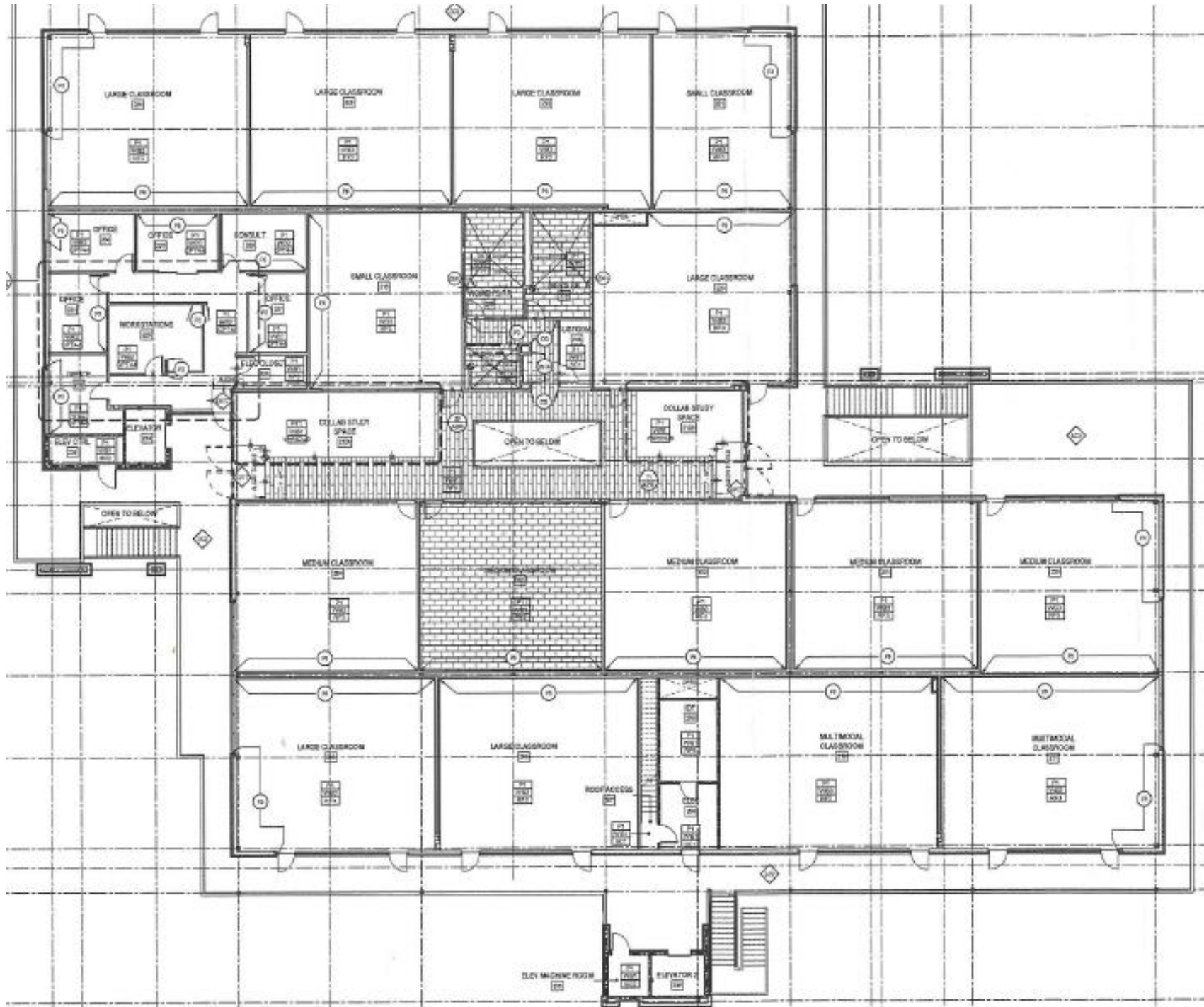
SPRING 2022 ASSESSMENTS

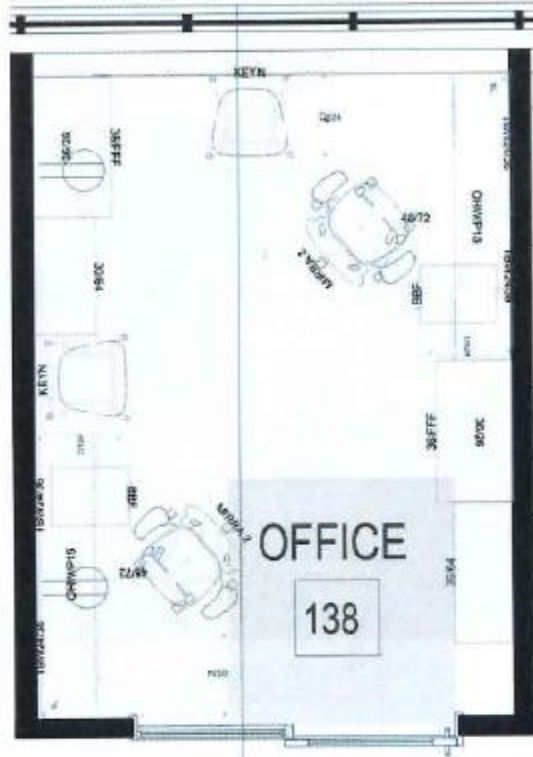
- Completed?
- ECON 1 SLO #1
- ECON 2 SLO #1

CURRICULUM

- None!







FACULTY OFFICE TYP1

- (2) CANVAS FREESTANDING EXTENDED CORNER SURFACES
- (2) BBF PEDESTAL
- (2) OVERHEADS WITH SLIDING DOORS
- (2) 5H OPEN BOOKCASES
- (2) 5H HIGH LATERAL FILE WITH OPEN BOOKCASE UNITS
- (2) TASK CHAIRS
- (2) GUEST CHAIRS



Client Signature _____ Date _____

Note: Your approval is necessary for our order process to begin. Your signature here indicates that all fabrics and finishes are approved as shown. Fabrics and finishes are displayed for reference only and will vary by monitor and printer from the actual material color. Selections have been made with a physical sample or swatch for true color and detail.

05/06/2022

