



Human Development
Department Meeting

Tuesday, April 25, 2023

Human Development Department

Reports and Announcements

Spring Section Count 2020-23

Class	Spring 2020 (27 sections)	Spring 2021 (30 sections)	Spring 2022 (27 sections)	Spring 2023 (33 Sections)
101	4	7	7	7
105	6	7	7	9
107	0	0	1	1
110	10	12	9	11
110H	1	1	1	1
115	6	3	2	4

Enrollment and Modality

Spring 2022

Total Sections – 27 sections

Seats Filled – 495

Overall Fill Rate – 72% fill rate

Online – 14 sections, 80% fill rate

On Campus – 6 sections, 55% fill

Hybrid – 2 sections, 63% fill rate

Dual Enrollment – 4 sections

Fall 2022

Total Sections – 32 sections

Seats Filled – 789

Overall Fill Rate – 82% fill rate

Online – 21 sections, 85% fill rate

On Campus – 7 sections, 84% fill rate

Hybrid – 3 sections, 82% fill rate

Dual Enrollment – 4 sections

Spring 2023

Total Sections – 33 sections

Seats Filled – 689

Overall Fill Rate – 70% fill rate

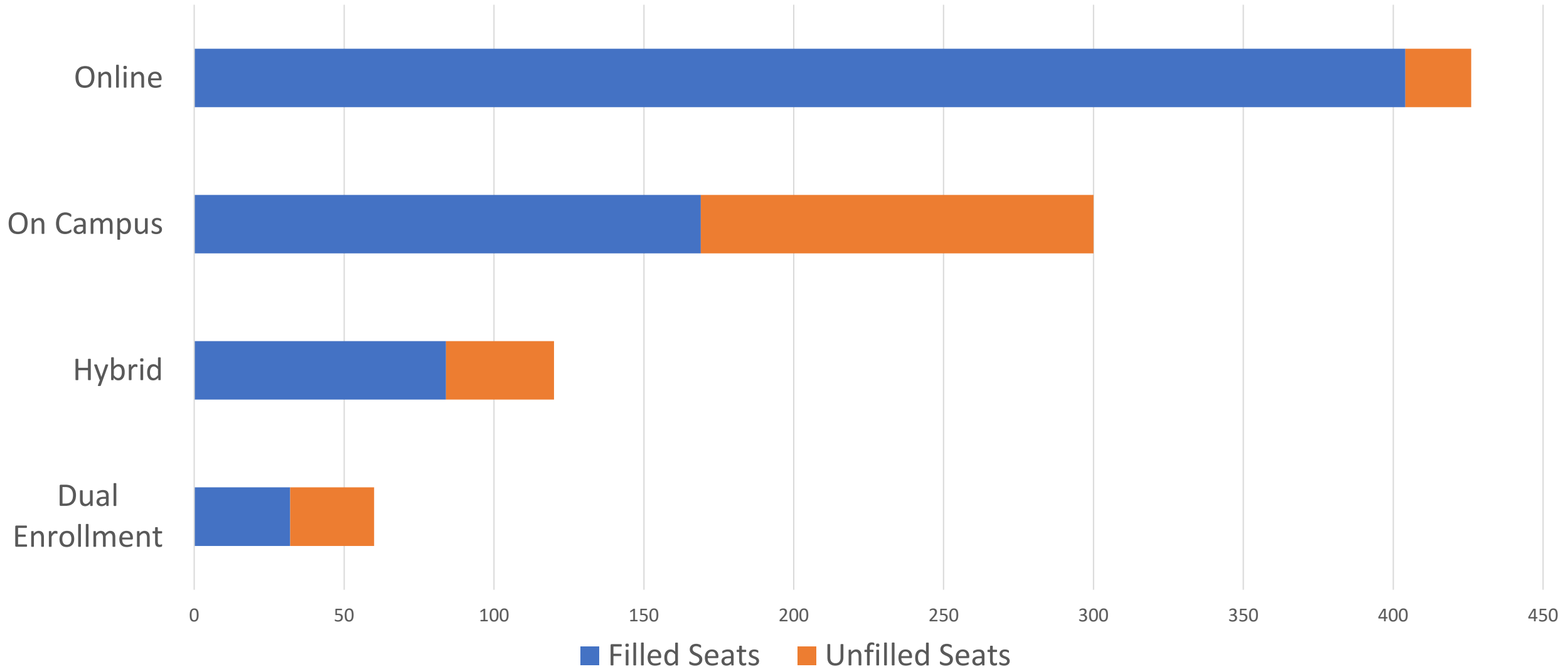
Online – 17 sections, 79% fill rate

On Campus – 10 sections, 56% fill

Hybrid – 4 sections, 70% fill rate

Dual En – 2 sections, 53% fill

Spring 2023 Enrollment – Seats Filled and Unfilled



Fall 2023 Scheduling

Scheduling Priority: Improve fill rates while maximizing student access to general education and major's courses in a strategically selected variety of modalities that reflect enrollment patterns and shifting student demand since the return to campus.

Goals/Factors

1. Strategically schedule fewer on campus sections, so we don't have multiple sections of a course with very low enrollment yet we still maintain a variety of on campus options for students (Spring 2023 BSS on campus fill rate 54%).
2. Maintain online sections (Spring 2023 BSS online fill rate 87%).
3. Avoid scheduling overlapping sections of a course or courses required for a major.
4. Modest demand for on campus and hybrid classes will support the expectation that faculty be teaching on campus 2 days a week in Fall 2023. In Spring 2024, it is possible that will increase to 3 instructional days a week on campus.
5. All classes must comply with the block schedule.



Program Collaborations: Spring 2022

Spring 2023 Collaborations

- Dual Enrollment
 - Loyde (101,105)
 - TUSD Early College (2 sections of 110 taught by HS Instructor)
- International Student Program (101)
- Student Resource Center (110)
- Honors Transfer Program (110H)
- STEM Contextualization (101)
- Transfer Center (107)

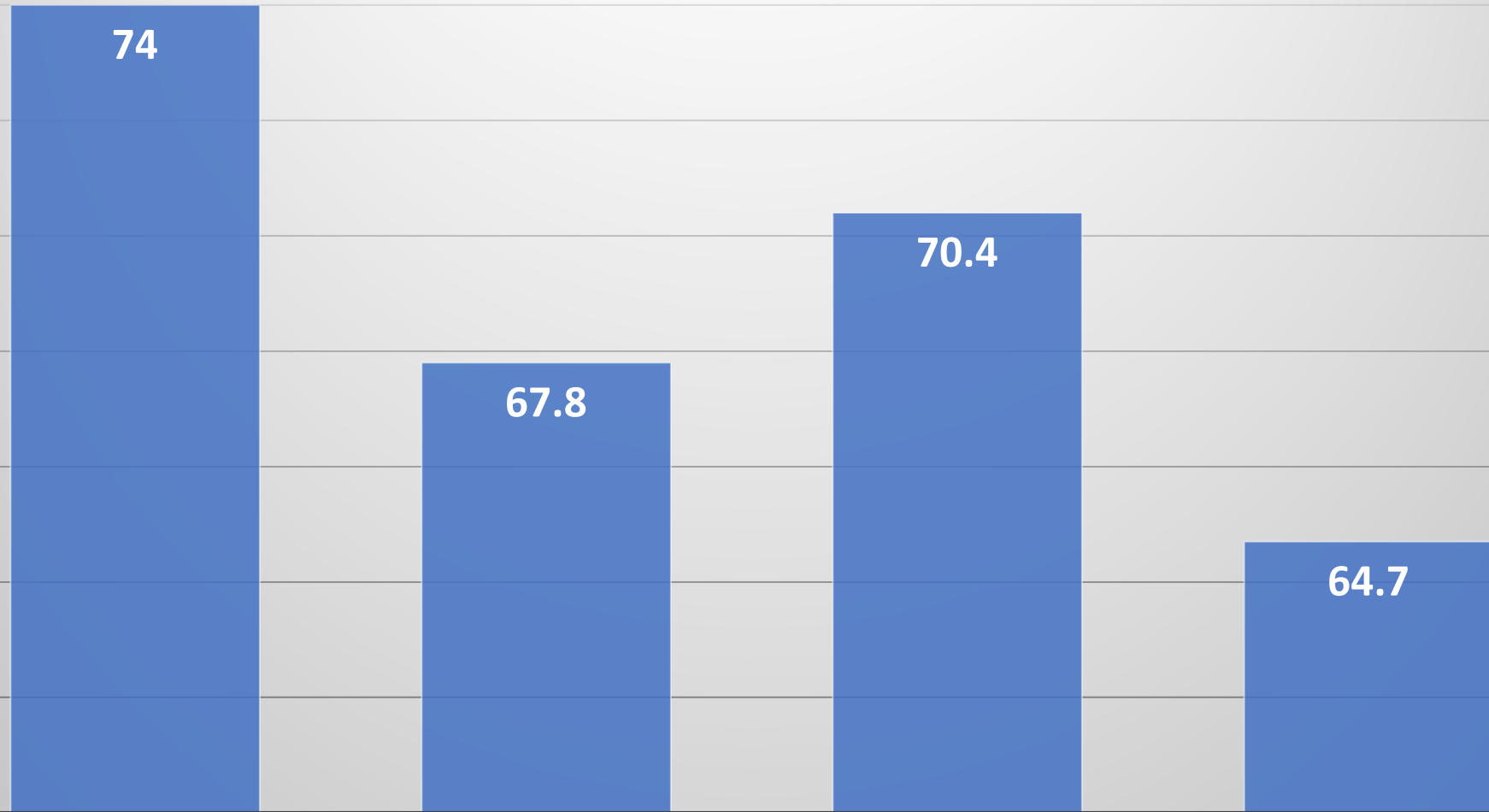
Additional Ongoing Fall Collaborations

- Puente
- Umoja

Under Development

- Non-credit offering of NDEV 105 with South Bay Adult School this summer.

Success – Human Development Fall 2019-2022



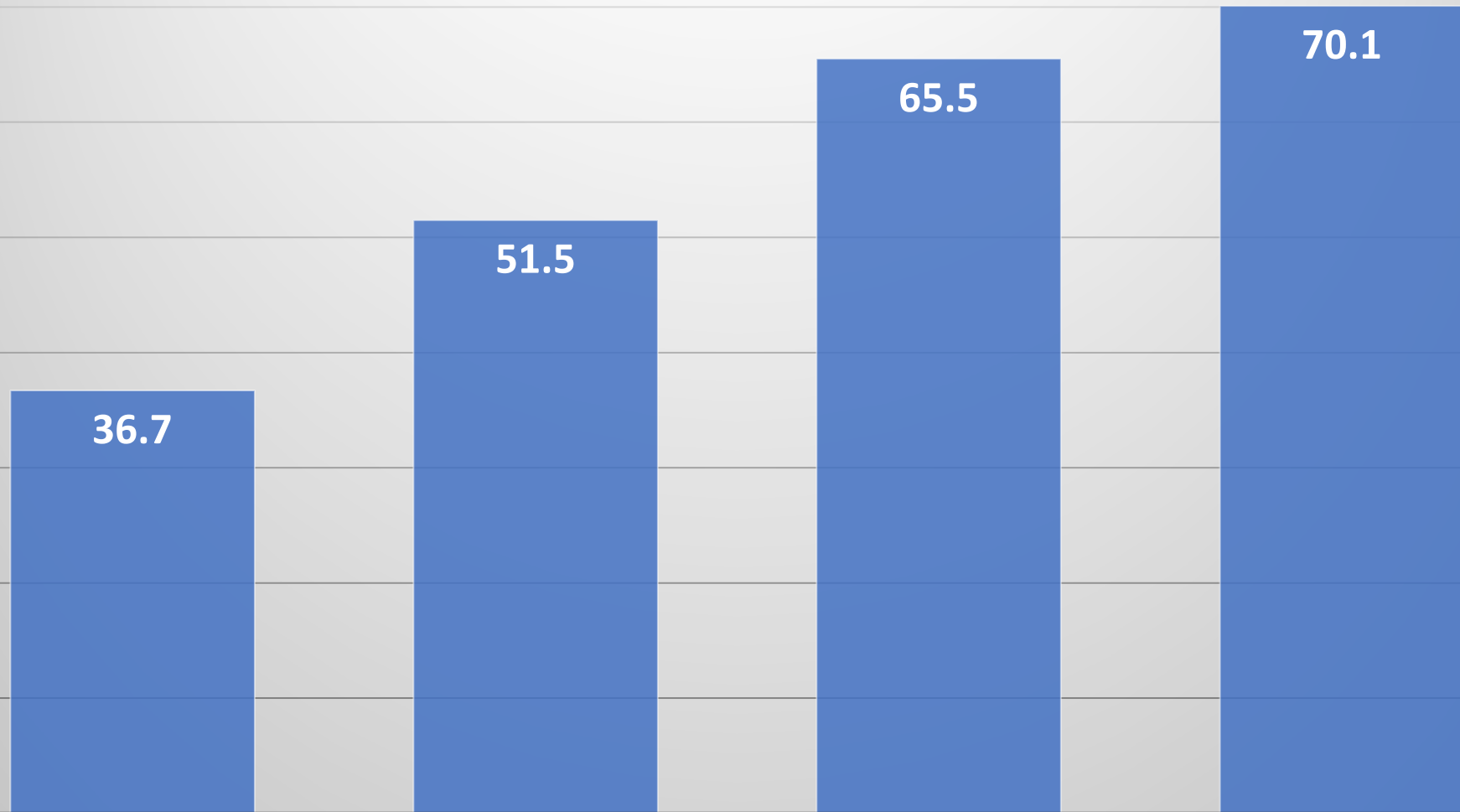
FALL 2019

FALL 2020

FALL 2021

FALL 2022

Success by Modality – HDEV Fall 2022



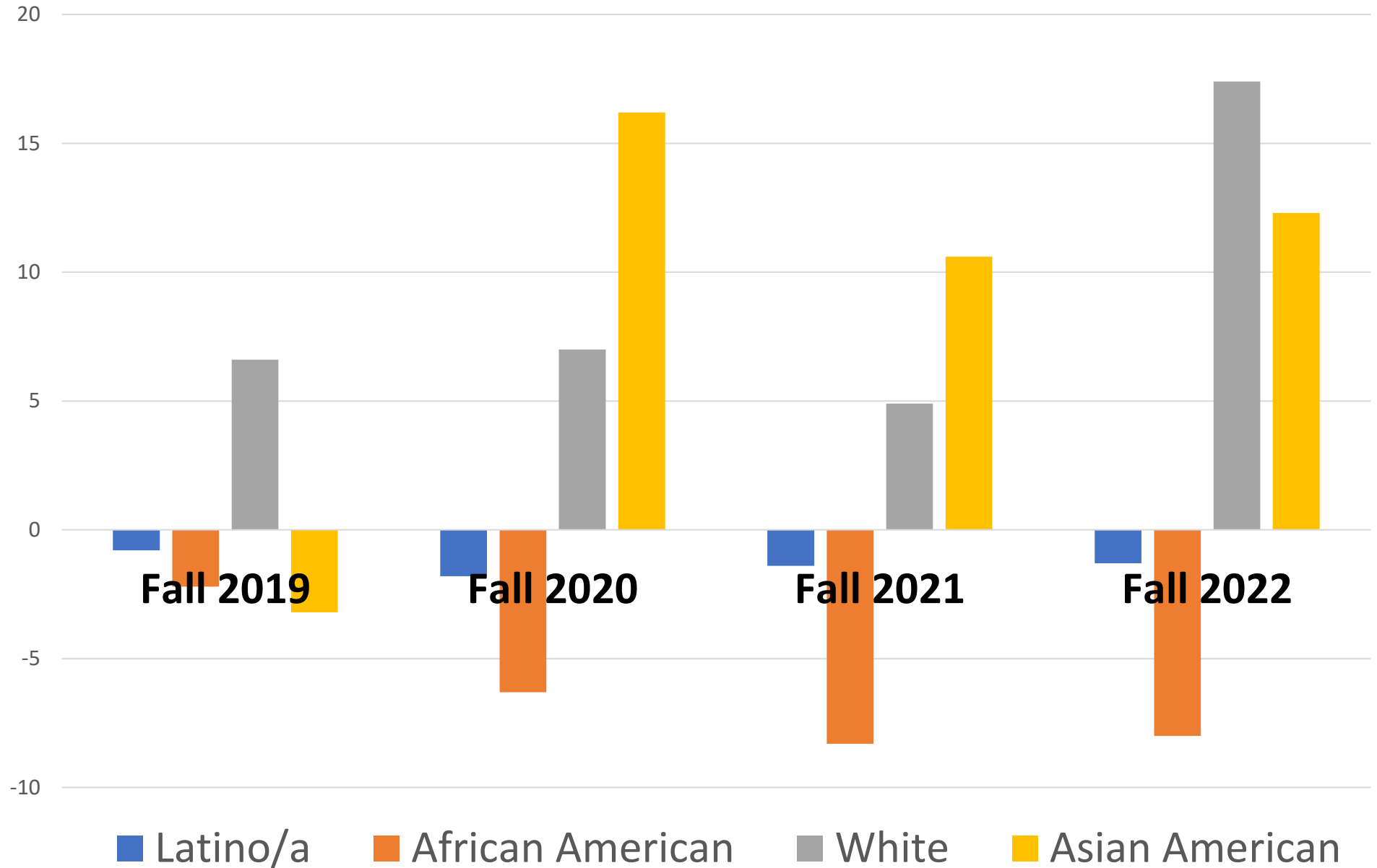
HYBRID

DUAL ENROLLMENT

ONLINE

ON CAMPUS

Success Gaps – HDEV Fall 2019-2022



Key findings (*rounded to whole numbers*):

- Over 4 years, HDEV student success rates were 2% higher than institutional success rates.
- African American students taking HDEV courses had a 4-year average success rate that was 5% higher than African American students campus-wide.
- African American female students taking HDEV courses had a 4-year average success rate that was 5% higher than those campus-wide.
- African American male students taking HDEV courses had a 4-year average success rate that was 5% higher than those campus-wide.
- Overall, Hispanic students taking HDEV courses had a 4-year average success rate that was 6% higher than Hispanic campus-wide.
- Hispanic female students taking HDEV courses had a 4-year average success rate that was 7% higher than those campus-wide.
- Hispanic male students taking HDEV courses had a 4-year average success rate that was 4% higher than those campus-wide.

First Time Students in Summer/Fall with at Least One Attempted Unit in Academic Year												
Headcount	2018-19	2019-20	2020-21	2021-22	4-Year Total	Percent	2018-19	2019-20	2020-21	2021-22	4-Year Total	
HDEV in First Year	1,176	636	546	591	2,949	HDEV in First Year	11%	7%	8%	8%	9%	
No HDEV in First Year	9,705	7,868	6,144	6,903	30,620	No HDEV in First Year	89%	93%	92%	92%	91%	
Total Students	10,881	8,504	6,690	7,494	33,569	Total Students						

Tracking the Students Above...How Many Passed Transfer-level English in Math in First Year												
Headcount	2018-19	2019-20	2020-21	2021-22	4-Year Total	Percent	2018-19	2019-20	2020-21	2021-22	4-Year Total	
HDEV in First Year	154	141	161	153	609	HDEV in First Year	13%	22%	29%	26%	21%	
No HDEV in First Year	659	917	830	708	3,114	No HDEV in First Year	7%	12%	14%	10%	10%	
Total Students	813	1,058	991	861	3,723	Total Students	7%	12%	15%	11%	11%	

Tracking the Students Above...Average Attempted Units in First Year												
Headcount	2018-19	2019-20	2020-21	2021-22	4-Year Total							
HDEV in First Year	22	24	24	23	23							
No HDEV in First Year	13	14	14	13	13							
Total Students	14	14	15	13	14							

Tracking the Students Above...Average Earned Units in First Year												
Headcount	2018-19	2019-20	2020-21	2021-22	4-Year Total							
HDEV in First Year	14	17	18	17	16							
No HDEV in First Year	9	10	11	9	10							
Total Students	10	11	11	10	10							

Assessment, Program Review, Curriculum and Textbooks

Assessment - Spring 2023

HDEV 105 SLO 3

HDEV 115 SLO 3

HDEV PLO 1

Curriculum

None

Program Review

Complete!

Textbooks

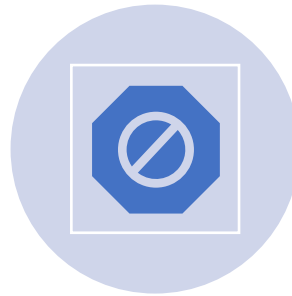
Purchasing 3 class sets of On Course.

CaGETC Area	Subject	Courses/Units
1 – English Communication	English Composition Critical Thinking and Composition Oral Communication	1 course (3 units) 1 course (3 units) 1 course (3 units)
2	Mathematical Concepts and Quantitative Reasoning	1 course (3 units)
3 – Arts and Humanities	Arts Humanities	1 course (3 units) 1 course (3 units)
4	Social and Behavioral Sciences	2 courses (6 units)
5	Physical Science Biological Science Laboratory (for Phys/Bio Science course)	1 course (3 units) 1 course (3 units) (1 unit)
N/A	Lifelong Learning and Self-Development (<i>CSU upper division GE</i>)	-
6	Language other than English (LOTE) (<i>Currently UC only, carries no units</i>)	-
7	Ethnic Studies	1 course (3 units)
Total Courses (units)		11 courses (34 units)

SOCS Building Move and Offices



Construction is delayed – the building will possibly be ready to be occupied on September 1, 2023



Will avoid disrupting instruction with the move.



Possible instruction to begin in new building Winter 2024.

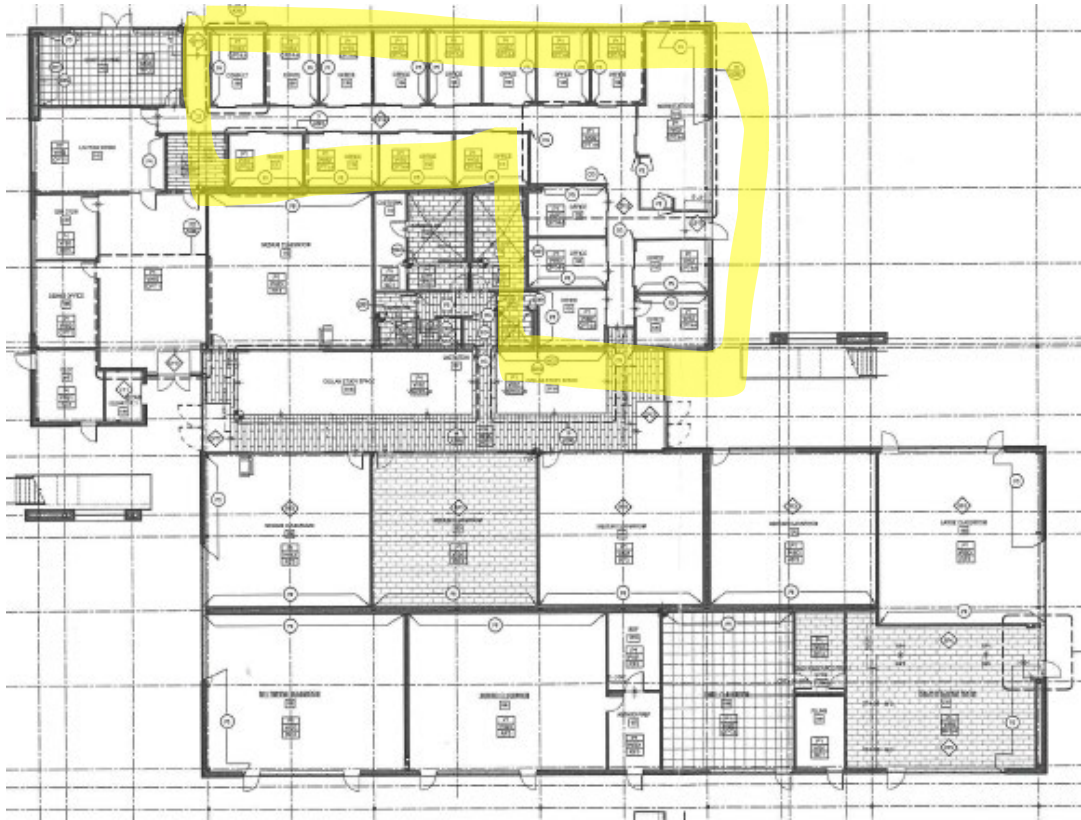


This may all change given weather or other construction delays.

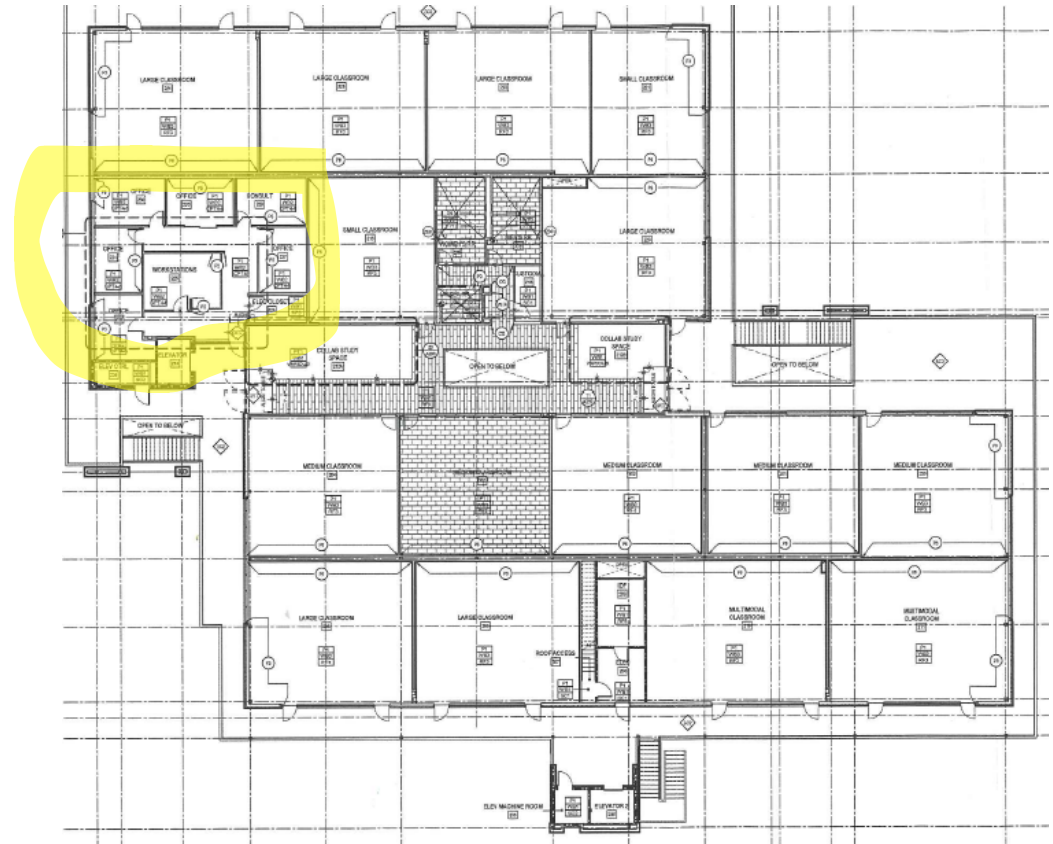
Office Selection Procedure - Seniority

By seniority, faculty members will select a roommate and an office beginning with the most senior faculty member and proceeding according to seniority.



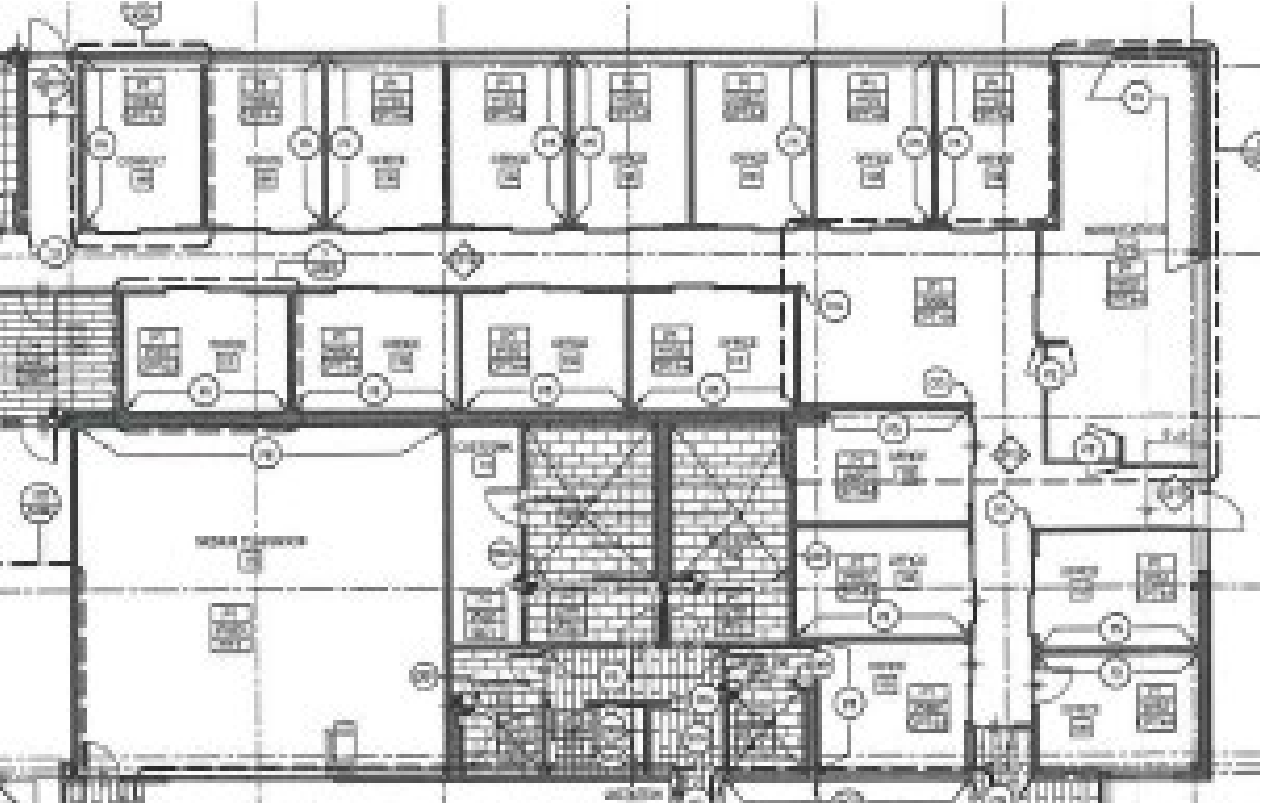


First Floor



Second Floor

First Floor – 15 available offices



Second Floor – 6 available offices

