

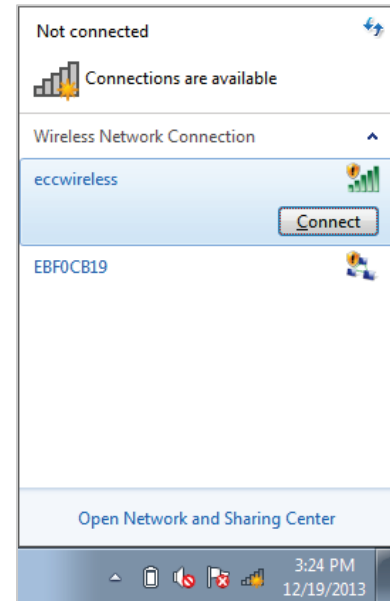
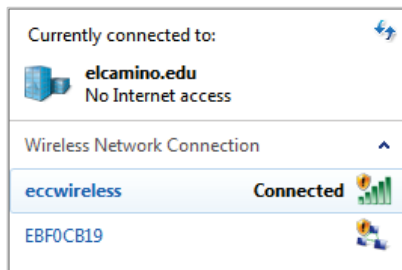


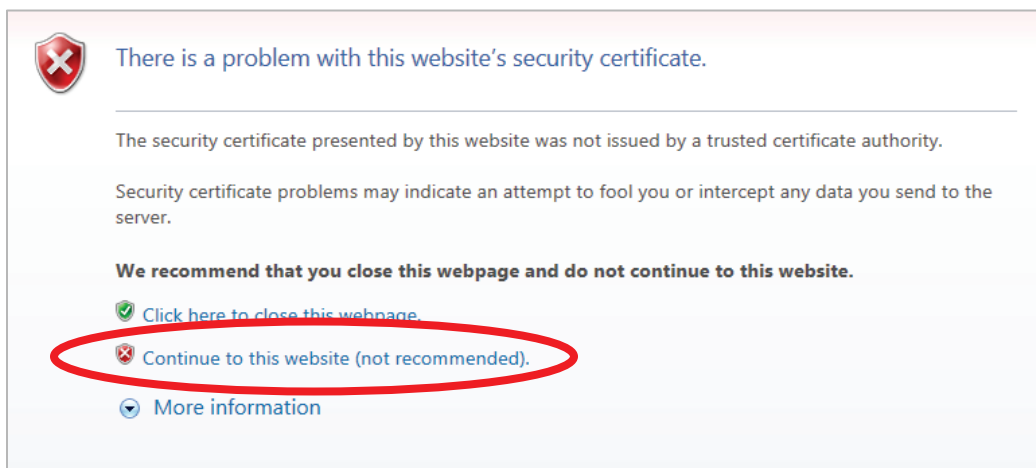
ECC WIRELESS INTERNET ACCESS

LOGON INSTRUCTIONS

1. Click the network icon in your notification area ( or ). Click on the network “**eccwireless**” and then click the “**Connect**” button.
2. Once connected, the network will display “Currently connected to: elcamino.edu, *No Internet Access.*”

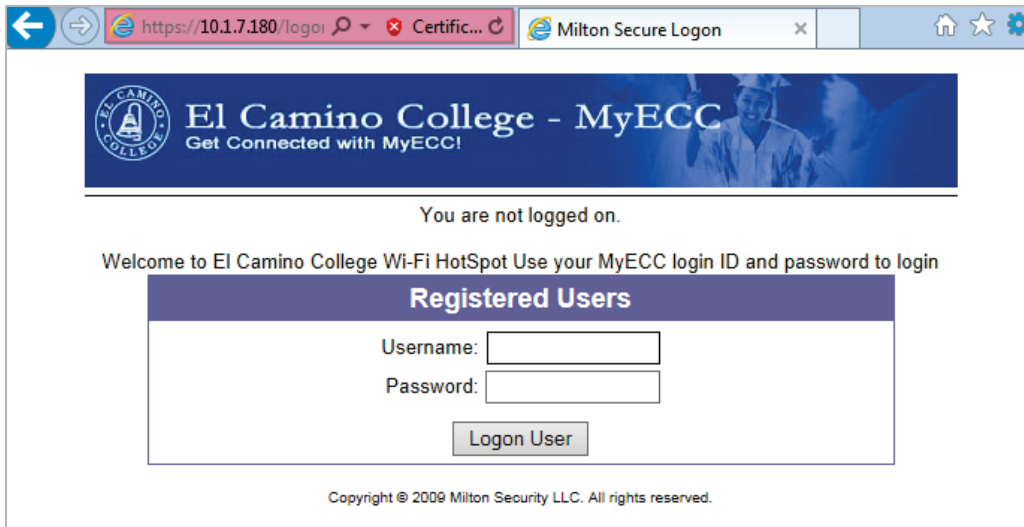


3. To obtain internet access, **open your web browser and attempt to visit any webpage.** Before being directed to the Milton Secure Logon, you may receive the following warning message:



Click the option to “**Continue to this website (not recommended).**”

4. At the Milton Secure Logon screen, **enter your El Camino Network ID username and password** (same as your ECC Email/MyECC Portal), then click the **“Logon User”** button.



You will then be redirected to the webpage you were attempting to visit.

You may continue to browse the internet and have internet access in other applications, but your session may time-out after a period of inactivity and you will again be directed to the Milton Secure Logon screen.