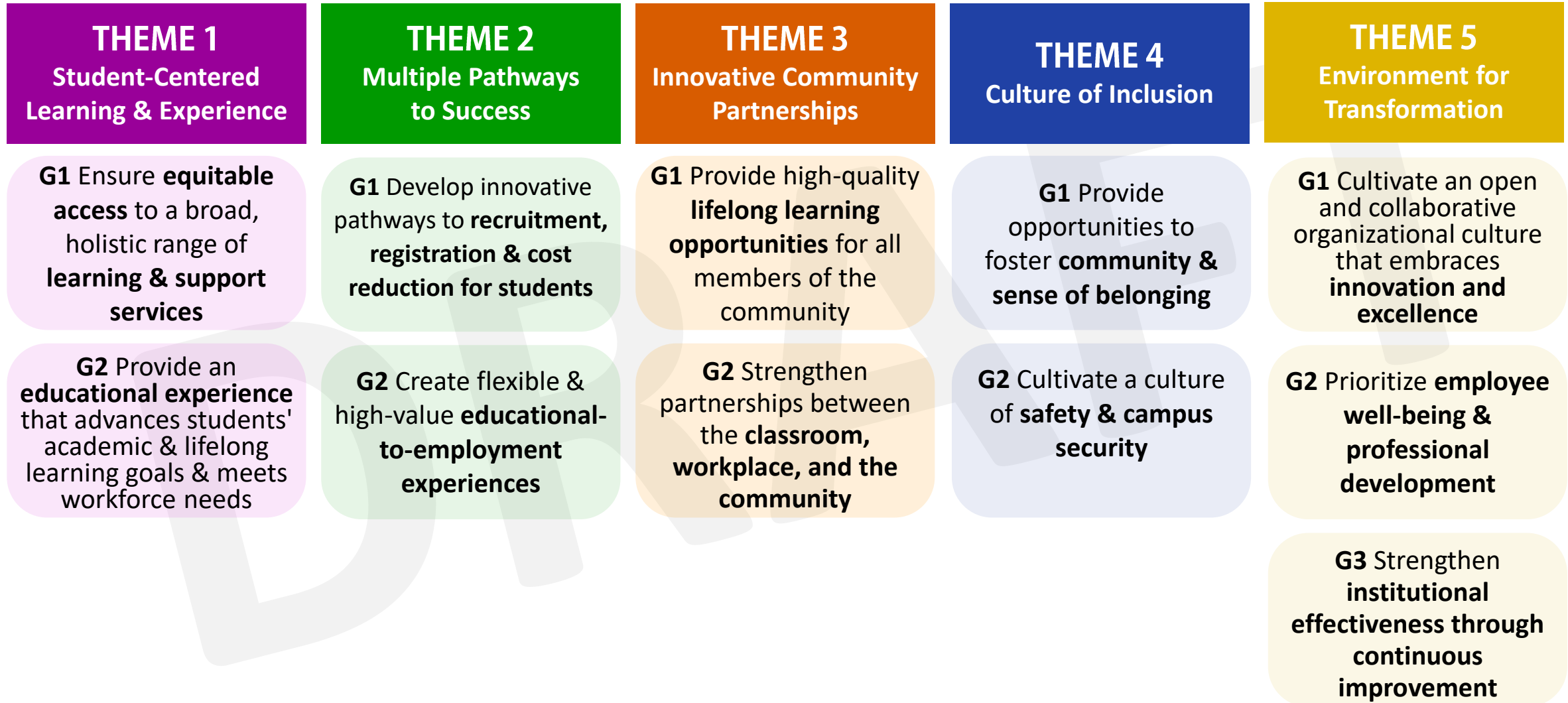


2024-2034 Comprehensive Integrated Plan

DRAFT THEMES, GOALS, AND KEY INITIATIVES

OCTOBER 25, 2023

Current Proposed Themes & Goals



THEME 1

Student-Centered Learning & Experience

G1 Ensure **equitable access** to a broad, holistic range of **learning & support services**

• **KI1** Optimize **learning & support services**, especially for underrepresented student populations

• **KI2** Improve **course schedule** effectiveness for all students through use of **actionable data**

• **KI3** Strengthen on campus & **virtual learning environments**, as well as integrate culturally relevant **curriculum & pedagogical practices**

• **KI4** Support student **access** to technology, campus facilities & services

• **KI5** Ensure **course & student support materials** are available in **accessible** formats, especially for online courses

G2 Provide an **educational experience** that advances students' academic & lifelong learning goals & meets workforce needs

• **KI1** **Align** program offerings & workforce development opportunities to **industry needs**

• **KI2** Increase awareness & use of **student support services**

• **KI3** Effectively use technology to support a **student-centered service** model

• **KI4** Transform **student learning** by leveraging emerging technology

THEME 2

Multiple Pathways to Success

G1 Develop innovative pathways to **recruitment, registration & cost reduction** for students

KI1 Use **new ways to recruit & register**

prospective students from high schools & other student populations

KI2 Increase enrollment from **underrepresented populations**

by leveraging institutional marketing and student outreach efforts

KI3 Provide pathways where students can obtain degrees & certificates completely using **Open Educational Resources (OER) or Zero Textbook Cost (ZTC) options**

G2 Create flexible & high-value **educational-to-employment** experiences

KI1 Provide **short & flexible program pathways**

with multiple on/off ramps that allow students to customize their educational experience

KI2 Establish a **Credit for Prior Learning (CPL)**

offering baseline & increase offerings annually

KI3 Promote the **employment pathways with industry partners**, especially for CTE programs

THEME 3

Innovative Community Partnerships

G1 Provide high-quality **lifelong learning opportunities** for all members of the community

KI1 Establish **new pathways from high school through university**

KI2 Develop **innovative approaches to collaborate with adult school partners and employers** to offer pathways to educational, personal, or career goals

KI3 Increase **noncredit and not-for-credit** community education offerings across disciplines

G2 Strengthen partnerships between the **classroom, workplace, and the community**

KI1 Expand **work-based experiential learning** programs including internship & apprenticeship opportunities

KI2 Leverage the **ECC alumni expertise, experiences & resources** to benefit ECC students

KI3 Leverage the **surrounding El Camino community's expertise & resources** to benefit ECC students

KI4 Assess the best ways to meet the **childcare needs of students and employees**

THEME 4

Culture of Inclusion

G1 Provide opportunities to foster **community & sense of belonging**

• **KI1** Increase **school spirit** for students and employees

• **KI2** Create a **welcoming environment** to enhance sense of belonging, including CTE students

• **KI3** Create a **balanced distribution of space** to support socialization & formal learning

G2 Cultivate a culture of **safety & campus security**

• **KI1** Ensure **employees and students** have the **knowledge** to support a safe and secure campus

• **KI2** Create a culture of **cybersecurity**, and establish **procedures for business continuity**

• **KI3** Ensure **policies, procedures, equipment & facilities** supports a safe and secure campus

• **KI4** Establish a robust **data governance framework & infrastructure** to ensure data quality, accessibility & security

THEME 5

Environment for Transformation

G1 Cultivate an open and collaborative organizational culture that embraces **innovation and excellence**

KI1 Create a process to support the evaluation & implementation of **innovative teaching & learning practices**

KI2 Create a process to support the evaluation & implementation of **new ideas to support operational excellence**

KI3 Create intentional **spaces to promote collaborative communication and innovation**

KI4 Create **opportunities for cross disciplinary collaboration & employee knowledge sharing**

G2 Prioritize **employee well-being & professional development**

KI1 Equip all **employees** with the necessary **knowledge, skills and support** to provide **outstanding service**

KI2 Implement a comprehensive well-being program to **prioritize physical & mental health of employees**

G3 Strengthen **institutional effectiveness through continuous improvement**

KI1 **Streamline processes** to support a student-centered experience

KI2 Enhance processes & analysis tools to ensure **efficient use of resources** for environmental, financial, and operational sustainability

KI3 **Improve campus infrastructure efficiency, technology, and facilities utilization** to support program needs

KI4 **Develop a comprehensive data literacy program** to provide employees necessary skills & knowledge to collect, analyze, interpret & integrate data into decision-making processes

THEME 1 Student-Centered Learning & Experience

G1 Ensure equitable access to a broad, holistic range of learning & support services

K11 Optimize learning & support services, especially for underrepresented student populations

K12 Improve course schedule effectiveness for all students through use of actionable data

K13 Strengthen on campus & virtual learning environments, as well as culturally relevant curriculum & pedagogical practices

K14 Support student access to technology, campus facilities & services

K15 Ensure course & student support materials are available in accessible formats, especially for online courses

G2 Provide an educational experience that advances students' academic & lifelong learning goals & meets workforce needs

K11 Align program offerings & workforce development opportunities to industry needs

K12 Increase awareness & use of student support services

K13 Effectively use technology to support a student-centered service model

K14 Transform student learning by leveraging emerging technology

THEME 2 Multiple Pathways to Success

G1 Develop innovative pathways to recruitment, registration & cost reduction for students

K11 Use new ways to recruit & register prospective students from high schools & other student populations

K12 Increase enrollment from underrepresented populations by leveraging institutional marketing and student outreach efforts

K13 Provide pathways where students can obtain degrees & certificates completely using Open Educational Resources (OER) or Zero Textbook Cost (ZTC) options

G2 Create flexible & high-value educational-to-employment experiences

K11 Provide short & flexible program pathways with multiple on/off ramps that allow students to customize their educational experience

K12 Establish a Credit for Prior Learning (CPL) offering baseline & increase offerings annually

K13 Promote the employment pathways with industry partners, especially for CTE programs

THEME 3 Innovative Community Partnerships

G1 Provide high-quality lifelong learning opportunities for all members of the community

K11 Establish new pathways from high school through university

K12 Develop innovative approaches to collaborate with adult school partners and employers to offer pathways to educational, personal, or career goals

K13 Increase noncredit and not-for-credit community education offerings across disciplines

G2 Strengthen partnerships between the classroom, workplace, and the community

K11 Expand work-based experiential learning programs including internship & apprenticeship opportunities

K12 Leverage the ECC alumni expertise, experiences & resources to benefit ECC students

K13 Leverage the surrounding El Camino community's expertise & resources to benefit ECC students

K14 Assess the best ways to meet the childcare needs of students and employees

THEME 4 Culture of Inclusion

G1 Provide opportunities to foster community & sense of belonging

K11 Increase school spirit for students and employees

K12 Create a welcoming environment to enhance sense of belonging, including CTE students

K13 Create a balanced distribution of space to support socialization & formal learning

G2 Cultivate a culture of safety & campus security

K11 Create a culture of cybersecurity, and establish procedures for business continuity

K12 Ensure employees and students have the knowledge to support a safe and secure campus

K13 Ensure policies, procedures, equipment & facilities supports a safe and secure campus

K14 Establish a robust data governance framework & infrastructure to ensure data quality, accessibility & security

THEME 5 Environment for Transformation

G1 Cultivate an open and collaborative organizational culture that embraces innovation and excellence

K11 Create a process to support the evaluation & implementation of new ideas, and innovative teaching & learning practices

K12 Create intentional spaces to promote collaborative communication and innovation

K13 Create opportunities for cross disciplinary collaboration & employee knowledge sharing

G2 Prioritize employee well-being & professional development

K11 Equip all employees with the necessary knowledge, skills and support to provide outstanding service

K12 Implement a comprehensive well-being program to prioritize physical & mental health of employees.

G3 Strengthen institutional effectiveness & continuous improvement

K11 Streamline processes to support a student-centered experience

K12 Enhance processes & analysis tools to ensure efficient use of resources for environmental, financial, and operational sustainability

K13 Improve campus infrastructure efficiency, technology, and facilities utilization to support program needs

K14 Develop a comprehensive data literacy program to provide employees necessary skills & knowledge to collect, analyze, interpret & integrate data into decision-making processes