

# EL CAMINO COLLEGE

FACILITIES MASTER PLAN UPDATE | COLLEGE COUNCIL 02 | 09.20.2021



# AGENDA

1. SINCE WE LAST GOT TOGETHER
2. LINKING FACILITIES, INSTRUCTION, STUDENT SERVICES, TECHNOLOGY
3. MASTER PLANNING BEST PRACTICES
4. SWOT ANALYSIS
5. GUIDING PRINCIPLES AND OBJECTIVES
6. CAMPUS SURVEY
7. NEXT STEPS



# SINCE WE LAST GOT TOGETHER

1. Campus Tours (exterior spaces only)
2. Orientation Meetings:
  - Board of Trustees
  - Citizen's Oversight Committee (Jorge)
  - President's Cabinet
  - Council of Deans
  - Planning and Budget
  - Facilities Steering Committee
  - Campus Technology Plan Workgroup
  - Technology Committee
3. Updated Baseline Drawings
4. Conducted Facilities Department Survey
5. Campus SWOT Analysis



# AGENDA

1. SINCE WE LAST GOT TOGETHER
2. LINKING FACILITIES, INSTRUCTION, STUDENT SERVICES,  
TECHNOLOGY
3. MASTER PLANNING BEST PRACTICES
4. SWOT ANALYSIS
5. GUIDING PRINCIPLES AND OBJECTIVES
6. CAMPUS SURVEY
7. NEXT STEPS

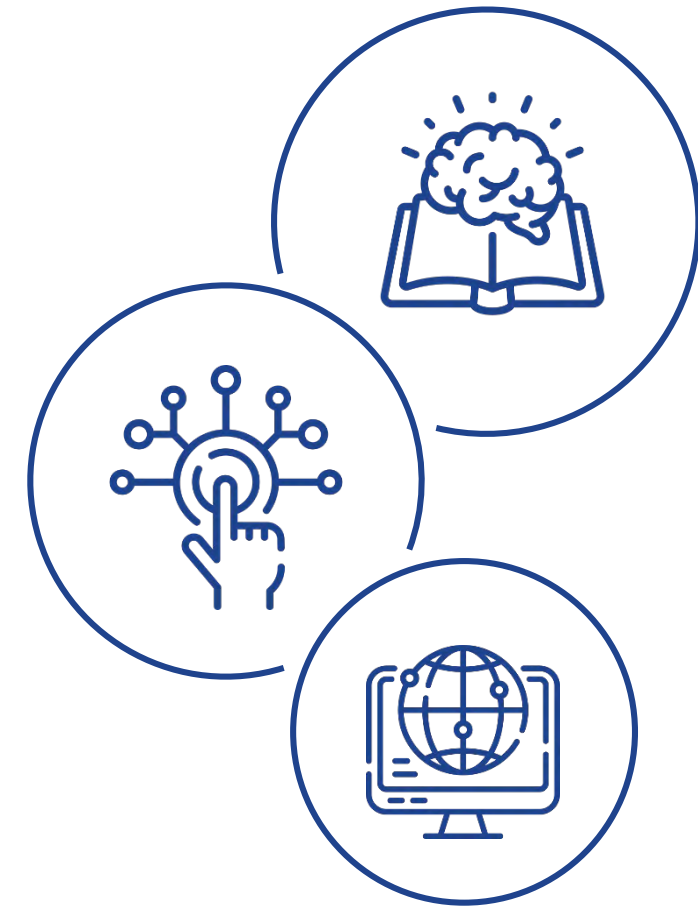




# LINKING FACILITIES, INSTRUCTION, STUDENT SERVICES, TECHNOLOGY

## TRENDS AND BEST PRACTICES

1. Bridging the Digital Equity Gap
2. Active Learning Methodology
3. Anytime, Anywhere Access
4. New Ways of Bringing Students Back
5. Faculty and Staff Digital Development



# BRIDGING THE DIGITAL EQUITY GAP: UBIQUITIOUS WIFI?

## TYPICAL NEEDS:

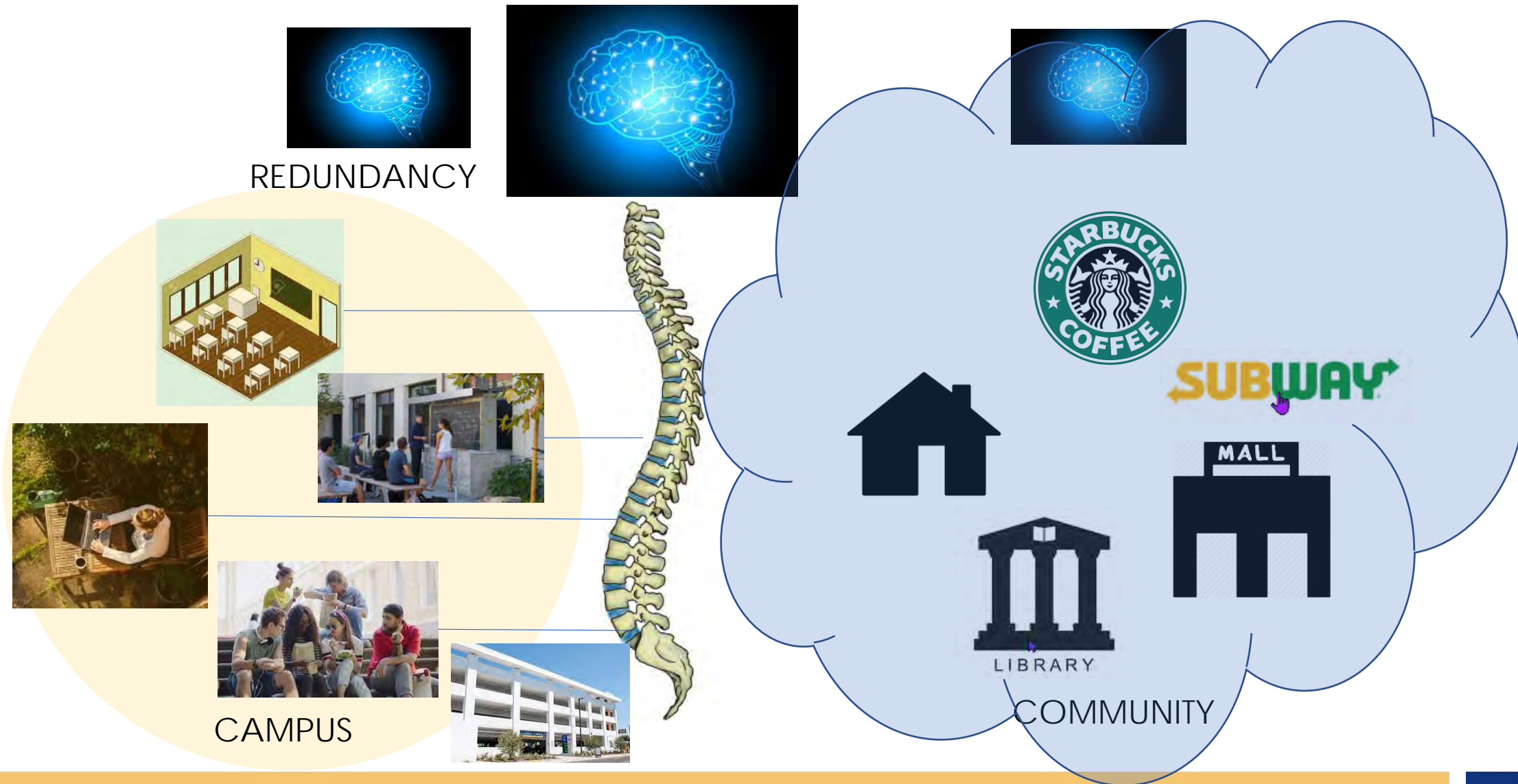
- Fast and reliable wireless experience
- Simple and secure model for managing owned IoT devices
- Flexible and automated model for adding wireless access
- Added coverage in widespread areas outside of the classroom

## OUTCOMES:

- Delivers on high expectations to supply exceptional academic and off-hours experiences
- Eliminates extensive IT planning and deployment guesswork
- Reduces IT support turnarounds from months to hours
- Wireless is now rated the top IT delivered technology service by students (for customer support, quality of institution-provided equipment and applications and no impact to student's data plans - Chapman University)



# BRIDGING THE DIGITAL EQUITY GAP AND REBUILDING ENROLLMENT?



LINKING FACILITIES, INSTRUCTION, STUDENT SERVICES, TECHNOLOGY  
FACILITIES MASTER PLAN UPDATE | 09.20.2021



ALMA + HPI  
strategies architecture

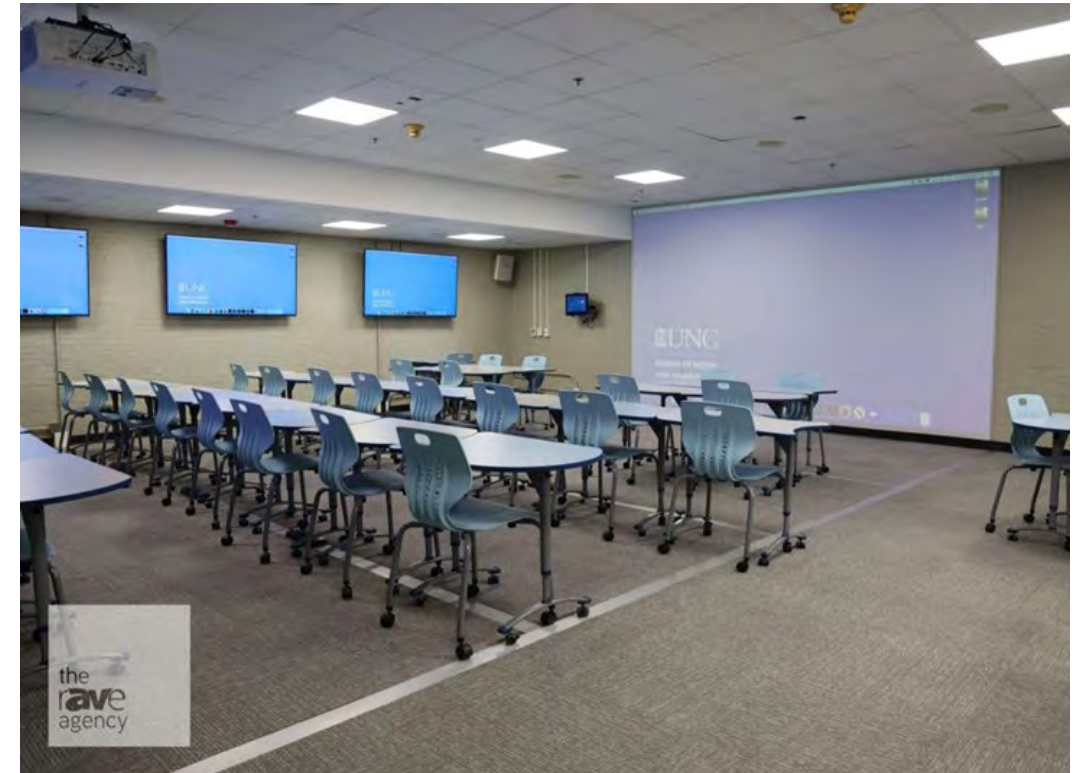
# ACTIVE LEARNING METHODOLOGY

## TYPICAL NEEDS:

- Classroom AV with high resolution Projects or Displays
- Sound reinforcement
- ADA Compliant Assisted Listening Systems
- AV-Equipped Podiums — Flexible Presentation Options
- Reliable Lecture Streaming/Recording
- Group huddle and collaboration spaces

## OUTCOMES:

- Instructors like the fast switching between sources and the user-friendly touch panels.
- Students are more engaged, learn more easily, and retain more when lessons are presented in rich and immersive multimedia formats.
- The installation successfully delivers real-time video at high resolution
- IT staff remotely operate and provide assistance, saving time and resources





# ACTIVE LEARNING METHODOLOGY: REPURPOSING CASE STUDY

## SOUTHWEST COLLEGE: S.O.C.T.E. REPURPOSING

- Nursing in deteriorating modular building space
- Department “promised” new Nursing building
- College Capacity Load Ratios very high
- School of Career Technical Education space underutilized
- Re-purposed SOCTE into Nursing Ed showcase
- Benefits:
  - \$15 Million New Building Project becomes...
  - \$2.5 Million Repurposing Project
    - Saved Time, Money and Future funding eligibility
    - \$1.5 Million IT, smart manikins, augmented reality gear
    - Movable desks, laptops + securable charging cabinets can flip classrooms and computer labs
    - Model for all other LACCD Nursing/Allied Health Projects



# ANYTIME, ANYWHERE ACCESS

## TYPICAL NEEDS:

- Student need to access course and applications outside of classroom
- Shared departmental computer labs
- Limited IT Resources

## OUTCOMES:

- Enables hybrid learning environment with access to software remotely
- Efficient space utilization
- Reduced ongoing operating costs
- Reduced cybersecurity breaches



Traditional Desktop Computing	Virtual Desktop Infrastructure
\$66K/year	\$38K/year*

LACCD: Estimated Yearly Operating Costs  
(4 Labs, 160 computers total)

\* With robust IT backbone



# NEW WAYS OF BRINGING STUDENTS BACK



## What is esports?

Electronic Sports / eSports / esports is a form of sport competition using video games - competitive gaming - mostly in a team environment although there are some single person player games as well.

Competitors from different leagues or teams face off in the same games that are popular with at-home gamers: Fortnite, League of Legends, Counter-Strike, Call of Duty, Overwatch and Madden NFL, to name a few. Check out [CNN's article "What is eSports?"](#) for more info, and this [article from The Sport Digest](#) about the spelling debate.

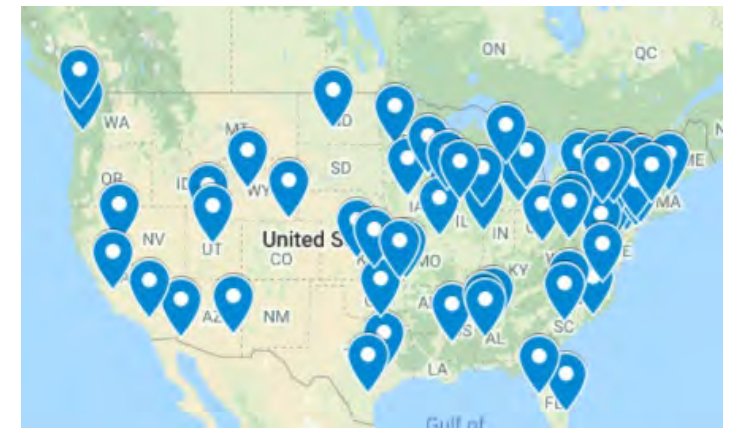
By organizing an Esports Club for Coastline students, we're bringing together passionate (or newly interested) gamers to have fun and enhance our school community.

<https://www.coastline.edu/student-life/clubs-and-organizations/esports/index.php>



NJCAA<sup>TM</sup>

**National Junior College Athletic  
Association Esports**



# FACULTY AND STAFF DIGITAL DEVELOPMENT

## SAN DIEGO MESA COLLEGE LEARNING OPPORTUNITIES FOR TRANSFORMATION (LOFT)

1. The campus hub for professional development activities
2. Specifically designated for employee training and development on a daily basis
3. Includes small and large group training spaces, soft-seating, collaborative workstations, computer stations and quiet rooms
4. The furniture designed to be flexible and transformative

Training/Meeting Room – 18 Person Capacity

Presentation Room (LRC-435) – 50 Person Capacity

Special Events – 100 Person Capacity

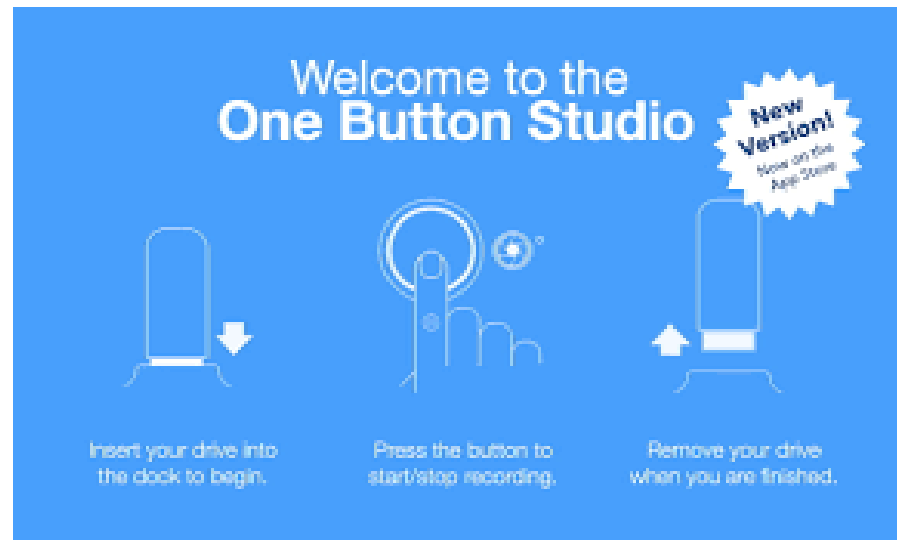
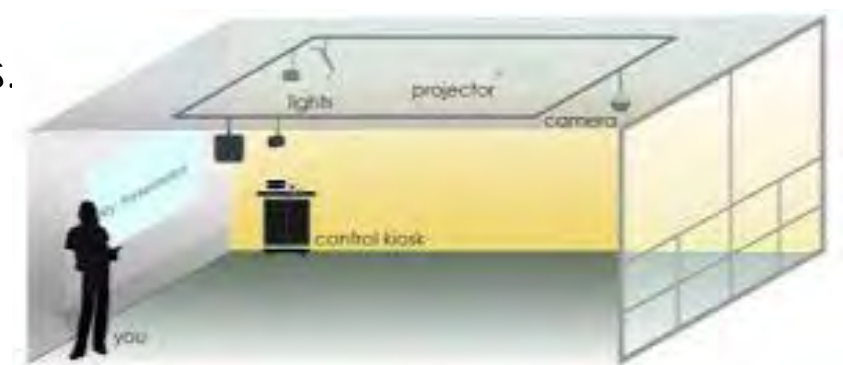




# FACULTY, STAFF AND STUDENT DIGITAL CONTENT DEVELOPMENT

## UNIVERSITY OF CALIFORNIA SAN DIEGO (AND OTHERS) STUDIO U (AKA ONE BUTTON STUDIO)

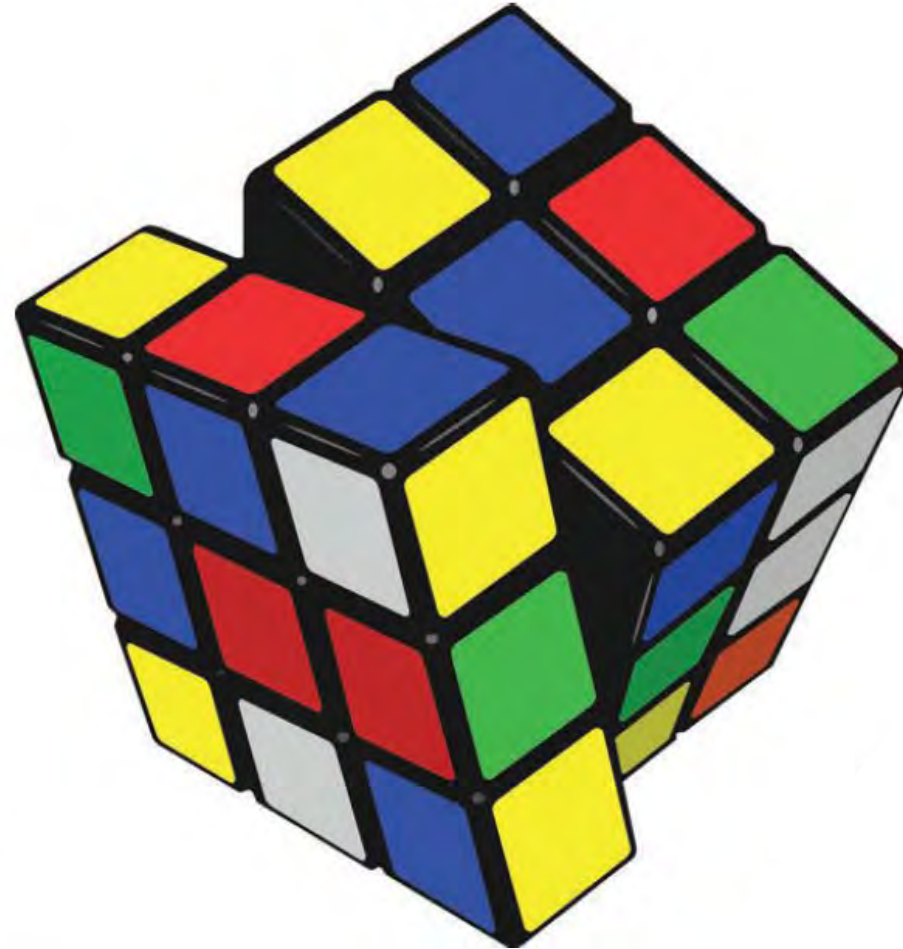
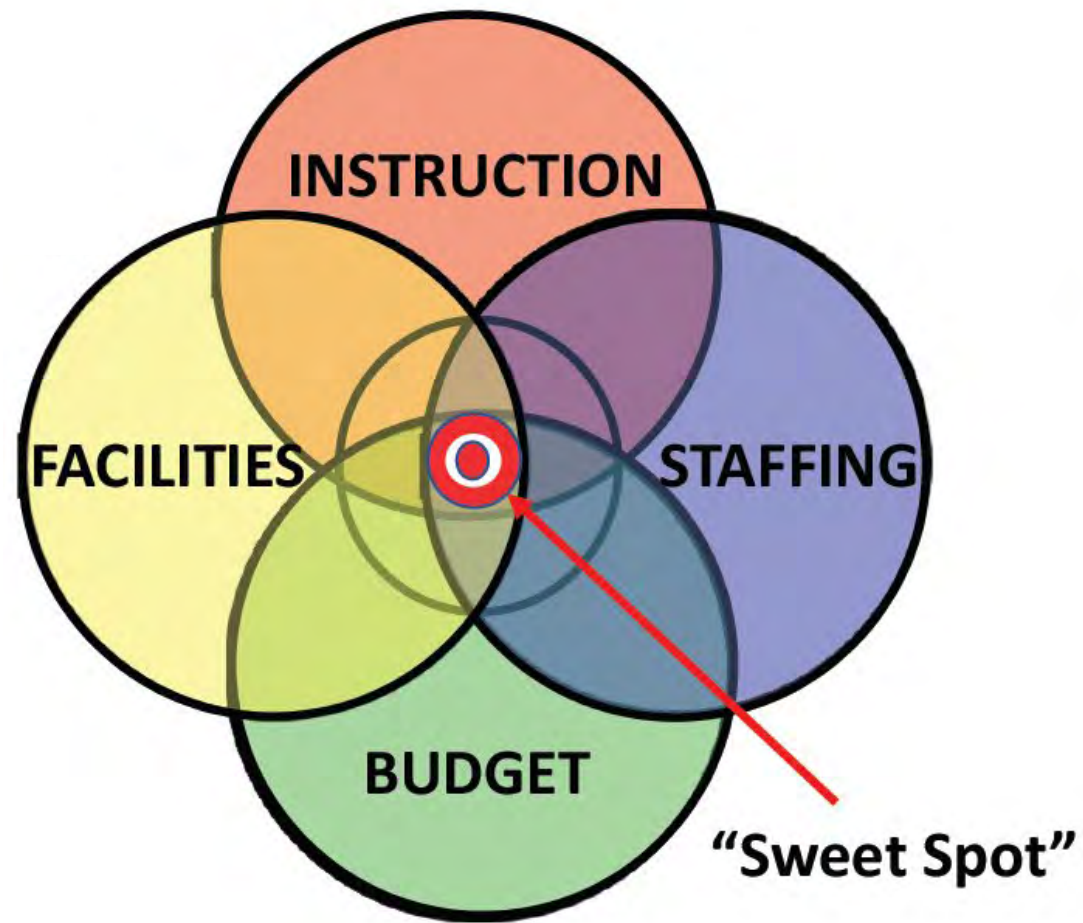
A free-to-use resource for the campus to support the creation of video content for instruction and academic programs serving on-campus audiences. With simple push-button controls, you'll be able to record green screen, learning glass, screen annotation or other kinds of videos. Once finished you will walk away with a USB thumb drive containing a completed video you made all by yourself.



# LINKING FACILITIES, INSTRUCTION, STUDENT SERVICES, TECHNOLOGY SUSTAINABLY



# LINKING FACILITIES, INSTRUCTION, STUDENT SERVICES, TECHNOLOGY SUSTAINABLY



# NO MARGIN – NO MISSION

A VISION WITHOUT RESOURCES IS A MIRAGE





# AGENDA

1. SINCE WE LAST GOT TOGETHER
2. LINKING FACILITIES, INSTRUCTION, STUDENT SERVICES, TECHNOLOGY
3. MASTER PLANNING BEST PRACTICES
4. SWOT ANALYSIS
5. GUIDING PRINCIPLES AND OBJECTIVES
6. CAMPUS SURVEY
7. NEXT STEPS



# SUPPORTING STUDENTS OUTSIDE OF THE CLASSROOM



SHADE



PLUG-IN



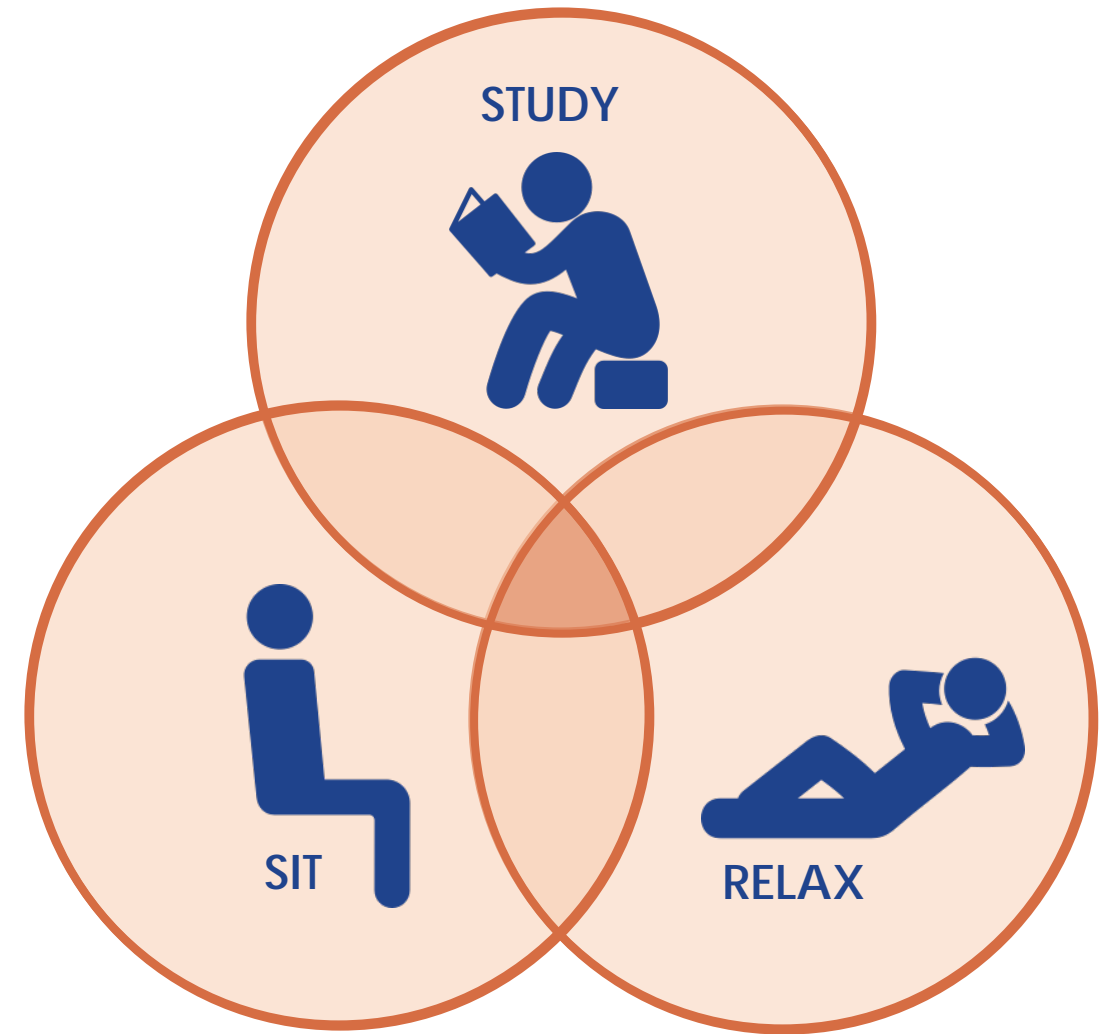
FOOD



COMFORTABLE  
TEMPERATURE



WIFI  
CONNECTIVITY





# PLANNING BEST PRACTICES

## MULTI-PURPOSE OUTDOOR SPACES





# PLANNING BEST PRACTICES

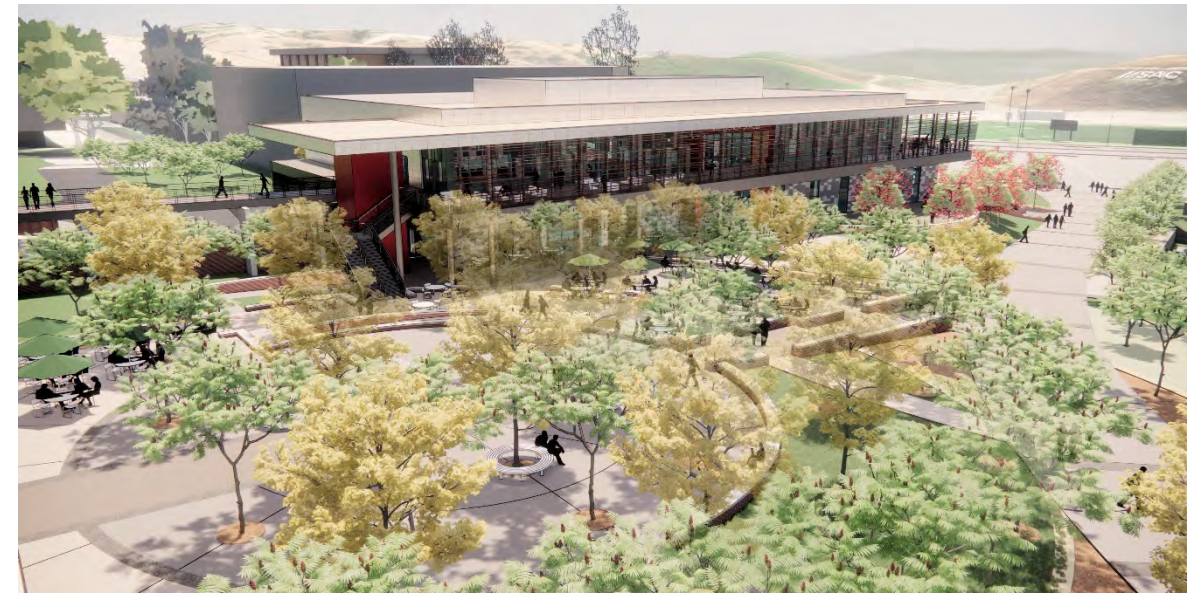
## PROGRAMMABLE OUTDOOR SPACES





# PLANNING BEST PRACTICES

## LARGE PROMENADES + FOOD + SHADE





# PLANNING BEST PRACTICES

## SIT / STUDY / RELAX





# PLANNING BEST PRACTICES

## WAYFINDING





# PLANNING BEST PRACTICES

## MULTI-MODAL ACCESS





# AGENDA

1. SINCE WE LAST GOT TOGETHER
2. LINKING FACILITIES, INSTRUCTION, STUDENT SERVICES, TECHNOLOGY
3. MASTER PLANNING BEST PRACTICES
4. SWOT ANALYSIS
5. GUIDING PRINCIPLES AND OBJECTIVES
6. CAMPUS SURVEY
7. NEXT STEPS



# S W O T

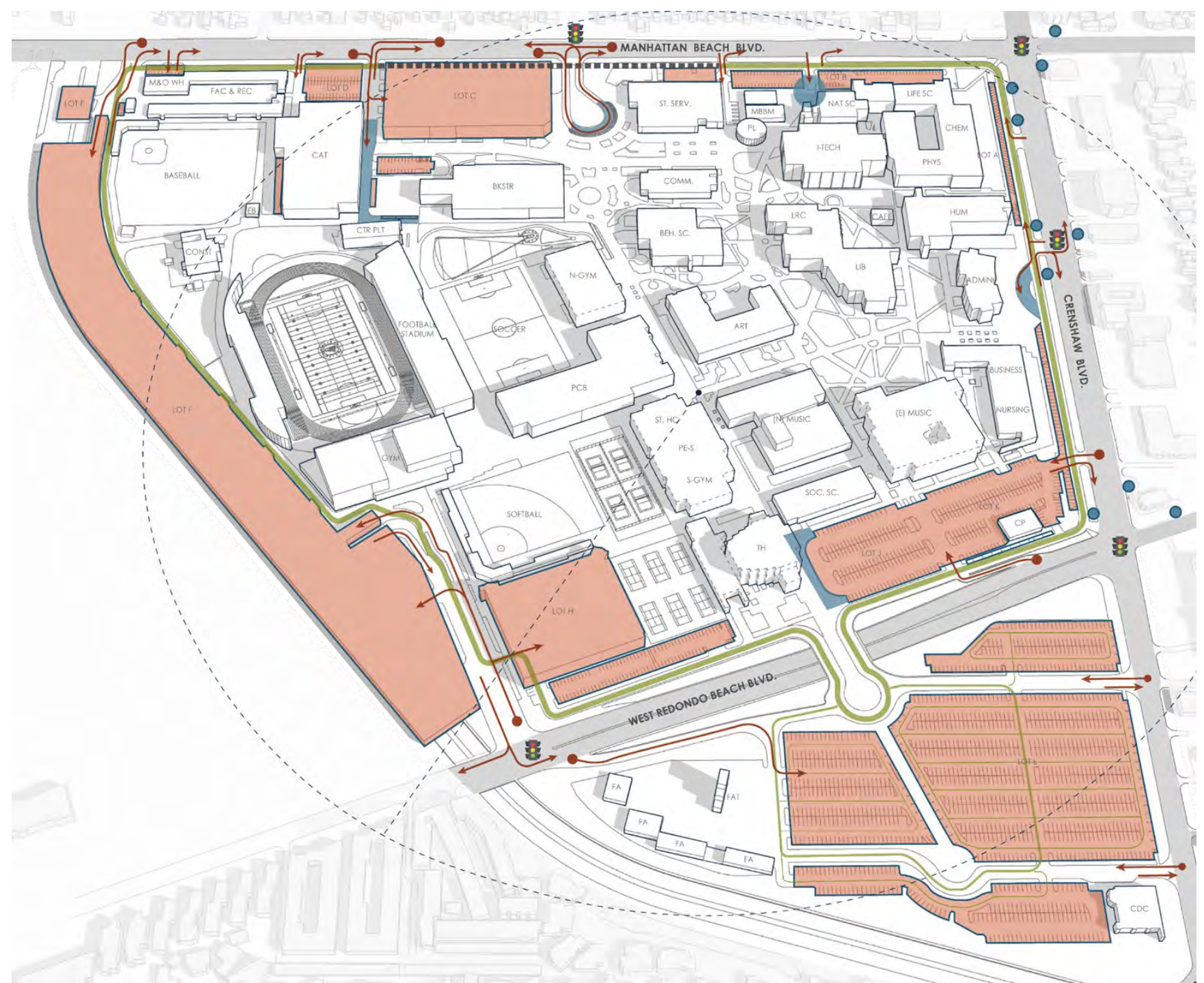
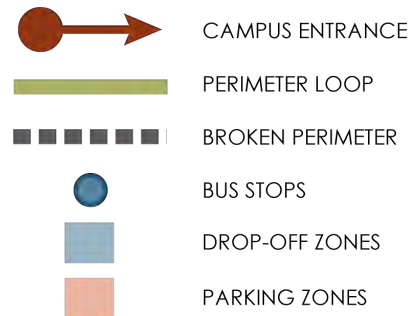
STRENGTHS WEAKNESSES OPPORTUNITIES THREATS





# VEHICULAR ACCESS AND CIRCULATION

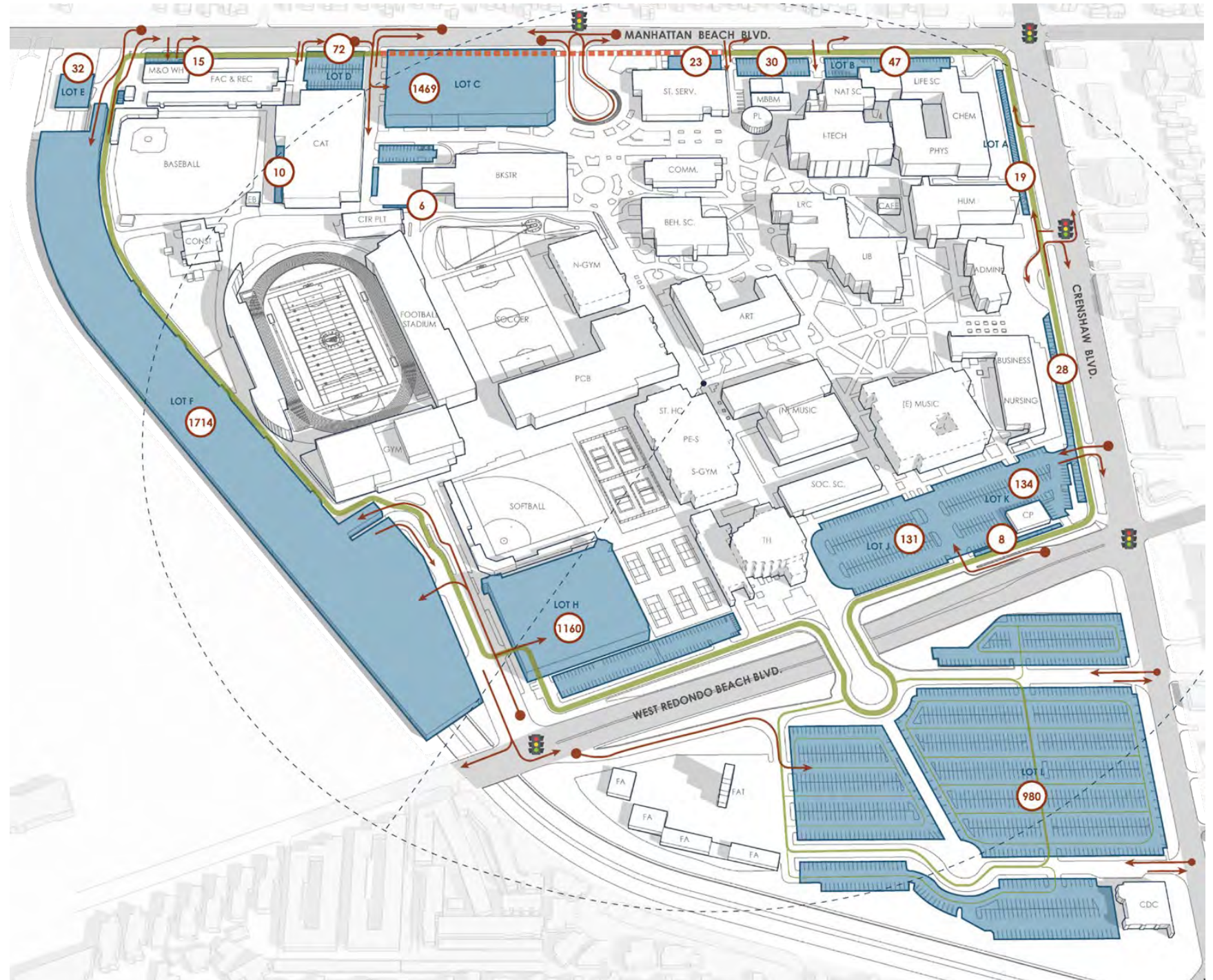
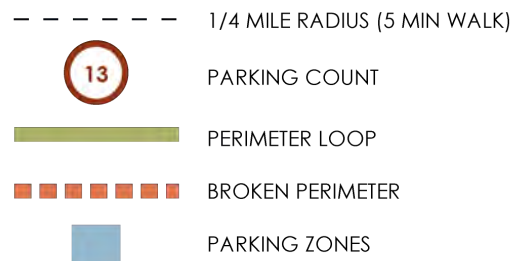
- Multiple Entry Points (good / bad / ugly)
- Limited visual presence from Street / Limited Campus Entry Signage
- No strong sense of arrival
- Partial Loop Road
- Distributed Drop offs
- Transit Access (Crenshaw Blvd)





# PARKING ANALYSIS

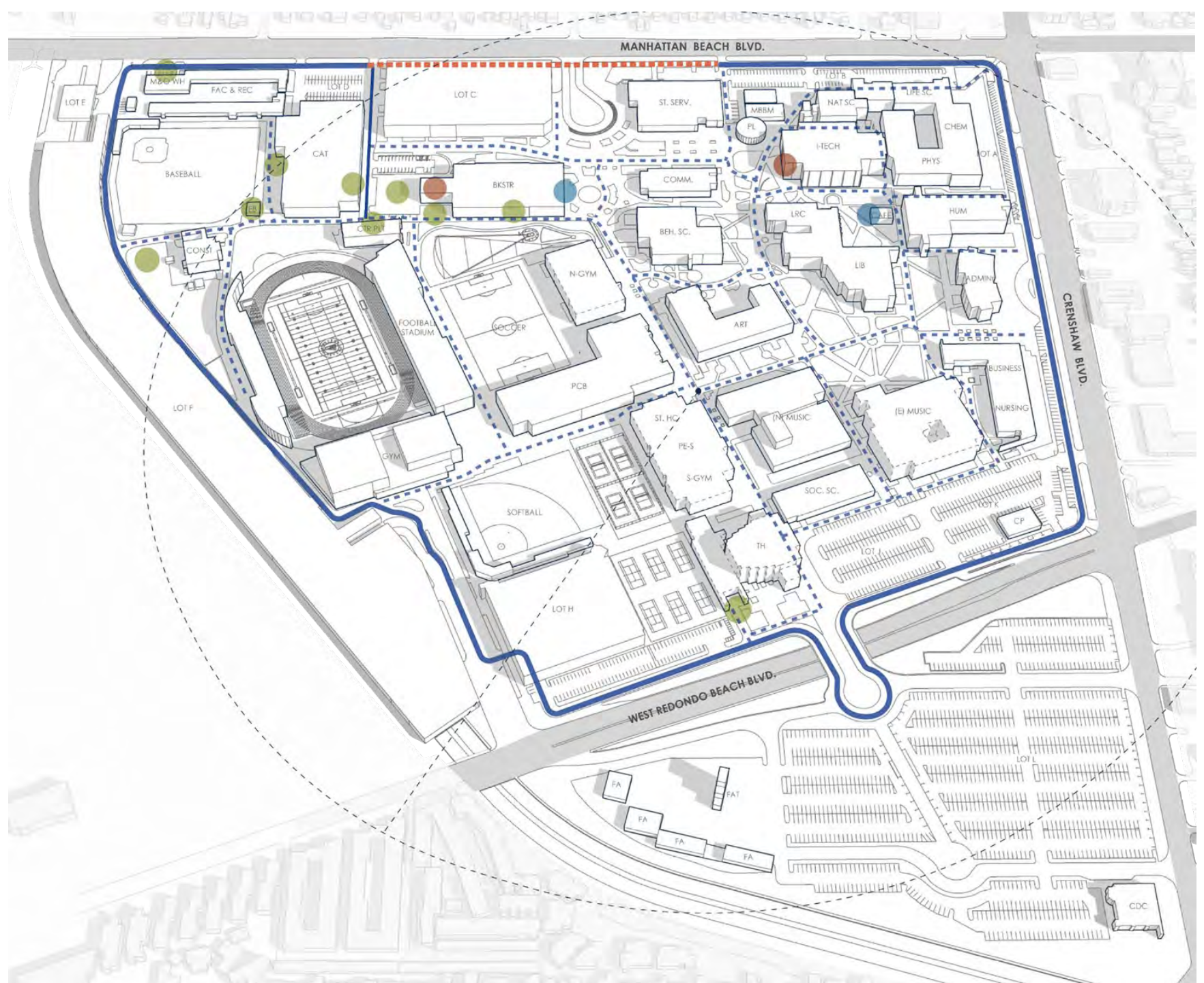
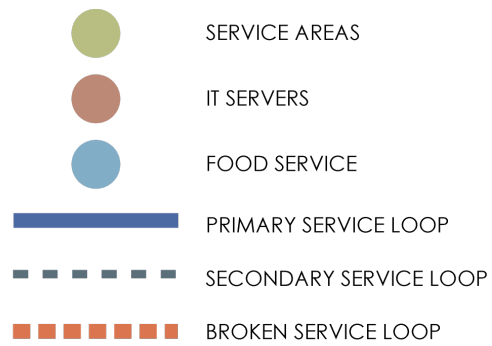
- Distributed Parking
- Limited Internalized Parking
- Approximately 5,900 Parking Stalls Today
  - Fall 2019 FTES: 18,234\*
  - 3.1students : 1 parking stall = GOOD!
- Most stalls / Access to parking lots are within a 5 Minute Walk to the campus core
- Significant use of ON-Street parking @ Manhattan Beach Blvd.





# SERVICE CIRCULATION

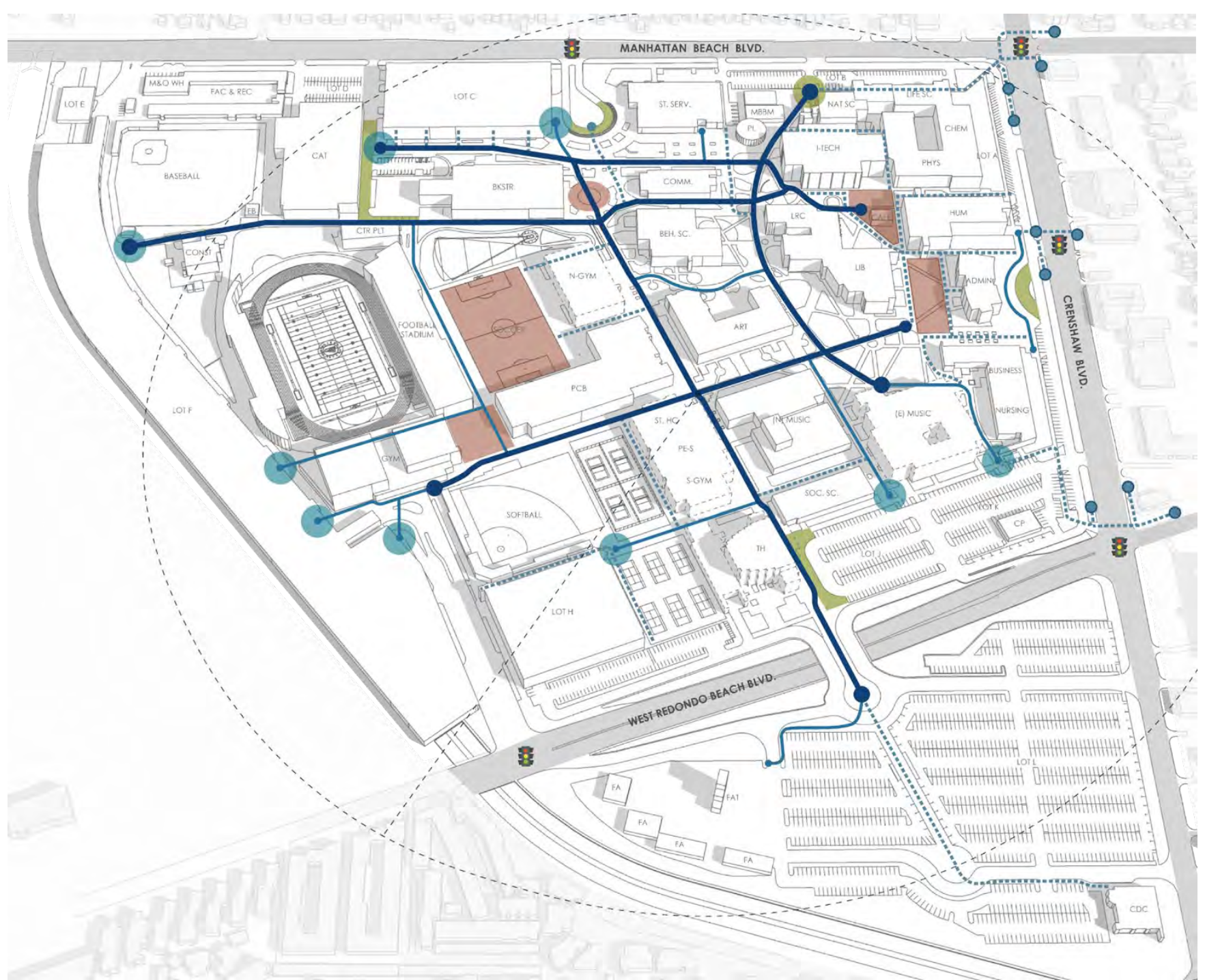
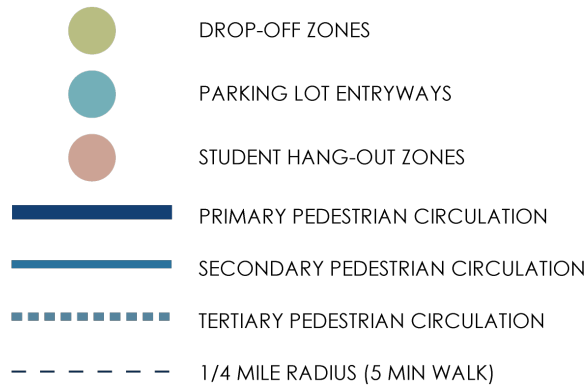
- Loop Road serves majority of Campus
- Potential pedestrian conflicts through the center of campus
  - Trash Collection
  - Food Service
  - Supplies
  - ?





# PEDESTRIAN CIRCULATION

- Pedestrian Promenades
  - Strong Campus Organization
  - Ease of movement (when construction is completed)
  - Inconsistent Shade
- Wayfinding is problematic
  - Limited signage - Building & Site
  - Inconsistency in hardscape/ landscape materials leading to hierarchy of pathways
- Strong connections

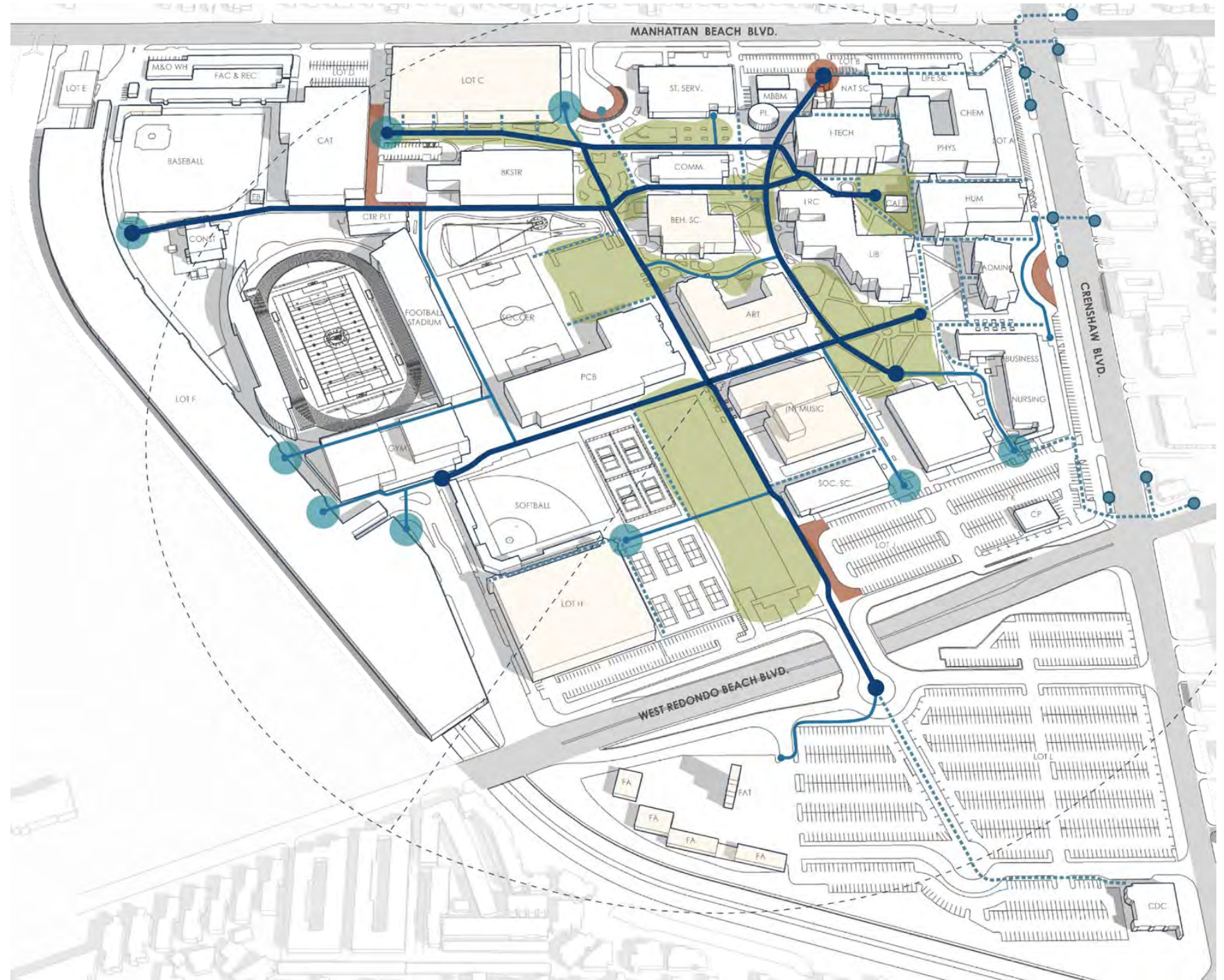




# OPEN SPACE

- Established Trees / Park like setting (south quad)
- Enhance existing outdoor student spaces conducive to gather / study / relax (with amenities)
- Limited program specific outdoor space?
- Where is the heart of campus / collegial space?

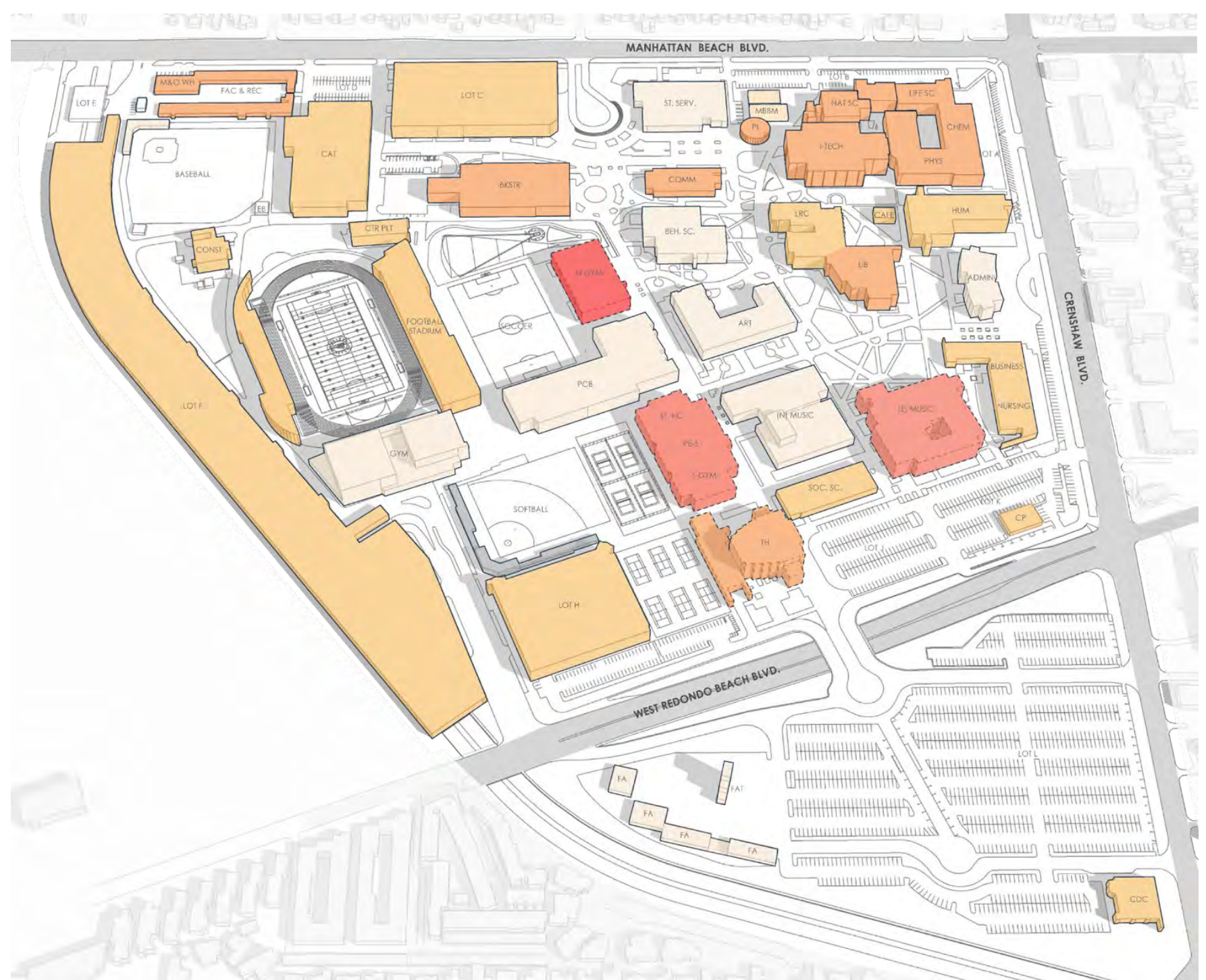
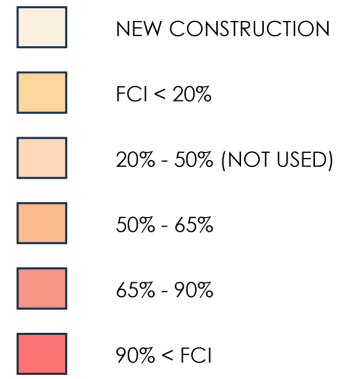
- GREEN SPACES ALONG MAIN PEDESTRIAN SPINE
- BUS STOPS
- DROP-OFF ZONES
- PARKING LOT ENTRYWAYS
- PRIMARY PEDESTRIAN CIRCULATION
- SECONDARY PEDESTRIAN CIRCULATION
- TERTIARY PEDESTRIAN CIRCULATION
- 1/4 MILE RADIUS (5 MIN WALK)





# FCI DATA

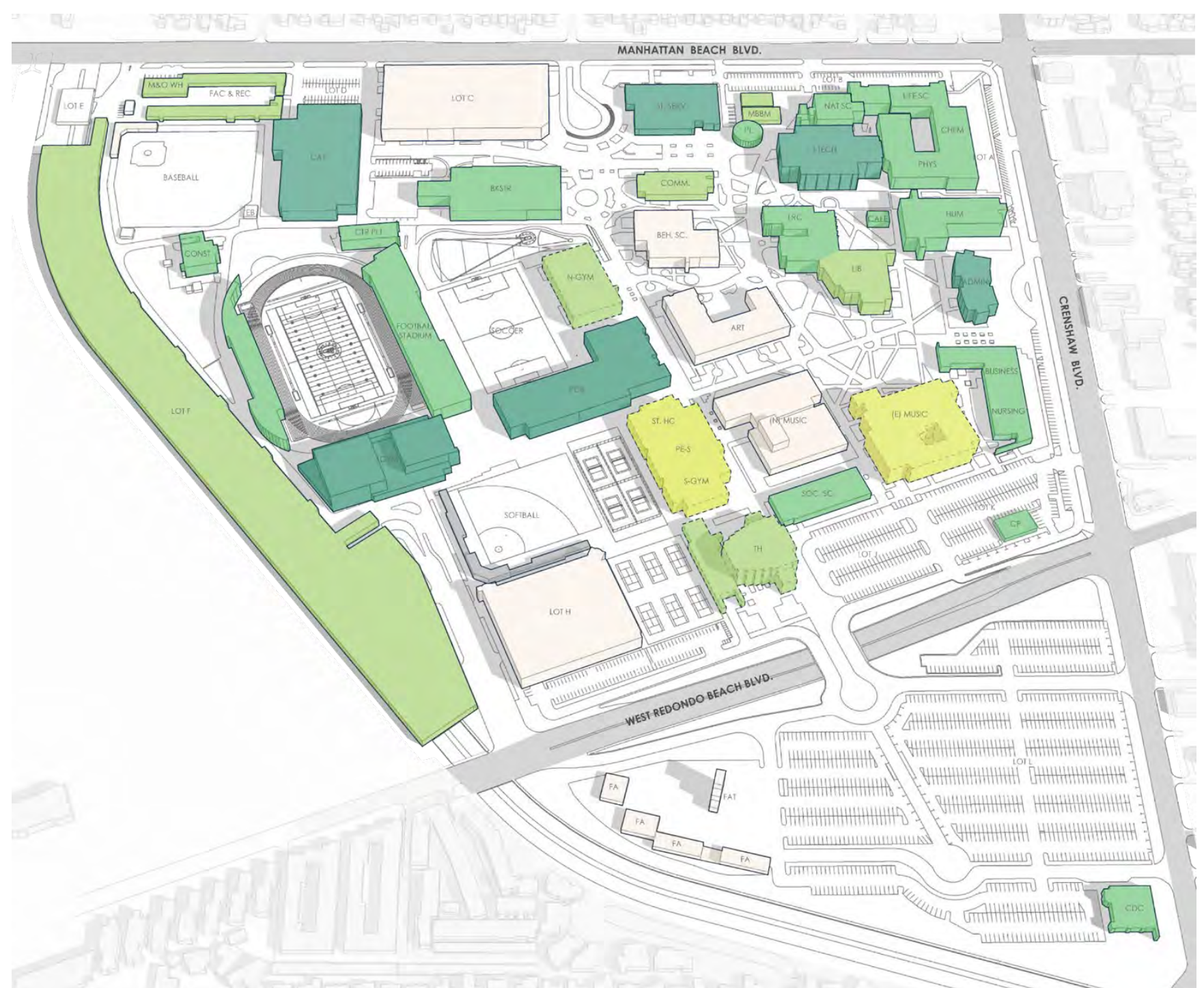
- Majority of buildings are less than 50% FCI
- Current Planned Demolition for >65%
- Core Facilities 50-65%
  - Sciences
  - Library
  - Bookstore
  - Communications Building
  - M&O
  - Marsee Theater





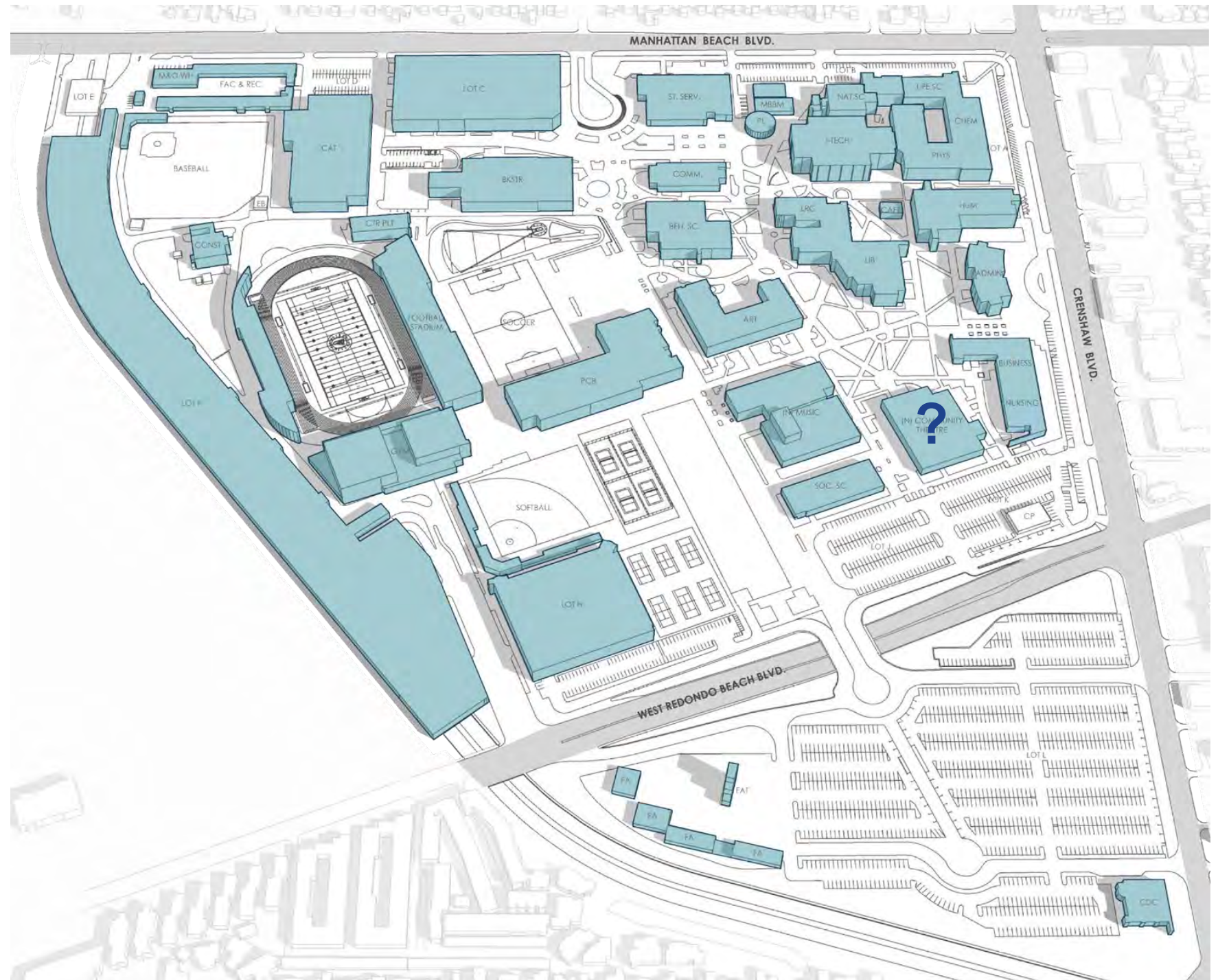
# FACILITIES ASSESSMENT

- Strong consistent collegial architectural character
- Consistent El Camino Brand





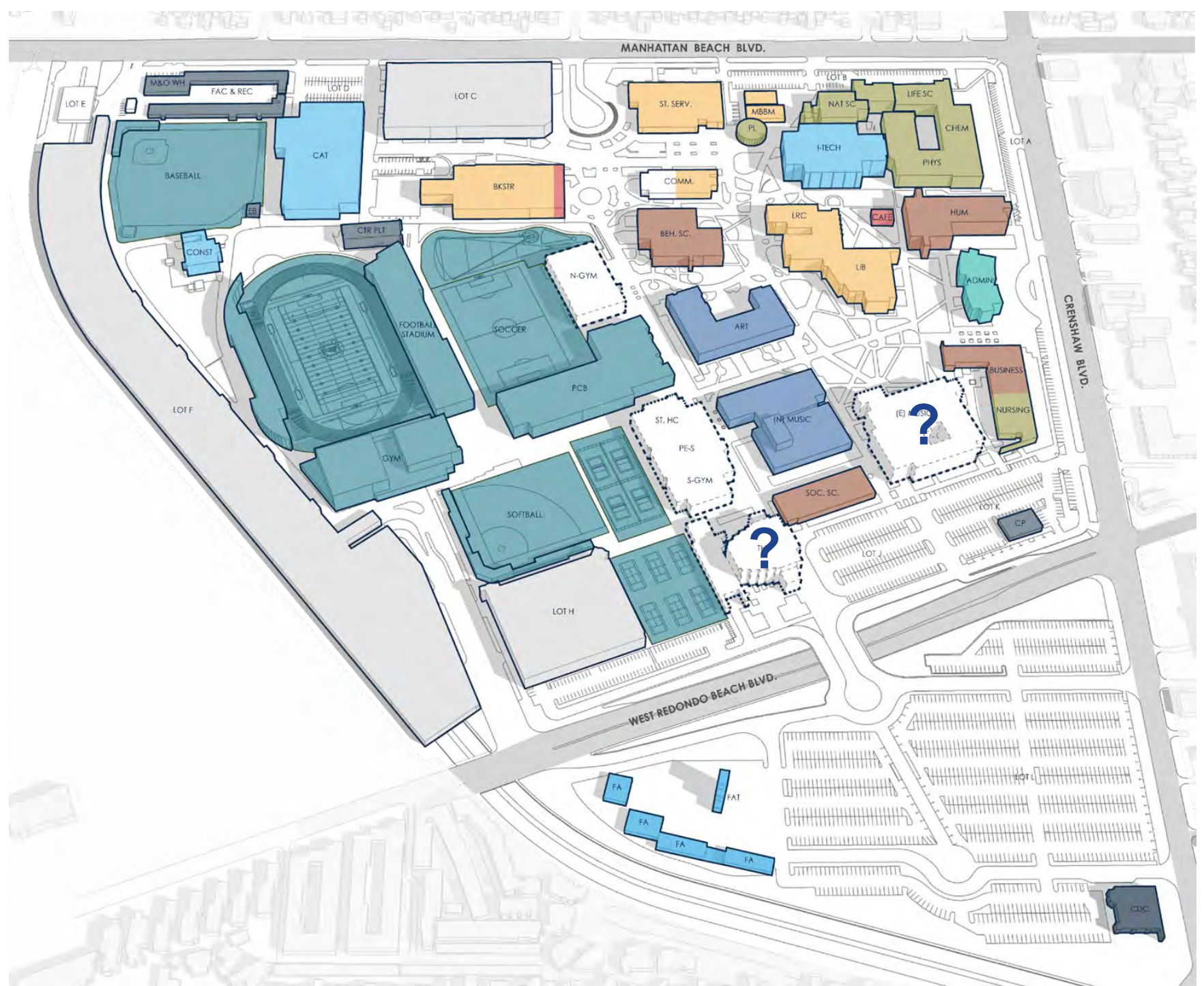
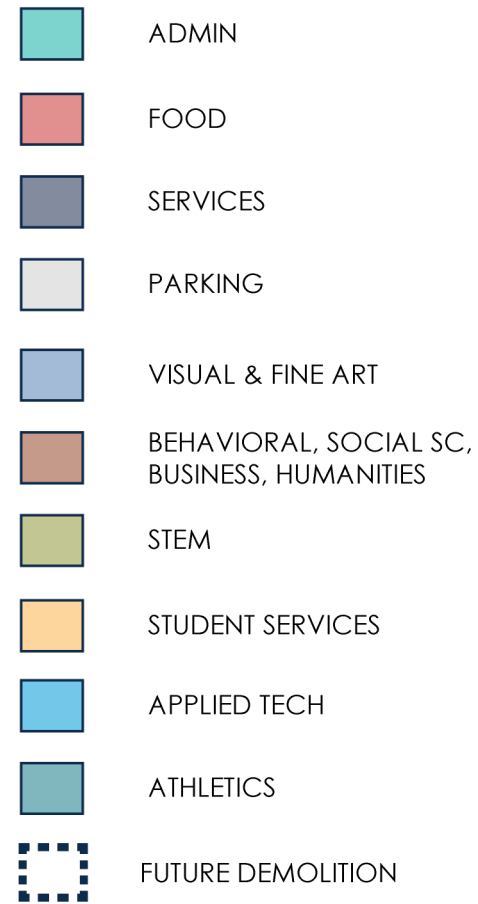
# CONFIRMING THE CURRENT MASTER PLAN





# ZONING

- Relatively defined zoning
- Limited Food Service



# AGENDA

1. SINCE WE LAST GOT TOGETHER
2. LINKING FACILITIES, INSTRUCTION, STUDENT SERVICES, TECHNOLOGY
3. MASTER PLANNING BEST PRACTICES
4. SWOT ANALYSIS
5. GUIDING PRINCIPLES AND OBJECTIVES
6. CAMPUS SURVEY
7. NEXT STEPS





# CONFIRMING THE PRIORITIES WITH COLLEGE STAKEHOLDERS

## PRIORITIES - FROM FACILITIES PLAN 2017

- Maximize functional space
  - Renovate facilities
  - Address program needs
- Eliminate non-functional space
  - Remove temporary buildings
  - Replace aging facilities
- Simplify implementation
  - Limit number of moves
  - Minimize need for swing space
- Improve efficiency/ utilization of facilities
  - Consolidate related programs
  - Create flexible, interdisciplinary space
- Right-size the campus to address program needs
  - Align the projects space inventory with state guidelines
  - Position ECC to maximize funding (state & local)

## NEW / ADDITIONAL PRIORITIES?

- Support student access, learning, & teaching
- Balance and support socialization and formal learning
- Maintain student safety
- Foster environmental responsibility



# AGENDA

1. SINCE WE LAST GOT TOGETHER
2. LINKING FACILITIES, INSTRUCTION, STUDENT SERVICES, TECHNOLOGY
3. MASTER PLANNING BEST PRACTICES
4. SWOT ANALYSIS
5. GUIDING PRINCIPLES AND OBJECTIVES
6. CAMPUS SURVEY
7. NEXT STEPS





# CAMPUS SURVEY

PARKING						
Please respond to the following questions based on current Campus Parking conditions						
1	The total number of on campus parking stalls is adequate.	Strongly Agree	Agree	Neutral	Disagree	Strongly Disagree
2	Parking is well / adequately distributed.	Strongly Agree	Agree	Neutral	Disagree	Strongly Disagree
3	The distance from parking to campus facilities is convenient.	Strongly Agree	Agree	Neutral	Disagree	Strongly Disagree
4	Vehicular circulation within parking lots is clear and safe.	Strongly Agree	Agree	Neutral	Disagree	Strongly Disagree
5	The existing parking areas are generally well lit, safe and secure.	Strongly Agree	Agree	Neutral	Disagree	Strongly Disagree
6	The existing parking areas are adequately landscaped.	Strongly Agree	Agree	Neutral	Disagree	Strongly Disagree
7	Existing passenger loading and drop-off zones are convenient and adequately distributed.	Strongly Agree	Agree	Neutral	Disagree	Strongly Disagree



# AGENDA

1. SINCE WE LAST GOT TOGETHER
2. LINKING FACILITIES, INSTRUCTION, STUDENT SERVICES, TECHNOLOGY
3. MASTER PLANNING BEST PRACTICES
4. SWOT ANALYSIS
5. GUIDING PRINCIPLES AND OBJECTIVES
6. CAMPUS SURVEY
7. NEXT STEPS

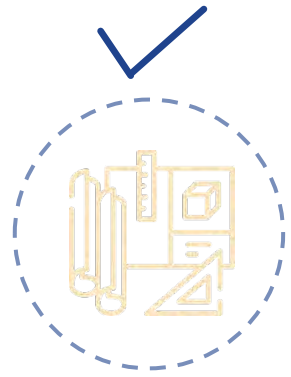




# NEXT STEPS



Tour Campus with  
Facilities  
Representative(s)



Assemble Drawing  
Documents to Create  
Baseline Drawings



Develop  
Surveys



Identify facilities  
needs and  
opportunities



Initiate stakeholder  
group  
engagement



Continue to  
analyze existing  
data



Looking for linkages:  
Instruction – Technology -  
Facilities



Synthesize  
findings for  
review



# NEXT STEPS

## 1. CAPACITY AND EDUCATIONAL INTENT + FACILITIES

- A. Campus redevelopment opportunities
- B. More “just-right” classrooms and laboratories
- C. Sit-study-relax areas to keep students on campus



Continue to  
analyze existing  
data



Looking for linkages:  
Instruction – Technology -  
Facilities



Synthesize  
findings for  
review



Identify facilities  
needs and  
opportunities



Initiate stakeholder  
group  
engagement



# SCHEDULE

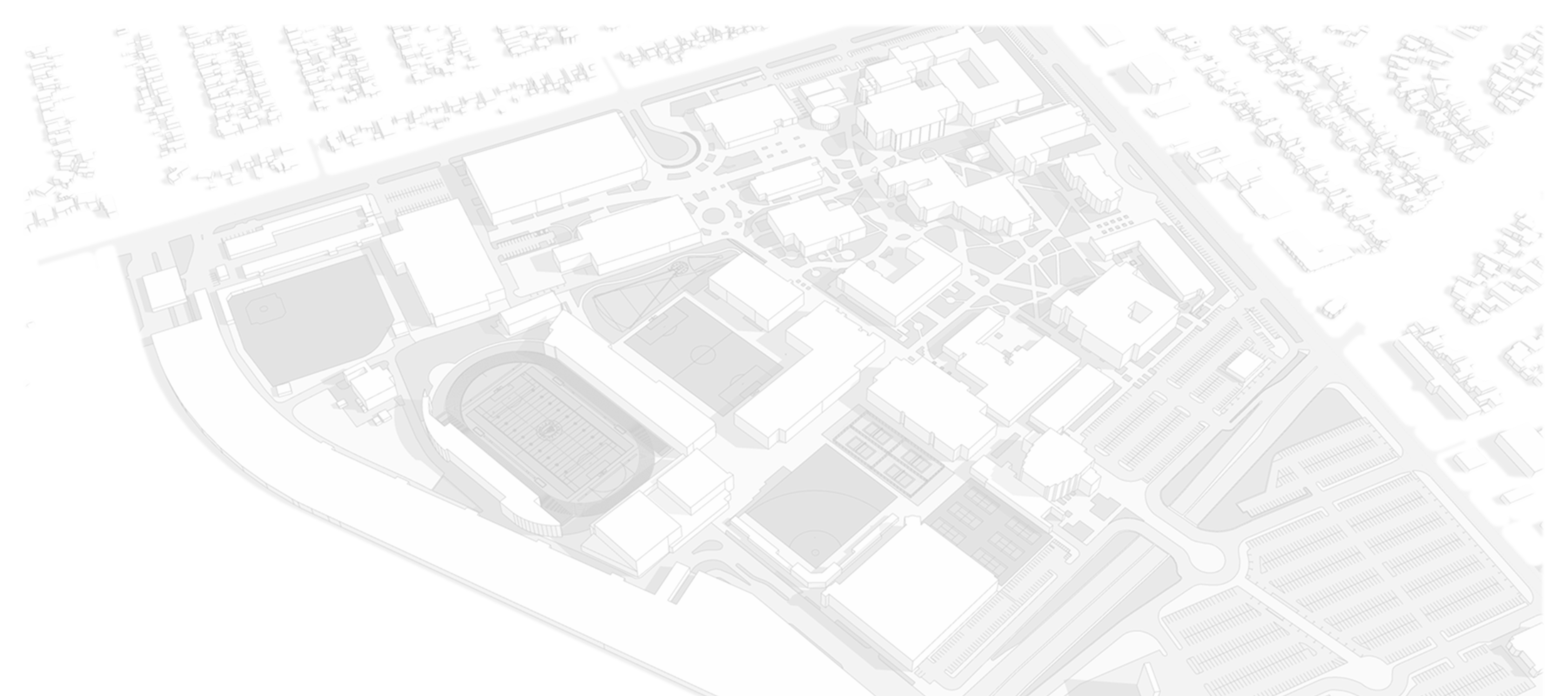
JUL	2021																								2022											
	JUN	JUL					AUG					SEP					OCT					NOV					DEC				JAN				FEB	
	28		5	12	19	26	2	9	16	23	30		6	13	20	27		4	11	18	25	1	8	15	22	29		6	13	20	27	3	10	17	24	
WEEK START: MONDAY																																				
	INITIATION: 1) Establish Schedule 2) Notify FMPU participants 3) Mine FUSION data 4) Information request					EVALUATION: 1. Develop campus map base 2. Review/analyze existing data 3. Trends/Practices Research 4. Engage stakeholders					ISSUES & OPTIONS: 1. ASF needs for 10 year horizon 2. Campus ReDevelopment Studies 2. Facility Replacement Studies 3. Facility Repurposing Studies 4. Synthesis					DEVELOPMENT: 1. Cost benefit analysis 2. ROM cost estimates 3. Potential partnerships 4. Infrastructure needs 5. Synthesis					REPORT: 1. First Draft Report 2. Review with Working Group 3. Present to College/Community Stakeholders 4. Second Draft Report 5. Final Report					APPROVAL: 1. Working Group 2. Participatory Governance Groups 3. President/Cabinet										
EL CAMINO COLLEGE DISTRICT		X		Independence Day						X	Labor Day										X	Thanksgiving					X	Winter Break								
COMMITTEE/GROUP																																				
Facilities Master Plan Update	6/28					7/28				8/25				9/22				10/27					12/1				12/22									
President's Cabinet						8/3							9/14				10/5			11/2					12/7			1/4								
Academic Senate																				11/2					12/7											
College Council														9/20						11/1					12/6											
Council of Deans						8/5							9/16							11/4					12/16											
Facilities Steering Committee							8/9									10/4								12/8												
Technology Committee								8/17					9/21				10/19			11/16																
Campus Technology Plan Workgroup					7/29																															
Planning and Budget (Zoom)						8/12							9/16				10/21			11/18																
Associated Students Organization																																				
Academic Divisions																																				
- Behavioral & Social Sciences																	10/7		11/3			12/2														
- Business																																				
- Fine Arts																	10/28																			
- Health Sciences and Athletics																																				
- Humanities												9/9				10/7																				
- Industry and Technology													9/23				10/21			11/18																
- Library and Learning Resources													9/15				10/20			11/17																
- Mathematical Sciences																10/7				11/11																
- Natural Sciences																																				
Surveys																																				
Focus Groups																																				
Town Halls																																				
Citizen's Oversight Committee (In Board of Trustees)					7/21																															
								8/16										10/18																		

TODAY

SURVEY FOCUS GROUPS

PROCESS | TIMELINE | MEETINGS  
FACILITIES MASTER PLAN **UPDATE** | 09.20.2021





# EL CAMINO COLLEGE

FACILITIES MASTER PLAN UPDATE | WORKING GROUP SESSION | 09.20.2021

